



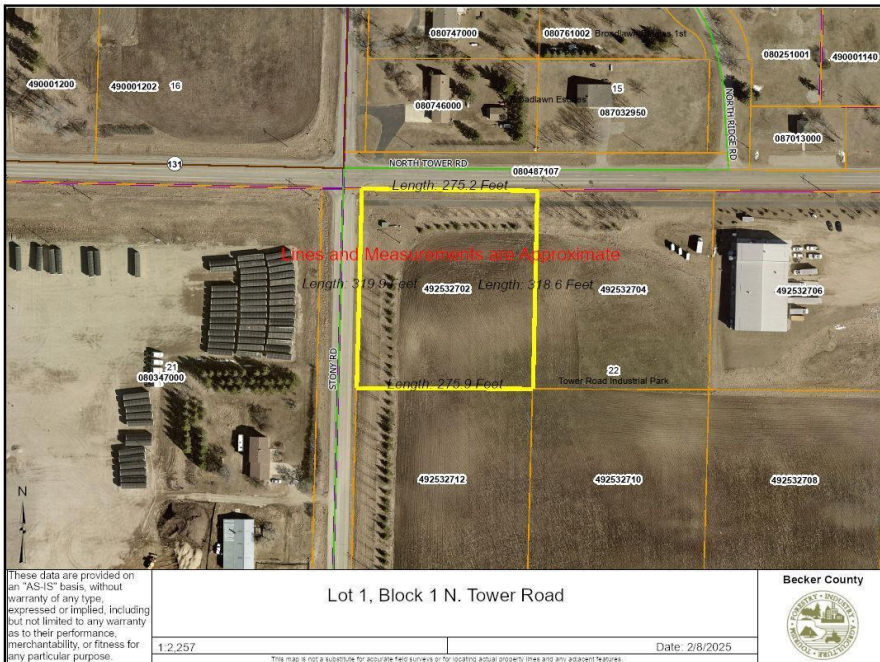
MLS 6659129 Land

\$66,000

2.01 Acres
Subdivided

TBD Tower Road
Detroit Lakes MN 56501

Status: Active



Description:

Calling all Contractors, Manufacturers, Processing plants, or any other business looking to expand or grow in an industrial setting. Affordable City of Detroit Lakes Industrial lots available in the N Tower Road Industrial Park and the North Industrial Park. Lot sizes range from 2-5 acres. Tax Increment financing may be available. Call today with questions or for more information!

Additional Details:

Lot Acres	2.01
Lot Dimensions	275x315
School District	22
Taxes	(unreported)
Taxes with Assessments	(unreported)
Tax Year	2025

Additional Features:

Driving Directions:

Located on the SE corner of N Tower Road and Stony Rd



Listed By:
The Real Estate Company of Detroit Lakes

Affinity Real Estate Inc. participates in the Regional Multiple Listing Service of Minnesota, Inc Broker Reciprocity (sm) program, allowing us to display other broker's listings on our website. All properties are subject to prior sale, change or withdrawal.



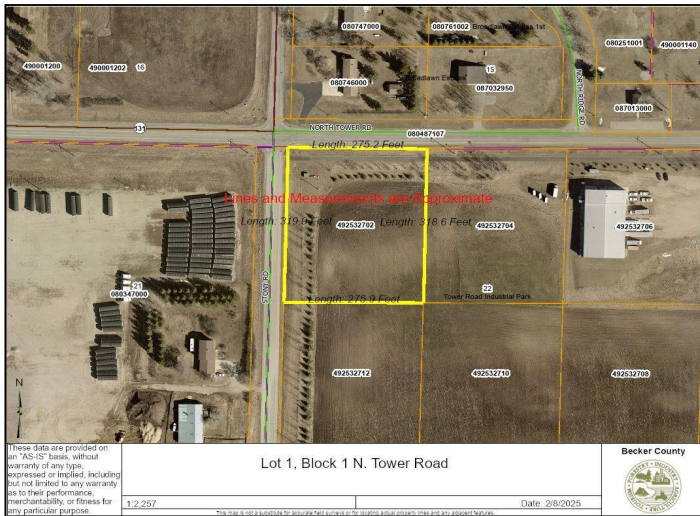
Call Affinity Real Estate

218-237-3333

info@affinityrealestate.com



Affinity Real Estate - 600 Park Avenue South - Park Rapids MN 56470



website: www.AffinityRealEstate.com | email: info@affinityrealestate.com | office: 218-237-3333 | fax: 218-237-3377



\$66,000
MLS 6659129 Land
TBD Tower Road
Detroit Lakes MN 56501