



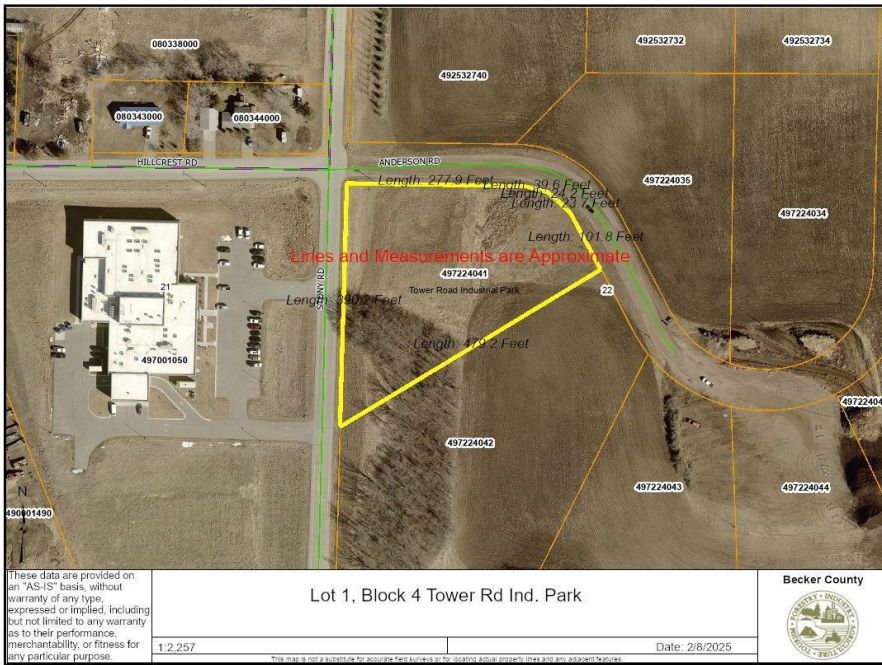
MLS 6659146 Land

**\$91,262**

2.27 Acres  
Subdivided

TBD Stony Road  
Detroit Lakes MN 56501

Status: Active



#### Description:

Calling all Contractors, Manufacturers, Processing plants, or any other business looking to expand or grow in an industrial setting. Affordable City of Detroit Lakes Industrial lots available in the N Tower Road Industrial Park and the North Industrial Park. Lot sizes range from 2-5 acres. Tax Increment financing may be available. Call today with questions or for more information!

#### Additional Details:

|                        |              |
|------------------------|--------------|
| Lot Acres              | 2.27         |
| Lot Dimensions         | Irregular    |
| School District        | 22           |
| Taxes                  | (unreported) |
| Taxes with Assessments | (unreported) |
| Tax Year               | 2025         |

#### Additional Features:

#### Driving Directions:

From N Tower Road in Detroit Lakes, Drive South on Stony Road to Lot on the south side of the corner of Stony Rd and Anderson Road



Listed By:  
The Real Estate Company of Detroit Lakes

Affinity Real Estate Inc. participates in the Regional Multiple Listing Service of Minnesota, Inc Broker Reciprocity (sm) program, allowing us to display other broker's listings on our website. All properties are subject to prior sale, change or withdrawal.



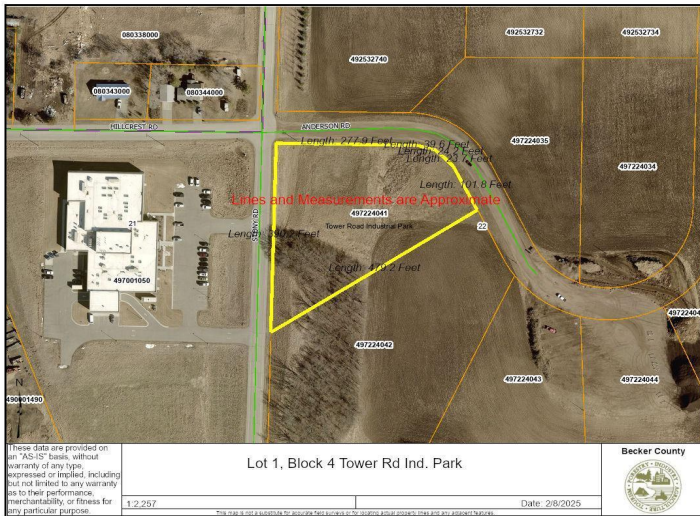
Call Affinity Real Estate

**218-237-3333**

[info@affinityrealestate.com](mailto:info@affinityrealestate.com)



Affinity Real Estate - 600 Park Avenue South - Park Rapids MN 56470



website: [www.AffinityRealEstate.com](http://www.AffinityRealEstate.com) | email: [info@affinityrealestate.com](mailto:info@affinityrealestate.com) | office: 218-237-3333 | fax:218-237-3377



**\$91,262**  
MLS 6659146 Land  
TBD Stony Road  
Detroit Lakes MN 56501