



MLS 6659328 Lake Home

**\$279,900**

1,600 sq ft  
3 bedrooms  
2 baths

25371 Washington Drive  
Osage MN 56570

Waterfront: Straight

Status: Active

**Description:**

This single level home features 3 bedrooms and 2 baths. Some updates include a new septic, updated bathrooms, and a fresh coat of paint throughout. Additionally it includes a spacious 47x28 pole building with concrete floor for great storage. The property is set on a beautifully treed lot and it is conveniently located just a short drive to a 30 foot shared access to Straight Lake.

**Additional Details:**

Year Built	1986
Lot Acres	0.92
Lot Dimensions	150x270
Garage Stalls	2
School District	309
Taxes	\$1,694
Taxes with Assessments	\$1,754
Tax Year	2024

**Additional Features:**

**Basement:** None **Fuel:** Electric **Garage:** 2 **Heat:** Baseboard, Radiant Floor **Sewer:** Private Sewer, Septic System Compliant - Yes **Water:** Private, Well **Air Conditioning:** Wall Unit(s)

**Driving Directions:**

West of Park Rapids on Highway 34, approximately 10 miles to Osage. Right on 26, 1/2 mile to Washington Drive. Right on Washington to sign on left.



Listed By:  
Wolff & Simon Real Estate

Affinity Real Estate Inc. participates in the Regional Multiple Listing Service of Minnesota, Inc Broker Reciprocity (sm) program, allowing us to display other broker's listings on our website. All properties are subject to prior sale, change or withdrawal.



**Call Affinity Real Estate**

**218-237-3333**

**info@affinityrealestate.com**



**Affinity Real Estate - 600 Park Avenue South - Park Rapids MN 56470**



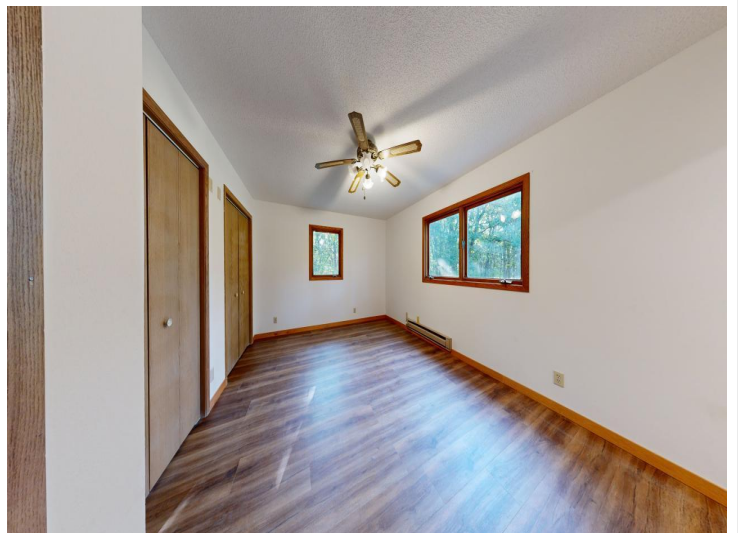


website: [www.AffinityRealEstate.com](http://www.AffinityRealEstate.com) | email: [info@affinityrealestate.com](mailto:info@affinityrealestate.com) | office: 218-237-3333 | fax: 218-237-3377

**Affinity**  
REAL ESTATE INC

**\$279,900**  
MLS 6659328 Lake Home  
25371 Washington Drive  
Osage MN 56570





website: [www.AffinityRealEstate.com](http://www.AffinityRealEstate.com) | email: [info@affinityrealestate.com](mailto:info@affinityrealestate.com) | office: 218-237-3333 | fax: 218-237-3377



**\$279,900**  
 MLS 6659328 Lake Home  
 25371 Washington Drive  
 Osage MN 56570





website: [www.AffinityRealEstate.com](http://www.AffinityRealEstate.com) | email: [info@affinityrealestate.com](mailto:info@affinityrealestate.com) | office: 218-237-3333 | fax: 218-237-3377



**\$279,900**  
 MLS 6659328 Lake Home  
 25371 Washington Drive  
 Osage MN 56570





website: [www.AffinityRealEstate.com](http://www.AffinityRealEstate.com) | email: [info@affinityrealestate.com](mailto:info@affinityrealestate.com) | office: 218-237-3333 | fax: 218-237-3377



**\$279,900**  
 MLS 6659328 Lake Home  
 25371 Washington Drive  
 Osage MN 56570