



MLS 6659670 Residential

\$285,000

1,550 sq ft
0 bedrooms
1 baths

28440 Grand Trailhead Drive
Akeley MN 56433

Status: Active

Description:

(description unavailable)

Additional Details:

Year Built	2024
Lot Acres	0.45
Lot Dimensions	150x129.29
Garage Stalls	5
School District	113
Taxes	\$550
Taxes with Assessments	\$550
Tax Year	2024

Additional Features:

Basement: Slab **Fuel:** Natural Gas **Garage:** 5 **Heat:** Radiant Floor, Other **Sewer:** Septic System Compliant - Yes, Shared Septic **Water:** Shared System, Well **Air Conditioning:** Ductless Mini-Split

Driving Directions:



Listed By:
REALTY XPERTS

Affinity Real Estate Inc. participates in the Regional Multiple Listing Service of Minnesota, Inc Broker Reciprocity (sm) program, allowing us to display other broker's listings on our website. All properties are subject to prior sale, change or withdrawal.



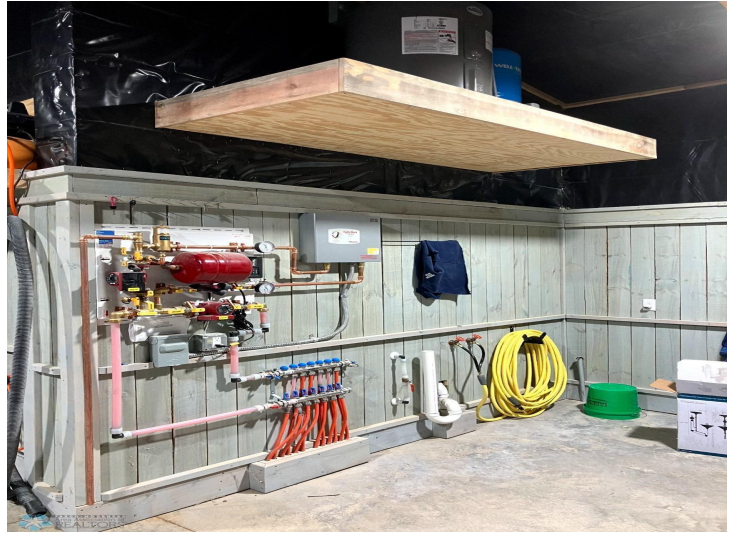
Call Affinity Real Estate

218-237-3333

info@affinityrealestate.com



Affinity Real Estate - 600 Park Avenue South - Park Rapids MN 56470



website: www.AffinityRealEstate.com | email: info@affinityrealestate.com | office: 218-237-3333 | fax:218-237-3377

Affinity
REAL ESTATE INC

\$285,000
MLS 6659670 Residential
28440 Grand Trailhead Drive
Akeley MN 56433



website: www.AffinityRealEstate.com | email: info@affinityrealestate.com | office: 218-237-3333 | fax:218-237-3377



\$285,000
MLS 6659670 Residential
28440 Grand Trailhead Drive
Akeley MN 56433



website: www.AffinityRealEstate.com | email: info@affinityrealestate.com | office: 218-237-3333 | fax:218-237-3377



\$285,000
MLS 6659670 Residential
28440 Grand Trailhead Drive
Akeley MN 56433