



MLS 6659817 Lake Home

\$949,900

4,970 sq ft
5 bedrooms
4 baths

5620 Kotten Trail
Brainerd MN 56401

Waterfront: Camp

Status: Closed

Description:

Discover a fully furnished lakeside retreat on Camp Lake with 241 feet of private shoreline. Camp Lake is 519 acres with a max depth of 42 feet for boating, fishing, and recreation, with a minimal, optional, lake association fee for summer activities and lake maintenance. This lake also has a rich indigenous history with wild rice surrounding the lake shoreline still being harvested annually from mid August through late September. This custom chalet-style log home offers nearly 5,000 sq. ft. of meticulously designed living space, blending rustic charm with modern convenience to create "Up-North Luxury". A full wall of windows in the great room provides stunning lake views, complemented by a soaring stone fireplace and beautiful wood floors. The loft-level primary suite overlooks this space, featuring a gas fireplace, skylights, a walk-in closet, and a spa-like bath with a jetted tub and custom double vanity. The main floor includes a chef's kitchen with hickory cabinets, granite counter tops, a farmhouse sink, along with a dedicated office/bedroom featuring glass doors and custom woodwork. The walk-out lower level is built for entertaining, complete with an antique bar sourced from Detroit Lakes, and easy access to the expansive patio and outdoor shower. A guest suite above the heated garage provides a private living space, full kitchen, bedroom, bath, and a two-person Jacuzzi tub. Please read on to see the many additional features offered in this home. A rare opportunity for a custom built and meticulously maintained luxury lake home.



Additional Details:

Year Built	2007
Lot Acres	1.78
Lot Dimensions	478x228x263x235
Garage Stalls	3
School District	181
Taxes	\$4,752
Taxes with Assessments	\$4,752
Tax Year	2025

Additional Features:

Fuel: Propane, Wood **Heat:** Forced Air, Fireplace(s), Radiant Floor, Wood Stove

Driving Directions:

 Listed By:  Road to Camp Lake Drive - Follow to Y stay right and go straight through private road sign to property. (If using GPS use address 5609 Camp Lake Drive, Brainerd.) Affinity Real Estate Inc. participates in the Regional Multiple Listing Service of Minnesota, Inc Broker Reciprocity (sm) program, allowing us to display other broker's listings on our website. All properties are subject to prior sale, change or withdrawal.



Call Affinity Real Estate

218-237-3333

info@affinityrealestate.com



Affinity Real Estate - 600 Park Avenue South - Park Rapids MN 56470



website: www.AffinityRealEstate.com | email: info@affinityrealestate.com | office: 218-237-3333 | fax: 218-237-3377



\$949,900

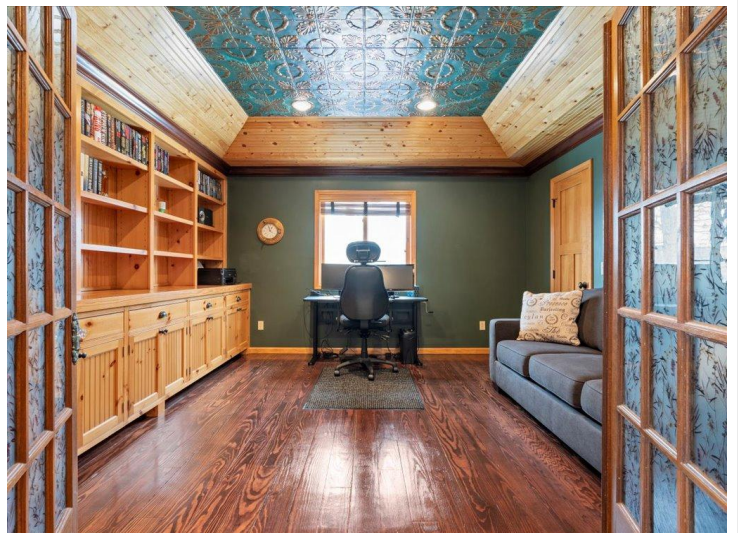
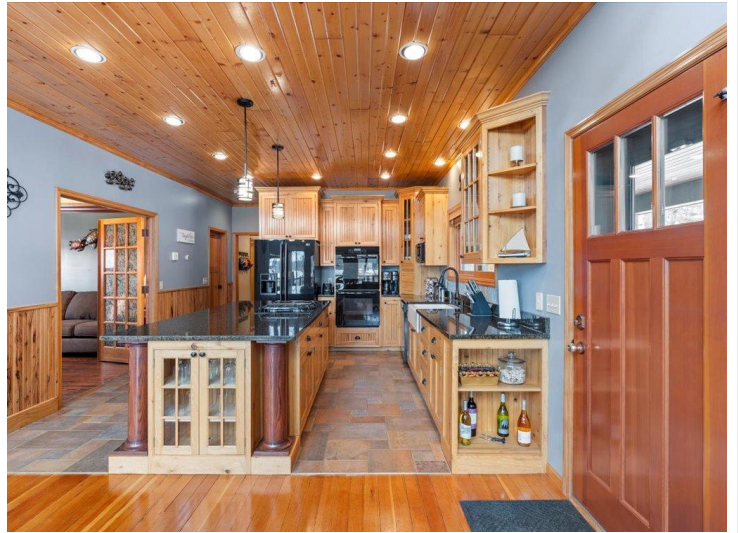
MLS 6659817 Lake Home
5620 Kotten Trail
Brainerd MN 56401



website: www.AffinityRealEstate.com | email: info@affinityrealestate.com | office: 218-237-3333 | fax: 218-237-3377

Affinity
REAL ESTATE INC

\$949,900
MLS 6659817 Lake Home
5620 Kotten Trail
Brainerd MN 56401



website: www.AffinityRealEstate.com | email: info@affinityrealestate.com | office: 218-237-3333 | fax: 218-237-3377

Affinity
REAL ESTATE INC

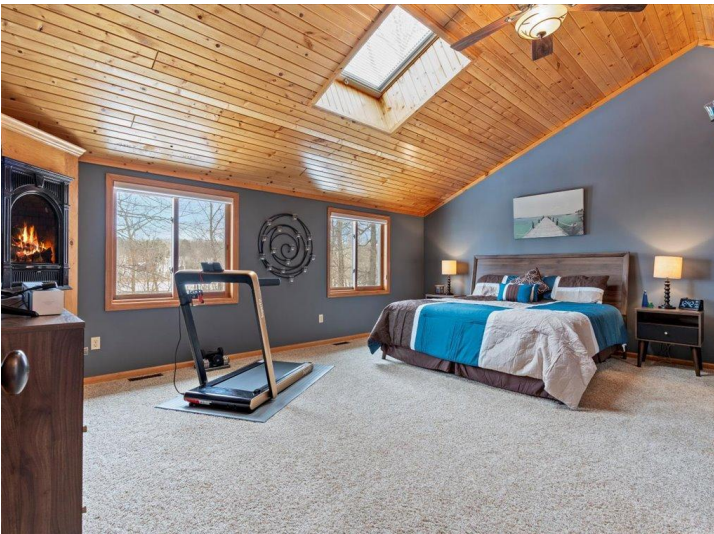
\$949,900
MLS 6659817 Lake Home
5620 Kotten Trail
Brainerd MN 56401



website: www.AffinityRealEstate.com | email: info@affinityrealestate.com | office: 218-237-3333 | fax: 218-237-3377

Affinity
REAL ESTATE INC

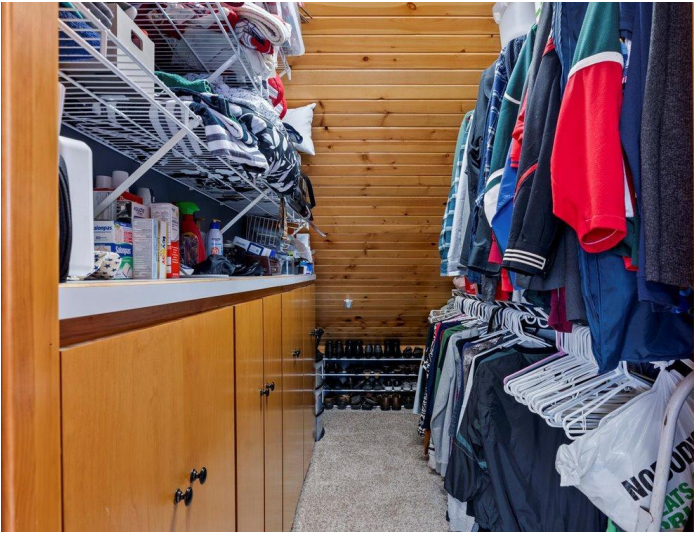
\$949,900
MLS 6659817 Lake Home
5620 Kotten Trail
Brainerd MN 56401



website: www.AffinityRealEstate.com | email: info@affinityrealestate.com | office: 218-237-3333 | fax: 218-237-3377



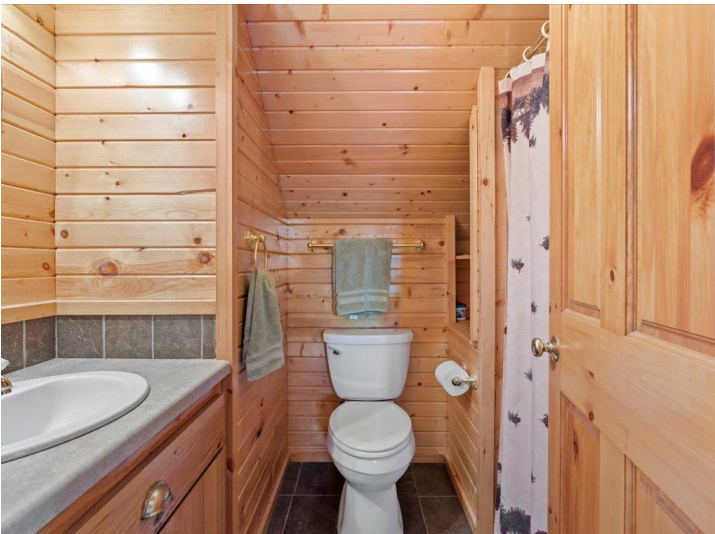
\$949,900
 MLS 6659817 Lake Home
 5620 Kotten Trail
 Brainerd MN 56401



website: www.AffinityRealEstate.com | email: info@affinityrealestate.com | office: 218-237-3333 | fax: 218-237-3377

Affinity
REAL ESTATE INC

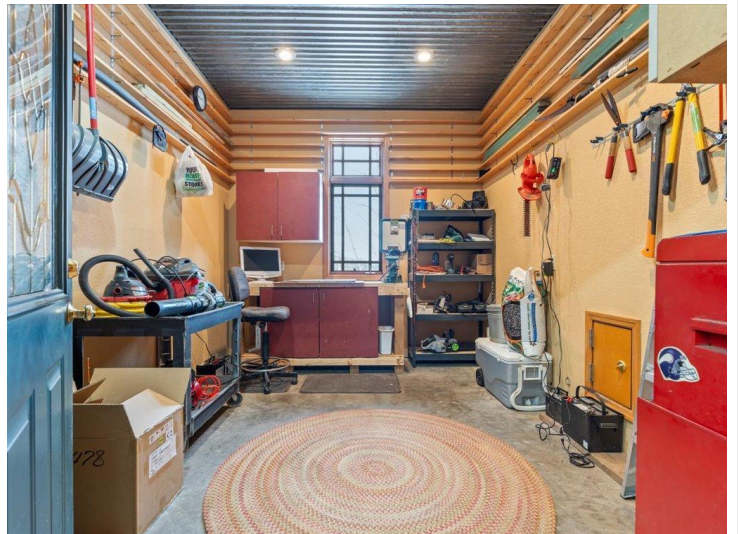
\$949,900
MLS 6659817 Lake Home
5620 Kotten Trail
Brainerd MN 56401



website: www.AffinityRealEstate.com | email: info@affinityrealestate.com | office: 218-237-3333 | fax: 218-237-3377

Affinity
REAL ESTATE INC

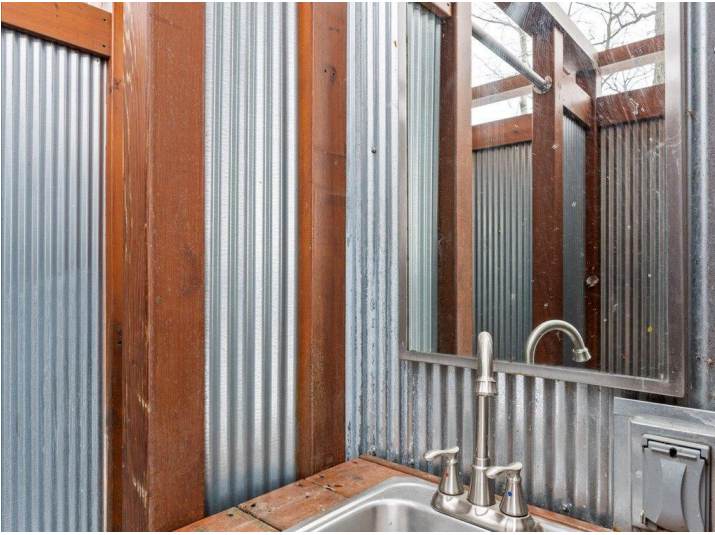
\$949,900
MLS 6659817 Lake Home
5620 Kotten Trail
Brainerd MN 56401



website: www.AffinityRealEstate.com | email: info@affinityrealestate.com | office: 218-237-3333 | fax: 218-237-3377

Affinity
REAL ESTATE INC

\$949,900
MLS 6659817 Lake Home
5620 Kotten Trail
Brainerd MN 56401



website: www.AffinityRealEstate.com | email: info@affinityrealestate.com | office: 218-237-3333 | fax: 218-237-3377

Affinity
REAL ESTATE INC

\$949,900
MLS 6659817 Lake Home
5620 Kotten Trail
Brainerd MN 56401



website: www.AffinityRealEstate.com | email: info@affinityrealestate.com | office: 218-237-3333 | fax: 218-237-3377



\$949,900
 MLS 6659817 Lake Home
 5620 Kotten Trail
 Brainerd MN 56401



website: www.AffinityRealEstate.com | email: info@affinityrealestate.com | office: 218-237-3333 | fax: 218-237-3377



\$949,900
MLS 6659817 Lake Home
5620 Kotten Trail
Brainerd MN 56401

website: www.AffinityRealEstate.com | email: info@affinityrealestate.com | office: 218-237-3333 | fax:218-237-3377



\$949,900

MLS 6659817 Lake Home
5620 Kotten Trail
Brainerd MN 56401