



MLS 6670020 Lake Land

**\$239,000**

**Description:**

Prime 20+ acre Little Mantrap Lakeshore Lot – B Perfect Blend of Privacy and Accessibility This beautiful 20+ acre lot offers the perfect balance of seclusion and convenience. Survey is completed and survey pins mark the lot. Recently accessed by a newly installed road, the property is easily reachable while maintaining its peaceful, private atmosphere. Electricity is already available to the lot, making it a hassle-free option for building your dream lake home or cabin. One of the standout features of this property is its unique connection to thousands of acres of State of Minnesota land, providing an expansive natural landscape right at your doorstep. Whether you're looking to fish, hunt, hike, or simply enjoy the serene outdoors, this lot offers unlimited access to pristine nature. In addition to its peaceful setting, the property is just a short drive from local amenities, ensuring that you never feel too far from the essentials. Whether it's shopping, dining, or entertainment, everything you need is within easy reach. If you're looking for a place to escape the hustle and bustle, yet remain close enough to enjoy the conveniences of everyday life, this lot is an exceptional opportunity. Gorgeous, quiet, and full of potential – come see it for yourself! More lots available.

**Additional Details:**

Lot Acres	20
Lot Dimensions	344x1430x792x1890
School District	309
Taxes	(unreported)
Taxes with Assessments	(unreported)
Tax Year	2024

**Additional Features:**

**Driving Directions:**

From US Hwy 71, go West on County 46 for 2 miles, turn North onto Brietbach Road & go one mile. Take right hand fork. Follow arrow signs.



Listed By:  
Your Home Sold Guaranteed Realty Exclusive

Affinity Real Estate Inc. participates in the Regional Multiple Listing Service of Minnesota, Inc Broker Reciprocity (sm) program, allowing us to display other broker's listings on our website. All properties are subject to prior sale, change or withdrawal.



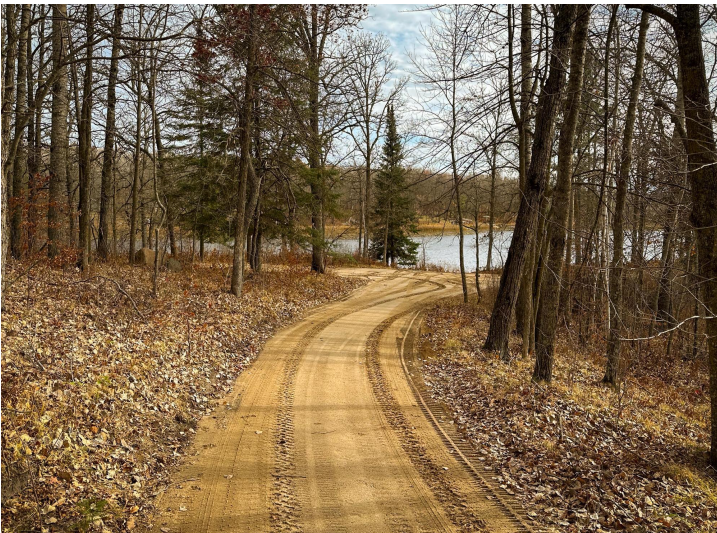
**Call Affinity Real Estate**

**218-237-3333**

**info@affinityrealestate.com**



**Affinity Real Estate - 600 Park Avenue South - Park Rapids MN 56470**



website: [www.AffinityRealEstate.com](http://www.AffinityRealEstate.com) | email: [info@affinityrealestate.com](mailto:info@affinityrealestate.com) | office: 218-237-3333 | fax:218-237-3377



**\$239,000**  
MLS 6670020 Lake Land  
Tract B Brietbach Road  
Park Rapids MN 56470



website: [www.AffinityRealEstate.com](http://www.AffinityRealEstate.com) | email: [info@affinityrealestate.com](mailto:info@affinityrealestate.com) | office: 218-237-3333 | fax:218-237-3377

**Affinity**  
REAL ESTATE INC

**\$239,000**  
MLS 6670020 Lake Land  
Tract B Brietbach Road  
Park Rapids MN 56470



website: [www.AffinityRealEstate.com](http://www.AffinityRealEstate.com) | email: [info@affinityrealestate.com](mailto:info@affinityrealestate.com) | office: 218-237-3333 | fax:218-237-3377



**\$239,000**  
MLS 6670020 Lake Land  
Tract B Brietbach Road  
Park Rapids MN 56470



website: [www.AffinityRealEstate.com](http://www.AffinityRealEstate.com) | email: [info@affinityrealestate.com](mailto:info@affinityrealestate.com) | office: 218-237-3333 | fax:218-237-3377



**\$239,000**  
MLS 6670020 Lake Land  
Tract B Brietbach Road  
Park Rapids MN 56470



website: [www.AffinityRealEstate.com](http://www.AffinityRealEstate.com) | email: [info@affinityrealestate.com](mailto:info@affinityrealestate.com) | office: 218-237-3333 | fax:218-237-3377



**\$239,000**  
MLS 6670020 Lake Land  
Tract B Brietbach Road  
Park Rapids MN 56470