



MLS 6670155 Residential

\$425,000

4,720 sq ft
4 bedrooms
5 baths

420 Wisconsin Avenue
Staples MN 56479

Status: Active

Description:

Welcome home to this 4 bedroom, 4 bathroom home with a spacious floor plan and inviting interior! The foyer entry offers a spiral staircase leading to the upper level with 3 bedrooms including primary suite with private bathroom; additional full bathroom and a private mother-in-law suite with separate kitchen/dining, living room, bedroom, extra front room, washer/dryer, private deck and stairway. Home features include: hardwood flooring; light-filled formal dining room and front room; office; 3 car attached garage; garden shed; lower level with 5th bedroom (needs egress), full bathroom and extra living space; large kitchen/living room leading to the back porch with sitting area overlooking backyard. The fully fenced and spacious backyard is perfect for kids to play. The welcoming wrap around deck provides additional outdoor space for dining, socializing or relaxing! This property is located close to parks, schools and town amenities.

Additional Details:

Year Built	2005
Lot Acres	0.48
Lot Dimensions	140x150x140x150
Garage Stalls	3
School District	2170
Taxes	\$6,972
Taxes with Assessments	\$6,972
Tax Year	2024

Additional Features:

Basement: Block, Partially Finished **Fuel:** Natural Gas **Garage:** 3 **Heat:** Forced Air **Sewer:** City Sewer/Connected **Water:** City Water/Connected **Air Conditioning:** Central Air

Driving Directions:

Hwy 210 South of Staples; Right on Wisconsin Avenue to property on Left.



Listed By:
Edina Realty, Inc.

Affinity Real Estate Inc. participates in the Regional Multiple Listing Service of Minnesota, Inc Broker Reciprocity (sm) program, allowing us to display other broker's listings on our website. All properties are subject to prior sale, change or withdrawal.



Call Affinity Real Estate

218-237-3333

info@affinityrealestate.com



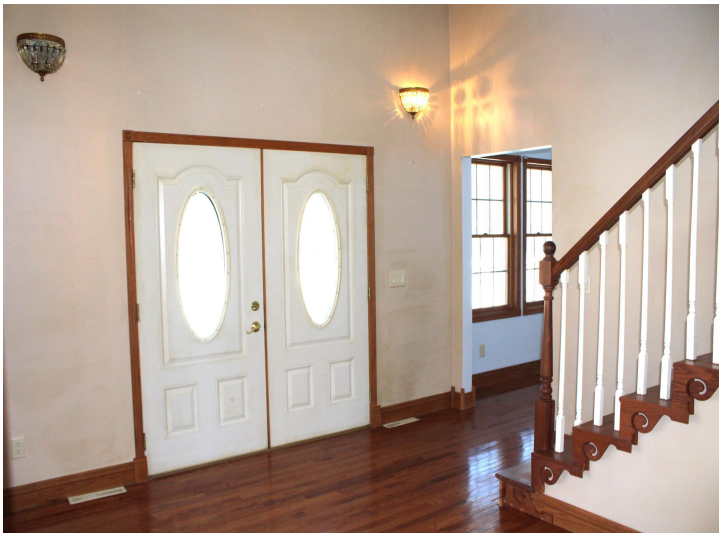
Affinity Real Estate - 600 Park Avenue South - Park Rapids MN 56470



website: www.AffinityRealEstate.com | email: info@affinityrealestate.com | office: 218-237-3333 | fax: 218-237-3377

Affinity
REAL ESTATE INC

\$425,000
MLS 6670155 Residential
420 Wisconsin Avenue
Staples MN 56479



website: www.AffinityRealEstate.com | email: info@affinityrealestate.com | office: 218-237-3333 | fax:218-237-3377

Affinity
REAL ESTATE INC

\$425,000
MLS 6670155 Residential
420 Wisconsin Avenue
Staples MN 56479



website: www.AffinityRealEstate.com | email: info@affinityrealestate.com | office: 218-237-3333 | fax:218-237-3377

Affinity
REAL ESTATE INC

\$425,000
MLS 6670155 Residential
420 Wisconsin Avenue
Staples MN 56479



website: www.AffinityRealEstate.com | email: info@affinityrealestate.com | office: 218-237-3333 | fax:218-237-3377

Affinity
REAL ESTATE INC

\$425,000
MLS 6670155 Residential
420 Wisconsin Avenue
Staples MN 56479



website: www.AffinityRealEstate.com | email: info@affinityrealestate.com | office: 218-237-3333 | fax:218-237-3377



\$425,000
MLS 6670155 Residential
420 Wisconsin Avenue
Staples MN 56479



website: www.AffinityRealEstate.com | email: info@affinityrealestate.com | office: 218-237-3333 | fax:218-237-3377



\$425,000
MLS 6670155 Residential
420 Wisconsin Avenue
Staples MN 56479



website: www.AffinityRealEstate.com | email: info@affinityrealestate.com | office: 218-237-3333 | fax:218-237-3377



\$425,000
MLS 6670155 Residential
420 Wisconsin Avenue
Staples MN 56479



website: www.AffinityRealEstate.com | email: info@affinityrealestate.com | office: 218-237-3333 | fax:218-237-3377



\$425,000
MLS 6670155 Residential
420 Wisconsin Avenue
Staples MN 56479