



MLS 6670241 Lake Home

**\$439,000**

1,092 sq ft  
3 bedrooms  
2 baths

26535 Highway 371  
Nisswa MN 56468

Waterfront: Edna

Status: Active

#### Description:

Nestled under the pines on Edna Lake, this 3-bedroom 2-bath lake home shares 530 feet of gradual elevation to the lake. This property, known as Unit 5 in the Lake Edna Villas Association, provides the privacy you've been seeking, stunning year-round sunset views, an excellent sandy beach, and your very own dock and lift. The beautifully finished interior features one-level living with an open floor plan, a vaulted knotty pine ceiling, and a lakeside living room complete with a brick gas-burning fireplace that showcases breathtaking lake views. Recent updates include a new mini-split system, a tankless water heater, a new roof, a paver patio, a walkway to the villas, upgraded windows, and a cement apron leading to their 1-stall garage that is part of the shared association garage. The Lake Edna Villas Association fee is \$125 per month, which covers lawn care, sanitation, and snow removal, allowing you to simply arrive and enjoy lake life! The association has also updated the roof and siding on the shared garage and pump house. You will love being just minutes away from all the amenities in Nisswa, which include championship golf courses, great restaurants, entertainment options, various retail shops, and across the road is the Paul Bunyan Trail for hiking, biking, and snowmobiling. There are also many other Brainerd Lakes area attractions. Begin making cherished family memories right here on Edna Lake.

#### Additional Details:

Year Built	1976
Lot Acres	0.13
Lot Dimensions	41x75x43x41x38x133x33
Garage Stalls	1
School District	181
Taxes	\$2,759
Taxes with Assessments	\$2,784
Tax Year	2025

#### Additional Features:

**Fuel:** Natural Gas **Heat:** Ductless Mini-Split, Forced Air, Fireplace(s)

#### Driving Directions:

Heading North from the stoplights in Nisswa, intersection of MN 371 N and County Rd 18, go North for 1.8 miles, Heading South from the bridge in Perquot Lakes, which is the intersection of MN 371 N and County Rd 18, go South for 1.8 miles, onto Villa View Dr, & U



Villa View Dr  
Larson Group Real Estate/Kelle

Affinity Real Estate Inc. participates in the Regional Multiple Listing Service of Minnesota, Inc Broker Reciprocity (sm) program, allowing us to display other broker's listings on our website. All properties are subject to prior sale, change or withdrawal.



Call Affinity Real Estate

**218-237-3333**

[info@affinityrealestate.com](mailto:info@affinityrealestate.com)



Affinity Real Estate - 600 Park Avenue South - Park Rapids MN 56470





website: [www.AffinityRealEstate.com](http://www.AffinityRealEstate.com) | email: [info@affinityrealestate.com](mailto:info@affinityrealestate.com) | office: 218-237-3333 | fax: 218-237-3377

**Affinity**  
REAL ESTATE INC

**\$439,000**  
MLS 6670241 Lake Home  
26535 Highway 371  
Nisswa MN 56468



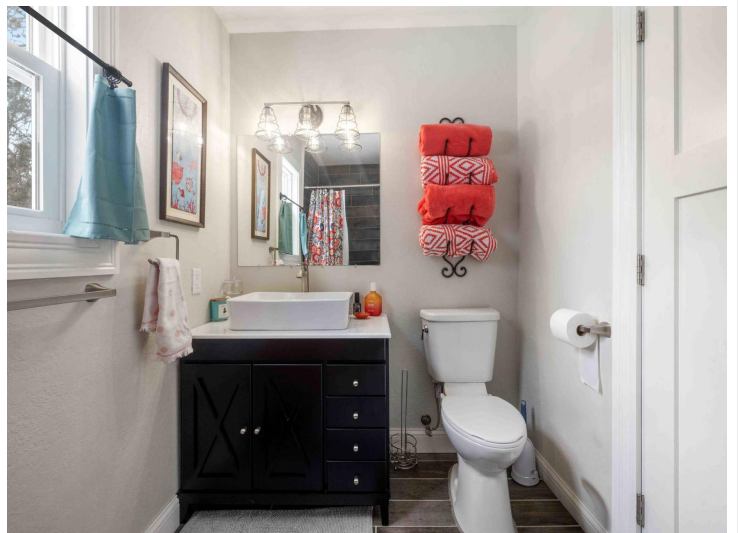
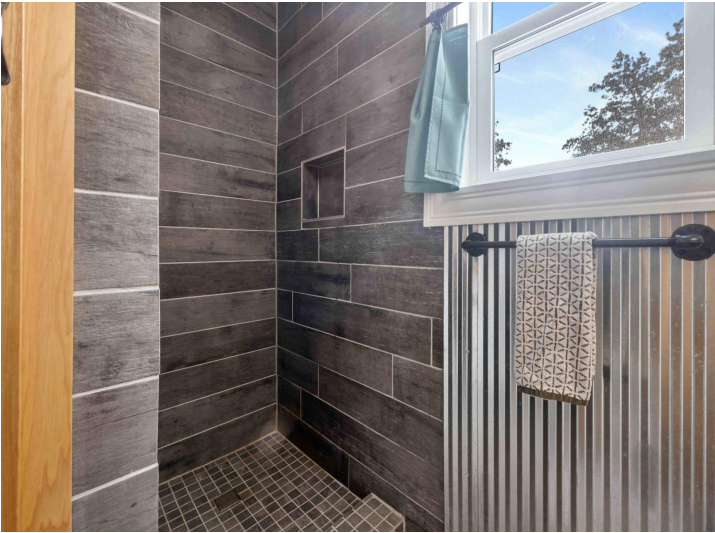


website: [www.AffinityRealEstate.com](http://www.AffinityRealEstate.com) | email: [info@affinityrealestate.com](mailto:info@affinityrealestate.com) | office: 218-237-3333 | fax: 218-237-3377

**Affinity**  
REAL ESTATE INC

**\$439,000**  
MLS 6670241 Lake Home  
26535 Highway 371  
Nisswa MN 56468





website: [www.AffinityRealEstate.com](http://www.AffinityRealEstate.com) | email: [info@affinityrealestate.com](mailto:info@affinityrealestate.com) | office: 218-237-3333 | fax: 218-237-3377



**\$439,000**  
 MLS 6670241 Lake Home  
 26535 Highway 371  
 Nisswa MN 56468



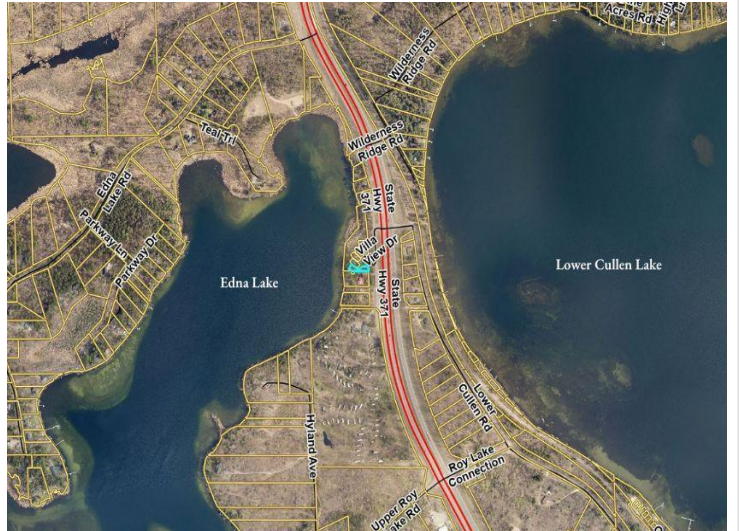


website: [www.AffinityRealEstate.com](http://www.AffinityRealEstate.com) | email: [info@affinityrealestate.com](mailto:info@affinityrealestate.com) | office: 218-237-3333 | fax: 218-237-3377



**\$439,000**  
 MLS 6670241 Lake Home  
 26535 Highway 371  
 Nisswa MN 56468





website: [www.AffinityRealEstate.com](http://www.AffinityRealEstate.com) | email: [info@affinityrealestate.com](mailto:info@affinityrealestate.com) | office: 218-237-3333 | fax: 218-237-3377



**\$439,000**  
 MLS 6670241 Lake Home  
 26535 Highway 371  
 Nisswa MN 56468