



MLS 6670254 Residential

\$204,900

936 sq ft
2 bedrooms
1 baths

6582 Mayflower Road
Bemidji MN 56601

Status: Pending

Description:

Welcome to your dream home! This stunning newly constructed residence is designed with modern aesthetics and sits on a generous 2.24-acre lot, complete with beautiful woodlands and a charming small pond. Enjoy single-level living in this thoughtfully designed layout featuring 2 bedrooms and 1 bathroom, along with high-end finishes such as in-floor heating, solid core doors, LP SmartSide siding, and Marvin Windows.

The open-concept living area seamlessly connects the spacious kitchen with a center island, perfect for gatherings and comfortable seating for up to four. You'll also appreciate the convenience of a large walk-in pantry for all your storage needs.

Located in a peaceful new development just a few miles from Bemidji, this home offers a tranquil retreat while still being close to amenities. Enjoy the opportunity to customize your living space with a variety of color options for cabinets, paint, flooring, doors, and siding.


Additionally, both attached and detached garage packages are available upon request. Don't miss your chance to claim this exceptional home as your own! Be sure to inquire about Down Payment Assistance options as well.

Additional Details:

Year Built	2025
Lot Acres	2.24
Lot Dimensions	245x438
School District	31
Taxes	(unreported)
Taxes with Assessments	(unreported)
Tax Year	2024

Additional Features:

Basement: None **Fuel:** Propane **Heat:** Boiler, Heat Pump, Radiant Floor **Sewer:** Septic System Compliant - Yes **Water:** Submersible - 4 Inch **Air Conditioning:** Heat Pump

 Listed By:
Lakeland Woods Realty
6582 Mayflower Road, Bemidji, MN 56601 (approximately 2 miles. Left on Mayflower Rd, Property on Left.)

Affinity Real Estate Inc. participates in the Regional Multiple Listing Service of Minnesota, Inc Broker Reciprocity (sm) program, allowing us to display other broker's listings on our website. All properties are subject to prior sale, change or withdrawal.



Call Affinity Real Estate

218-237-3333

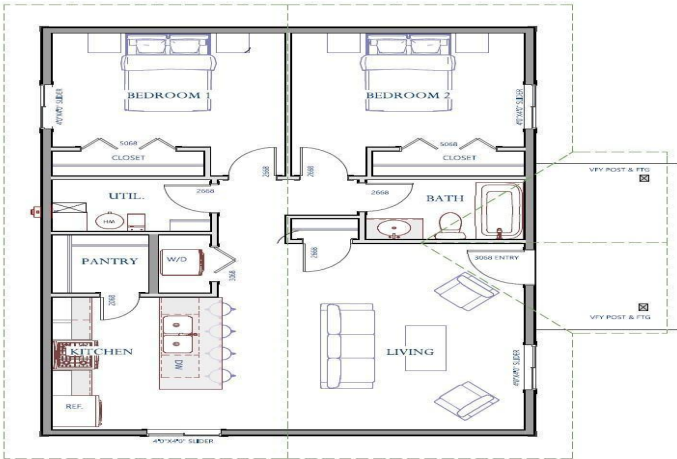
info@affinityrealestate.com



Affinity Real Estate - 600 Park Avenue South - Park Rapids MN 56470



120102500 6582 MAYFLOWER RD, BEMIDJI, MN, 56601



FIRST FLOOR PLAN



website: www.AffinityRealEstate.com | email: info@affinityrealestate.com | office: 218-237-3333 | fax:218-237-3377



\$204,900
 MLS 6670254 Residential
 6582 Mayflower Road
 Bemidji MN 56601