



MLS 6670508 Lake Home

**\$549,000**

2,840 sq ft  
6 bedrooms  
3 baths

9032 Breezy Circle  
Alexandria MN 56308

Waterfront: Ida

Status: Active

#### Description:

This stunning newly constructed home offers the perfect blend of luxury and functionality, set on a generous .96-acre lot with additional access to Lake Ida via a shared association lot. The property features a spacious finished walkout basement, complete with a family room offering large windows and 10' ceilings, leading to a private patio—ideal for entertaining or enjoying peaceful evenings. The heart of the home showcases modern new appliances. Enjoy high-speed fiber optic internet, perfect for remote work or streaming your favorite shows. Expansive 44' x 12' composite deck. Quality construction, featuring an ICF foundation, guarantees durability. A large storage room houses top-of-the-line mechanical systems. Oversized heated garage provides ample space for your hobbies or extra storage. Additionally, indulge in the associations 6+ acre lot, which includes a community room (bathroom), a sandy beach, and picnic area. The seller is open to discussing the inclusion of a boat slip. Embrace lakeside living at its finest—your new home awaits!

#### Additional Details:

Year Built	2022
Lot Acres	0.96
Lot Dimensions	210, 211, 195, 200
Garage Stalls	2
School District	206
Taxes	\$2,180
Taxes with Assessments	\$2,732
Tax Year	2025

#### Additional Features:

**Basement:** Daylight/Lookout Windows, Drain Tiled, 8 ft+ Pour, Egress Window(s), Finished, Full, ICFs (Insulated Concrete Forms), Storage Space, Sump Basket, Walkout **Fuel:** Propane **Garage:** 2 **Heat:** Forced Air **Sewer:** City Sewer/Connected **Water:** Drilled, Private, Well **Air Conditioning:** Central Air

#### Driving Directions:

Co Rd 22 to Co Rd 6. Right on Foxy Ln to Wahtomin Trl to left on Breezy Circle to home on left.



Listed By:  
Counselor Realty Inc of Alex

Affinity Real Estate Inc. participates in the Regional Multiple Listing Service of Minnesota, Inc Broker Reciprocity (sm) program, allowing us to display other broker's listings on our website. All properties are subject to prior sale, change or withdrawal.



Call Affinity Real Estate

**218-237-3333**

[info@affinityrealestate.com](mailto:info@affinityrealestate.com)



Affinity Real Estate - 600 Park Avenue South - Park Rapids MN 56470





website: [www.AffinityRealEstate.com](http://www.AffinityRealEstate.com) | email: [info@affinityrealestate.com](mailto:info@affinityrealestate.com) | office: 218-237-3333 | fax: 218-237-3377



**\$549,000**  
MLS 6670508 Lake Home  
9032 Breezy Circle  
Alexandria MN 56308





website: [www.AffinityRealEstate.com](http://www.AffinityRealEstate.com) | email: [info@affinityrealestate.com](mailto:info@affinityrealestate.com) | office: 218-237-3333 | fax: 218-237-3377



**\$549,000**  
 MLS 6670508 Lake Home  
 9032 Breezy Circle  
 Alexandria MN 56308





website: [www.AffinityRealEstate.com](http://www.AffinityRealEstate.com) | email: [info@affinityrealestate.com](mailto:info@affinityrealestate.com) | office: 218-237-3333 | fax: 218-237-3377



**\$549,000**  
 MLS 6670508 Lake Home  
 9032 Breezy Circle  
 Alexandria MN 56308



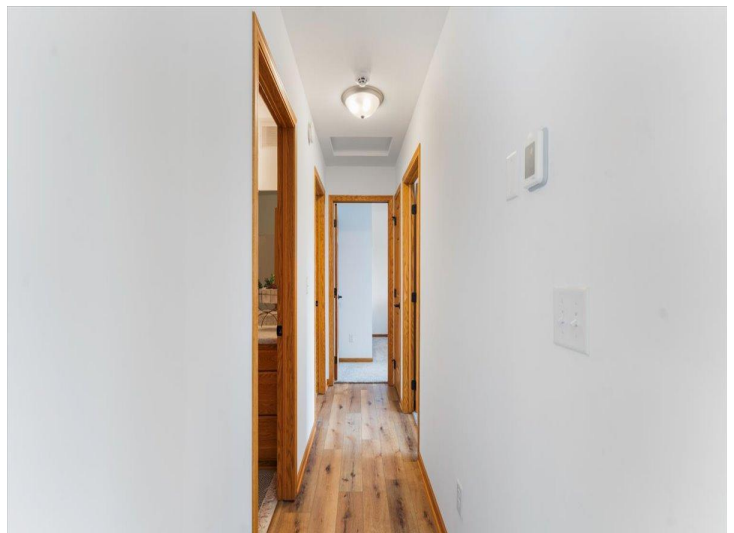


website: [www.AffinityRealEstate.com](http://www.AffinityRealEstate.com) | email: [info@affinityrealestate.com](mailto:info@affinityrealestate.com) | office: 218-237-3333 | fax: 218-237-3377



**\$549,000**  
 MLS 6670508 Lake Home  
 9032 Breezy Circle  
 Alexandria MN 56308



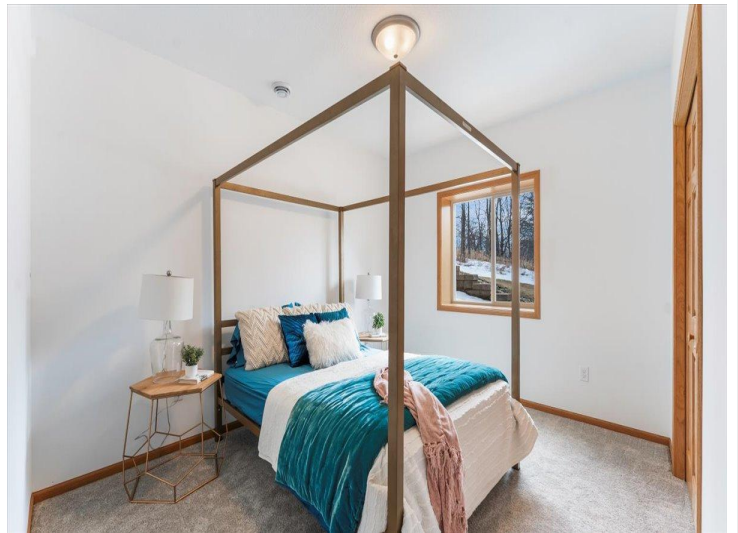
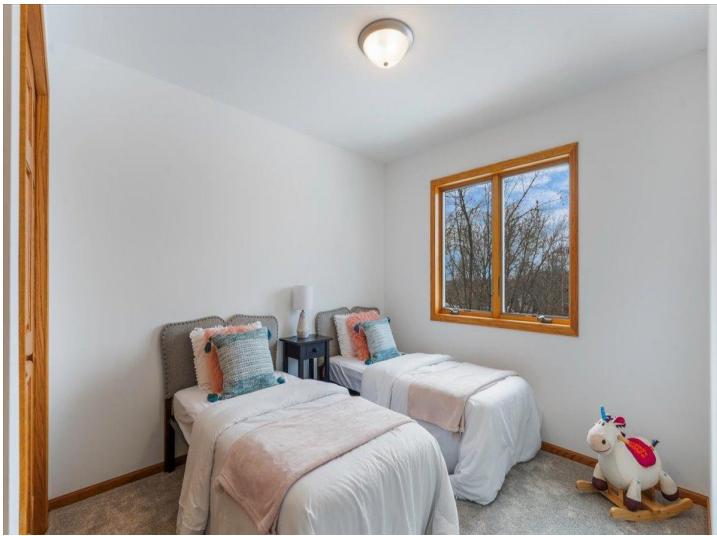


website: [www.AffinityRealEstate.com](http://www.AffinityRealEstate.com) | email: [info@affinityrealestate.com](mailto:info@affinityrealestate.com) | office: 218-237-3333 | fax: 218-237-3377



**\$549,000**  
 MLS 6670508 Lake Home  
 9032 Breezy Circle  
 Alexandria MN 56308



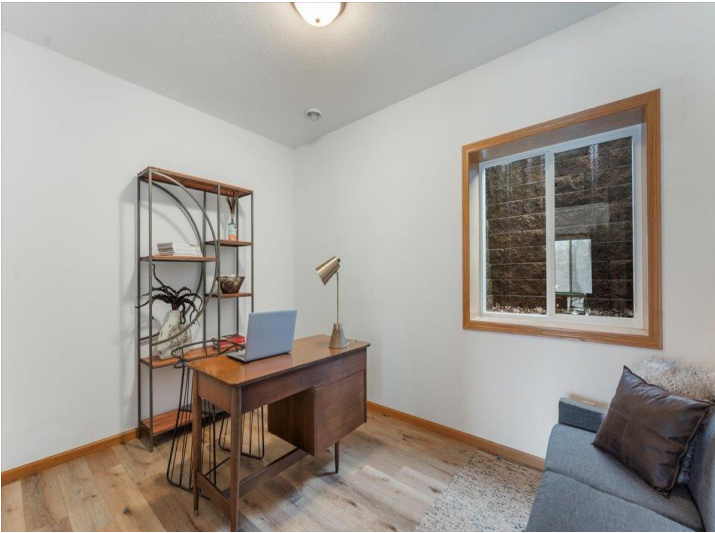


website: [www.AffinityRealEstate.com](http://www.AffinityRealEstate.com) | email: [info@affinityrealestate.com](mailto:info@affinityrealestate.com) | office: 218-237-3333 | fax: 218-237-3377

**Affinity**  
REAL ESTATE INC

**\$549,000**  
MLS 6670508 Lake Home  
9032 Breezy Circle  
Alexandria MN 56308



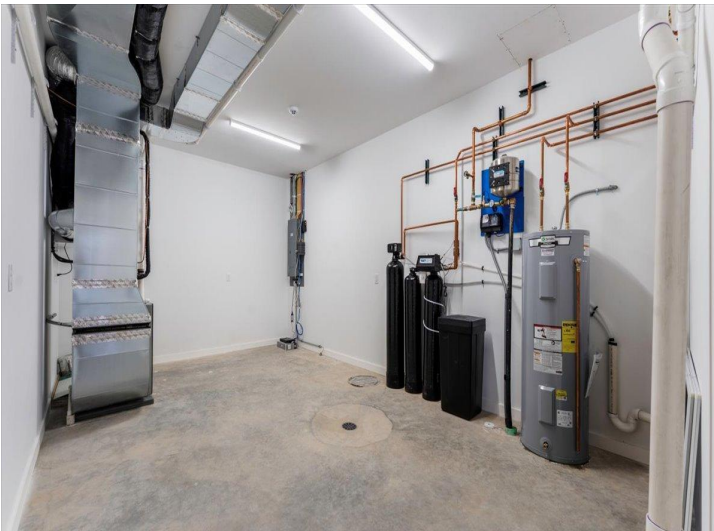


website: [www.AffinityRealEstate.com](http://www.AffinityRealEstate.com) | email: [info@affinityrealestate.com](mailto:info@affinityrealestate.com) | office: 218-237-3333 | fax: 218-237-3377

**Affinity**  
REAL ESTATE INC

**\$549,000**  
MLS 6670508 Lake Home  
9032 Breezy Circle  
Alexandria MN 56308



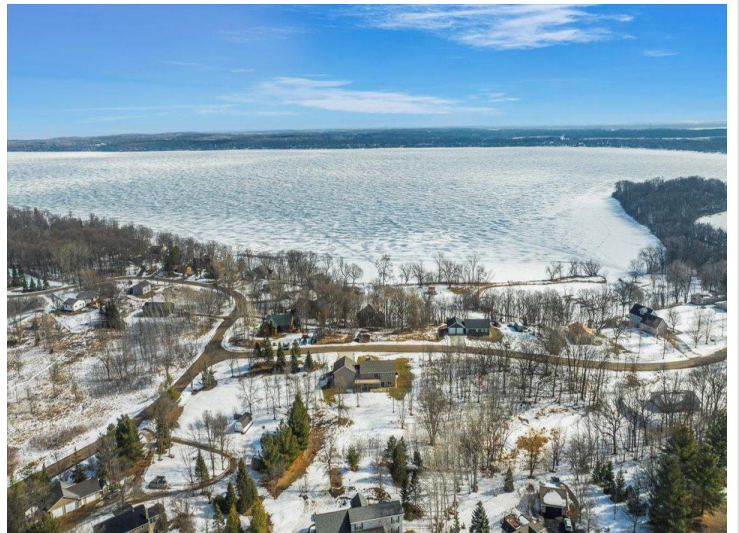
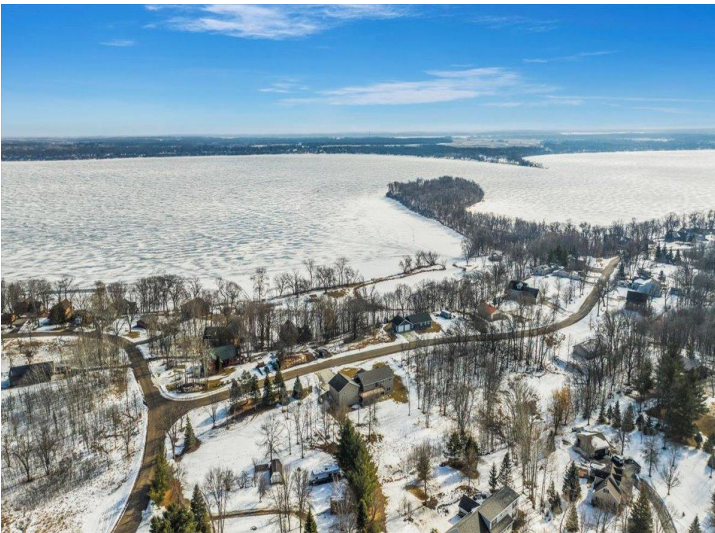


website: [www.AffinityRealEstate.com](http://www.AffinityRealEstate.com) | email: [info@affinityrealestate.com](mailto:info@affinityrealestate.com) | office: 218-237-3333 | fax: 218-237-3377



**\$549,000**  
MLS 6670508 Lake Home  
9032 Breezy Circle  
Alexandria MN 56308





website: [www.AffinityRealEstate.com](http://www.AffinityRealEstate.com) | email: [info@affinityrealestate.com](mailto:info@affinityrealestate.com) | office: 218-237-3333 | fax: 218-237-3377



**\$549,000**  
 MLS 6670508 Lake Home  
 9032 Breezy Circle  
 Alexandria MN 56308





website: [www.AffinityRealEstate.com](http://www.AffinityRealEstate.com) | email: [info@affinityrealestate.com](mailto:info@affinityrealestate.com) | office: 218-237-3333 | fax: 218-237-3377

**Affinity**  
REAL ESTATE INC

**\$549,000**  
MLS 6670508 Lake Home  
9032 Breezy Circle  
Alexandria MN 56308





website: [www.AffinityRealEstate.com](http://www.AffinityRealEstate.com) | email: [info@affinityrealestate.com](mailto:info@affinityrealestate.com) | office: 218-237-3333 | fax: 218-237-3377

**Affinity**  
REAL ESTATE INC

**\$549,000**  
MLS 6670508 Lake Home  
9032 Breezy Circle  
Alexandria MN 56308





website: [www.AffinityRealEstate.com](http://www.AffinityRealEstate.com) | email: [info@affinityrealestate.com](mailto:info@affinityrealestate.com) | office: 218-237-3333 | fax: 218-237-3377



**\$549,000**  
 MLS 6670508 Lake Home  
 9032 Breezy Circle  
 Alexandria MN 56308