



MLS 6670597 Land

\$260,000

65.94 Acres
Raw Land

TBD Arbor Rd
Park Rapids MN 56470

Status: Active

Description:

!!!Attention white tailed deer hunters, turkey hunters, grouse hunters, black bear hunters, and waterfowl hunters!!! Look no further as this property is LOADED with potential. The property is situated near high nutritional agricultural land with history of very large deer and large numbers of turkeys. High ground levels off into hardwood and tamarack swamp habitats providing ideal bedding habitat for deer and roosting habitat for turkeys. Multiple habitat types converge on this property providing incredible travel corridors (ahem, hunting opportunities!) for all animals. Edge habitat is even present with a large transmission powerline right-of-way that runs the southern edge of the property. High ground areas provide plenty of room for a structure or dwelling. Although this would make an outstanding hunting camp, a seasonal or year-round home would also fit very nicely on this property!

Additional Details:

Lot Acres	65.94
Lot Dimensions	Irregular
School District	309
Taxes	\$442
Taxes with Assessments	\$442
Tax Year	2024

Additional Features:

Driving Directions:

From Hubbard, head south on County 6/Lake St. Turn right onto Arbor Rd. Acreage will be on the left (approximately 0.5 miles)



Listed By:
Keller Williams Realty Professionals

Affinity Real Estate Inc. participates in the Regional Multiple Listing Service of Minnesota, Inc Broker Reciprocity (sm) program, allowing us to display other broker's listings on our website. All properties are subject to prior sale, change or withdrawal.



Call Affinity Real Estate

218-237-3333

info@affinityrealestate.com



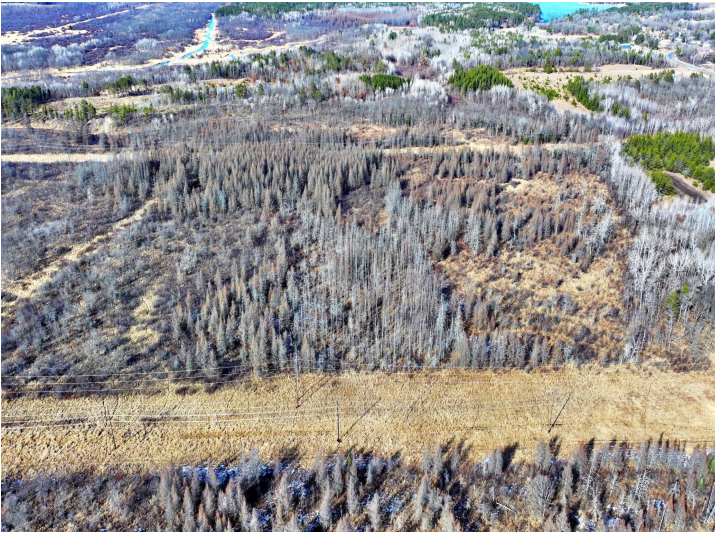
Affinity Real Estate - 600 Park Avenue South - Park Rapids MN 56470



website: www.AffinityRealEstate.com | email: info@affinityrealestate.com | office: 218-237-3333 | fax: 218-237-3377



\$260,000
 MLS 6670597 Land
 TBD Arbor Rd
 Park Rapids MN 56470



website: www.AffinityRealEstate.com | email: info@affinityrealestate.com | office: 218-237-3333 | fax: 218-237-3377



\$260,000
 MLS 6670597 Land
 TBD Arbor Rd
 Park Rapids MN 56470



website: www.AffinityRealEstate.com | email: info@affinityrealestate.com | office: 218-237-3333 | fax:218-237-3377



\$260,000

MLS 6670597 Land

TBD Arbor Rd

Park Rapids MN 56470