



MLS 6670611 Residential

\$62,000

2,232 sq ft
3 bedrooms
2 baths

348 Main Street
Motley MN 56466

Status: Active

Description:

Discover the opportunity for one-level living in the heart of Motley, MN. This 3-bedroom, 2-bath home features a full main bedroom suite and is ideally located next to Ernie Converse Park, offering convenient access to green spaces and recreational amenities. The property includes a 2-stall attached garage and a 16x18 storage shed, providing extra storage or workspace. With its functional layout, this home is ready for you to add your personal touch and make it your own, all in a well-situated, park-adjacent neighborhood.

Additional Details:

Year Built	2003
Lot Acres	0.17
Lot Dimensions	50x147x50x147
Garage Stalls	2
School District	2170
Taxes	\$1,863
Taxes with Assessments	\$2,222
Tax Year	2024

Additional Features:

Fuel: Natural Gas **Heat:** Forced Air

Driving Directions:

From Hwy 10 NW take a right onto Beaulieu St. W, then take a right on 5th Ave. S which turns into Main St. W - second home on left after going around corner.



Listed By:
Gallery of Homes

Affinity Real Estate Inc. participates in the Regional Multiple Listing Service of Minnesota, Inc Broker Reciprocity (sm) program, allowing us to display other broker's listings on our website. All properties are subject to prior sale, change or withdrawal.



Call Affinity Real Estate

218-237-3333

info@affinityrealestate.com



Affinity Real Estate - 600 Park Avenue South - Park Rapids MN 56470



website: www.AffinityRealEstate.com | email: info@affinityrealestate.com | office: 218-237-3333 | fax:218-237-3377

Affinity
REAL ESTATE INC

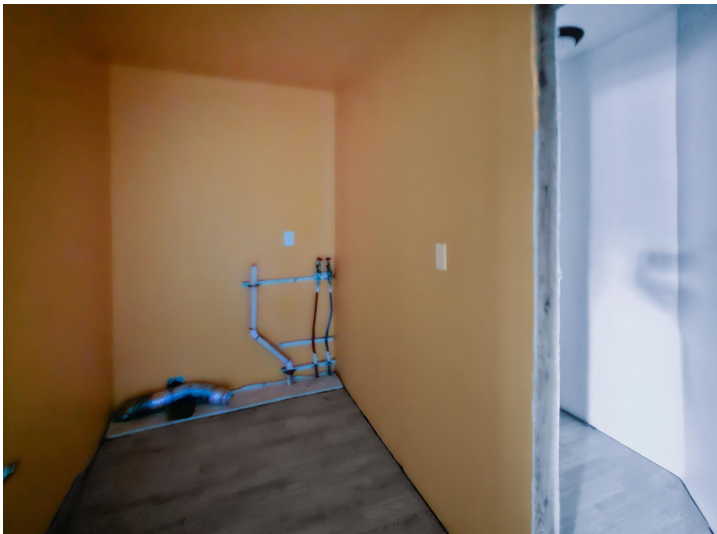
\$62,000
MLS 6670611 Residential
348 Main Street
Motley MN 56466



website: www.AffinityRealEstate.com | email: info@affinityrealestate.com | office: 218-237-3333 | fax:218-237-3377

Affinity
REAL ESTATE INC

\$62,000
MLS 6670611 Residential
348 Main Street
Motley MN 56466



website: www.AffinityRealEstate.com | email: info@affinityrealestate.com | office: 218-237-3333 | fax:218-237-3377

Affinity
REAL ESTATE INC

\$62,000
MLS 6670611 Residential
348 Main Street
Motley MN 56466



For illustration purposes only. Not to scale.

Motley, 348 Main St

website: www.AffinityRealEstate.com | email: info@affinityrealestate.com | office: 218-237-3333 | fax: 218-237-3377



\$62,000
 MLS 6670611 Residential
 348 Main Street
 Motley MN 56466