



MLS 6670777 Residential

\$389,900

2,420 sq ft
4 bedrooms
3 baths

2955 Saint Onge Drive
Bemidji MN 56601

Status: Active

Description:

Welcome to Saint Onge, a great neighborhood on the east side of Bemidji. This home rests on a 1.22 acre wooded lot with mature trees, abundant wildlife, level lot and a private pristine backyard. Just minutes from lakes, trails, shopping, health care facilities you cannot beat this location. The home is laid out for all, with 2 bedrooms 2 bathrooms on the main floor, a second living room downstairs and another $\frac{3}{4}$ bath and 2 bedrooms providing plenty of space for all. If you are looking for storage, not a sq inch was missed when this home was built. And for the garage enthusiasts, a double stall attached garage leads to a 24x30 and 20x50 attached shop as well that is heated!!

Additional Details:

Year Built	2002
Lot Acres	1.23
Lot Dimensions	320x150
Garage Stalls	6
School District	31
Taxes	\$4,090
Taxes with Assessments	\$4,090
Tax Year	2024

Additional Features:

Basement: Daylight/Lookout Windows, Egress Window(s), Finished, Full, Sump Basket, Sump Pump **Fuel:** Natural Gas **Garage:** 6 **Heat:** Forced Air **Sewer:** Private Sewer, Septic System Compliant - Yes, Tank with Drainage Field **Water:** Submersible - 4 Inch, Drilled, Private, Well **Air Conditioning:** Central Air

Driving Directions:

1st ST to Lake Ave left to Saint Onge home is on left 2nd Driveway



Listed By:
218 Real Estate

Affinity Real Estate Inc. participates in the Regional Multiple Listing Service of Minnesota, Inc Broker Reciprocity (sm) program, allowing us to display other broker's listings on our website. All properties are subject to prior sale, change or withdrawal.



Call Affinity Real Estate

218-237-3333

info@affinityrealestate.com



Affinity Real Estate - 600 Park Avenue South - Park Rapids MN 56470



website: www.AffinityRealEstate.com | email: info@affinityrealestate.com | office: 218-237-3333 | fax: 218-237-3377

Affinity
REAL ESTATE INC

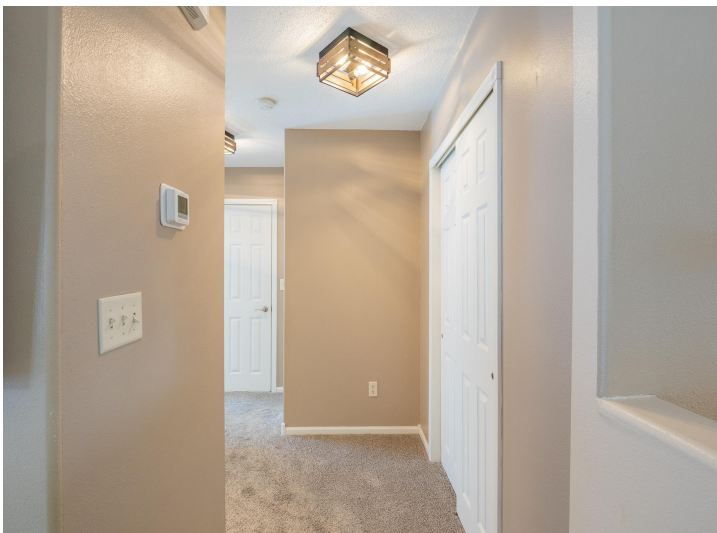
\$389,900
MLS 6670777 Residential
2955 Saint Onge Drive
Bemidji MN 56601



website: www.AffinityRealEstate.com | email: info@affinityrealestate.com | office: 218-237-3333 | fax: 218-237-3377

Affinity
REAL ESTATE INC

\$389,900
MLS 6670777 Residential
2955 Saint Onge Drive
Bemidji MN 56601



website: www.AffinityRealEstate.com | email: info@affinityrealestate.com | office: 218-237-3333 | fax: 218-237-3377

Affinity
REAL ESTATE INC

\$389,900
MLS 6670777 Residential
2955 Saint Onge Drive
Bemidji MN 56601



website: www.AffinityRealEstate.com | email: info@affinityrealestate.com | office: 218-237-3333 | fax: 218-237-3377

Affinity
REAL ESTATE INC

\$389,900
MLS 6670777 Residential
2955 Saint Onge Drive
Bemidji MN 56601



website: www.AffinityRealEstate.com | email: info@affinityrealestate.com | office: 218-237-3333 | fax: 218-237-3377



\$389,900
 MLS 6670777 Residential
 2955 Saint Onge Drive
 Bemidji MN 56601



website: www.AffinityRealEstate.com | email: info@affinityrealestate.com | office: 218-237-3333 | fax: 218-237-3377

Affinity
REAL ESTATE INC

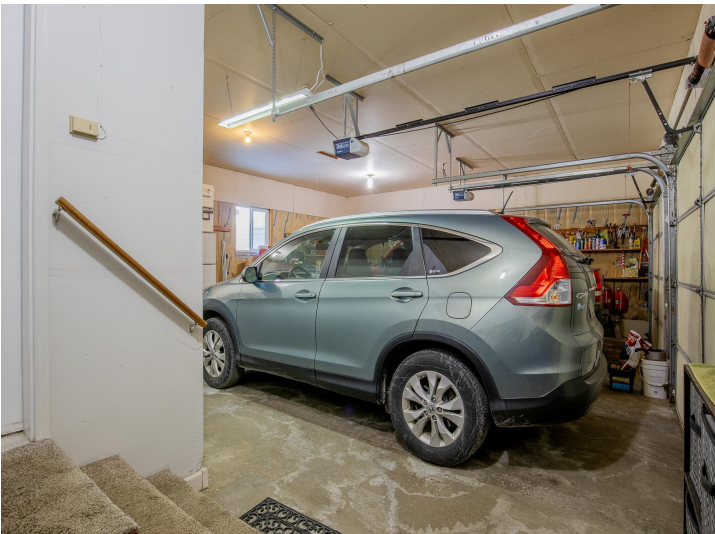
\$389,900
MLS 6670777 Residential
2955 Saint Onge Drive
Bemidji MN 56601



website: www.AffinityRealEstate.com | email: info@affinityrealestate.com | office: 218-237-3333 | fax: 218-237-3377



\$389,900
 MLS 6670777 Residential
 2955 Saint Onge Drive
 Bemidji MN 56601



website: www.AffinityRealEstate.com | email: info@affinityrealestate.com | office: 218-237-3333 | fax: 218-237-3377

Affinity
REAL ESTATE INC

\$389,900
MLS 6670777 Residential
2955 Saint Onge Drive
Bemidji MN 56601



website: www.AffinityRealEstate.com | email: info@affinityrealestate.com | office: 218-237-3333 | fax: 218-237-3377

Affinity
REAL ESTATE INC

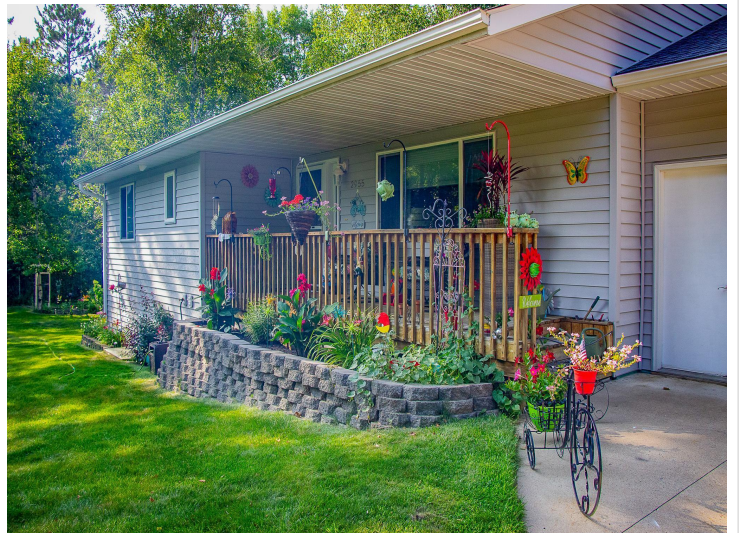
\$389,900
MLS 6670777 Residential
2955 Saint Onge Drive
Bemidji MN 56601



website: www.AffinityRealEstate.com | email: info@affinityrealestate.com | office: 218-237-3333 | fax: 218-237-3377

Affinity
REAL ESTATE INC

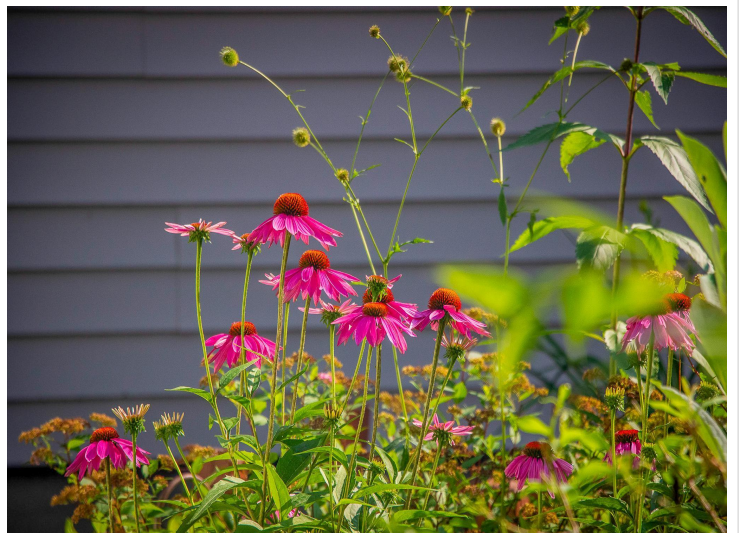
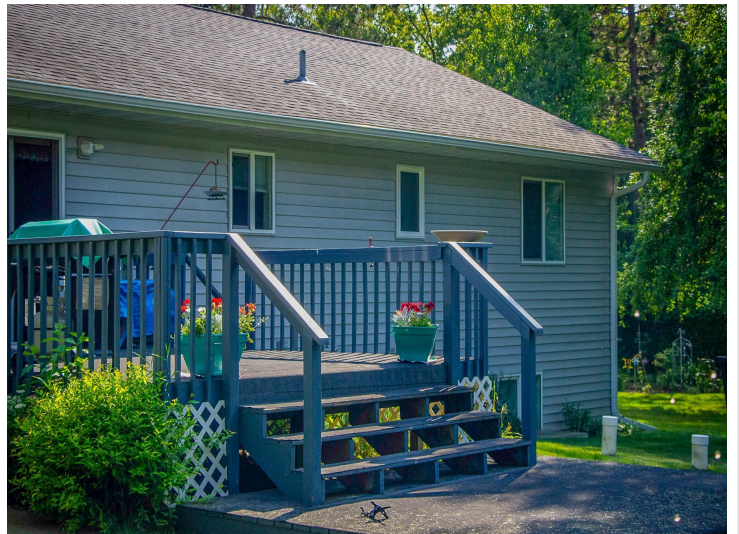
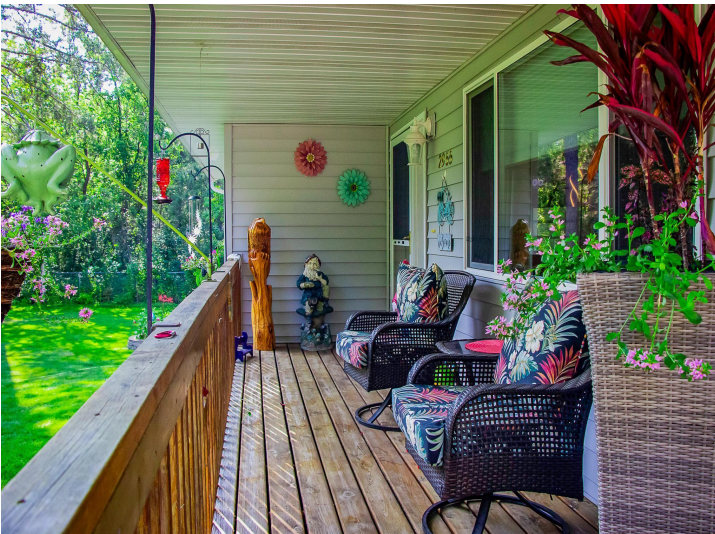
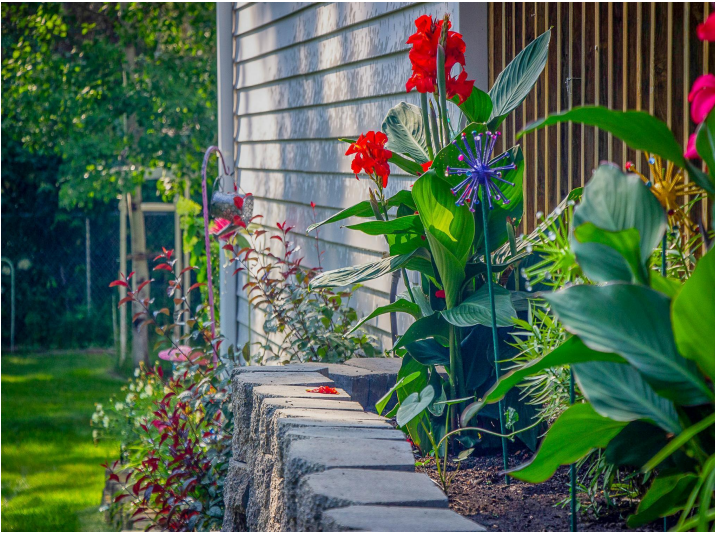
\$389,900
MLS 6670777 Residential
2955 Saint Onge Drive
Bemidji MN 56601



website: www.AffinityRealEstate.com | email: info@affinityrealestate.com | office: 218-237-3333 | fax: 218-237-3377

Affinity
REAL ESTATE INC

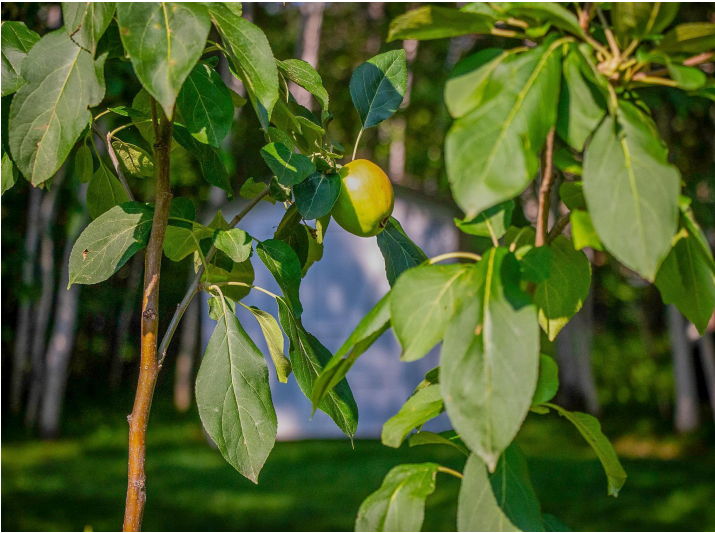
\$389,900
MLS 6670777 Residential
2955 Saint Onge Drive
Bemidji MN 56601



website: www.AffinityRealEstate.com | email: info@affinityrealestate.com | office: 218-237-3333 | fax: 218-237-3377

Affinity
REAL ESTATE INC

\$389,900
MLS 6670777 Residential
2955 Saint Onge Drive
Bemidji MN 56601



website: www.AffinityRealEstate.com | email: info@affinityrealestate.com | office: 218-237-3333 | fax:218-237-3377



\$389,900

MLS 6670777 Residential
2955 Saint Onge Drive
Bemidji MN 56601