



MLS 6670786 Residential

\$229,900

1,404 sq ft
3 bedrooms
1 baths

620 Taft Avenue
Bemidji MN 56601

Status: Active

Description:

Welcome to this charming one-level, 3-bedroom, 1-bath home nestled in a peaceful and quiet neighborhood. As you step inside, you'll be greeted by a spacious, inviting entryway that sets the tone for the rest of the home. The living areas are bright and airy, with many updates throughout, including a remodeled kitchen, modern bathroom, and new flooring that flows seamlessly throughout the home.

The home offers a comfortable and functional layout, with generous-sized bedrooms that provide plenty of space for rest and relaxation. Outside, the large, fenced-in backyard is a true highlight, featuring a charming patio perfect for outdoor dining and entertaining. You'll also appreciate the fruit trees and lush perennial landscaping that create a serene and private atmosphere.

A single detached garage offers additional storage, and the attached screened-in porch is ideal for enjoying warm summer evenings without the hassle of bugs. Towering shade trees provide cool relief on hot days and enhance the home's curb appeal.

This well-maintained home offers the perfect blend of comfort, style, and functionality. Don't miss your chance to make this inviting home your own!

Additional Details:

Year Built	1963
Lot Acres	0.4
Lot Dimensions	105x164
Garage Stalls	1
School District	31
Taxes	\$2,034
Taxes with Assessments	\$2,034
Tax Year	2023

Additional Features:

Basement: None **Fuel:** Natural Gas **Garage:** 1 **Heat:** Forced Air **Sewer:** City Sewer/Connected **Water:** City Water/Connected **Air Conditioning:** Central Air

Driving Directions:



Listed by: [Redacted] on Stoner Ave, right on Taft, 4th home on the right



Call Affinity Real Estate

218-237-3333

info@affinityrealestate.com



Affinity Real Estate - 600 Park Avenue South - Park Rapids MN 56470



website: www.AffinityRealEstate.com | email: info@affinityrealestate.com | office: 218-237-3333 | fax:218-237-3377



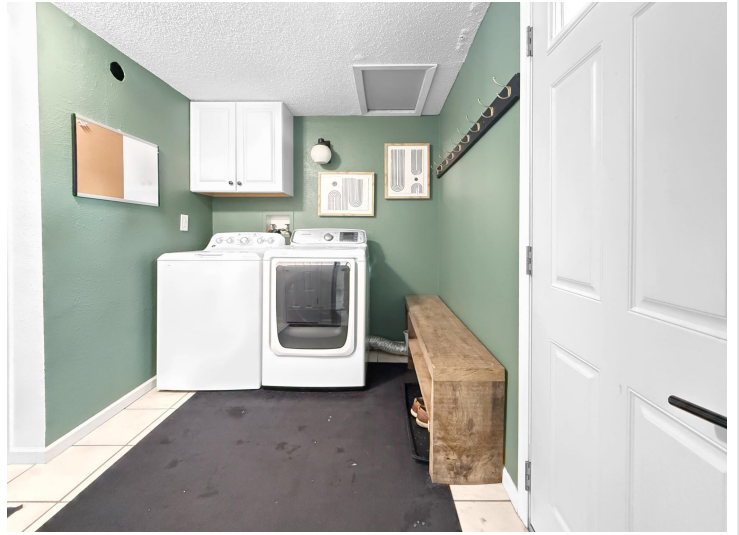
\$229,900
MLS 6670786 Residential
620 Taft Avenue
Bemidji MN 56601



website: www.AffinityRealEstate.com | email: info@affinityrealestate.com | office: 218-237-3333 | fax:218-237-3377



\$229,900
MLS 6670786 Residential
620 Taft Avenue
Bemidji MN 56601



website: www.AffinityRealEstate.com | email: info@affinityrealestate.com | office: 218-237-3333 | fax:218-237-3377

Affinity
REAL ESTATE INC

\$229,900
MLS 6670786 Residential
620 Taft Avenue
Bemidji MN 56601



website: www.AffinityRealEstate.com | email: info@affinityrealestate.com | office: 218-237-3333 | fax:218-237-3377



\$229,900
MLS 6670786 Residential
620 Taft Avenue
Bemidji MN 56601