



MLS 6670875 Lake Land

**\$89,900**

**Description:**

Welcome to this unique Owl lakefront property that spans a generous 2.69 acres, graced with 532 feet of shoreline and features land on both sides of the road, ensuring exclusive access and endless possibilities. Nestled amidst a serene, heavily wooded area, this parcel offers unparalleled privacy and a retreat-like ambiance. Imagine driving up to your tarred driveway, enveloped by mature trees and the gentle rustling of leaves. The lot faces West, promising breathtaking sunsets that paint the sky and shimmer across the tranquil waters. Whether you're dreaming of building a cozy cabin, a luxurious lake house, or simply seeking a peaceful getaway, this lot is your blank canvas. Embrace the beauty of nature, the allure of the lake, and the promise of endless adventures. Your dream property awaits - seize this rare opportunity to own a piece of lakeside paradise.

**Additional Details:**

Lot Acres	2.69
Lot Dimensions	532x619x115x352
School District	308
Taxes	\$476
Taxes with Assessments	\$476
Tax Year	2024

**Additional Features:**

**Driving Directions:**

From 34/71 in Park Rapids, East on 34 to a right on 269th Ave to a left on 218th to a left on Forest Pines Drive to where the blacktop starts just past the first home. Property on both sides of the road.



Listed By:  
Wolff & Simon Real Estate

Affinity Real Estate Inc. participates in the Regional Multiple Listing Service of Minnesota, Inc Broker Reciprocity (sm) program, allowing us to display other broker's listings on our website. All properties are subject to prior sale, change or withdrawal.



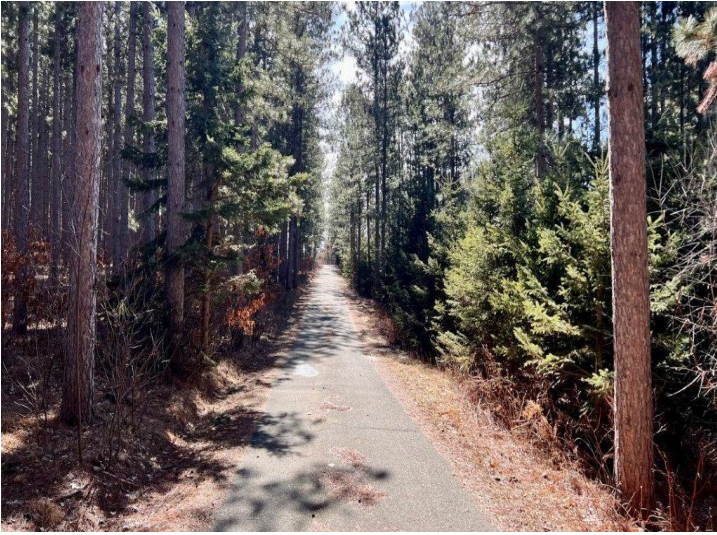
**Call Affinity Real Estate**

**218-237-3333**

**info@affinityrealestate.com**



**Affinity Real Estate - 600 Park Avenue South - Park Rapids MN 56470**



website: [www.AffinityRealEstate.com](http://www.AffinityRealEstate.com) | email: [info@affinityrealestate.com](mailto:info@affinityrealestate.com) | office: 218-237-3333 | fax:218-237-3377



**\$89,900**  
MLS 6670875 Lake Land  
TBD Forest Pines Drive  
Nevis MN 56467

