



MLS 6671014 Land

\$49,900

5.41 Acres
Raw Land

XXX Charles Lane
Park Rapids MN 56470

Status: Pending

Description:

Two Inlets Area - If you're looking for a property to build your future home or a weekend getaway, here is a great lot with many possibilities. This parcel has 5+ acres with access off township road and county road with walk-out possibilities and great views. Located within minutes to Boot Lake access and also many recreational trails and Two Inlets State Forest.
\$49,900

Additional Details:

Lot Acres	5.41
Lot Dimensions	498 x 465
School District	309
Taxes	\$150
Taxes with Assessments	(unreported)
Tax Year	2024

Additional Features:

Driving Directions:

Take Highway 71 N 11 miles to CR 41 and turn L. Proceed 6 miles to CR 46 and turn R. Take the first R on Charles Lane and continue 1000' and property will be on the L. You can also access off of CR 46.



Listed By:
Affinity Real Estate Inc.

Affinity Real Estate Inc. participates in the Regional Multiple Listing Service of Minnesota, Inc Broker Reciprocity (sm) program, allowing us to display other broker's listings on our website. All properties are subject to prior sale, change or withdrawal.



Call Affinity Real Estate

218-237-3333

info@affinityrealestate.com



Affinity Real Estate - 600 Park Avenue South - Park Rapids MN 56470



website: www.AffinityRealEstate.com | email: info@affinityrealestate.com | office: 218-237-3333 | fax:218-237-3377



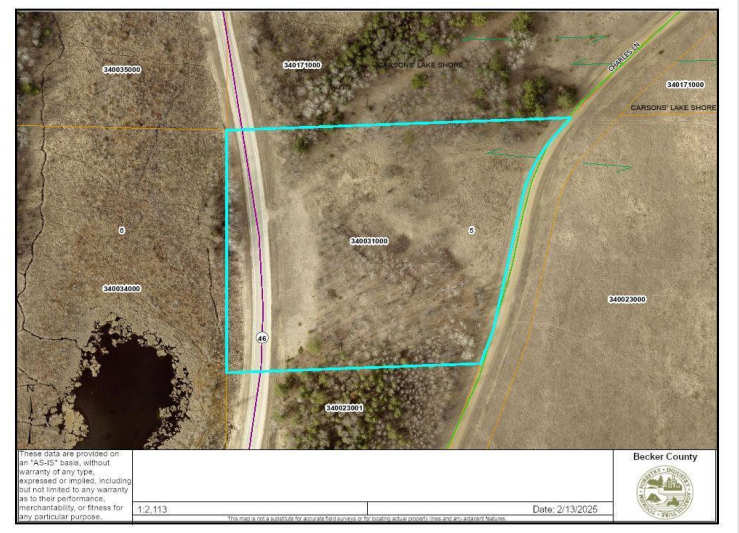
\$49,900
MLS 6671014 Land
XXX Charles Lane
Park Rapids MN 56470



website: www.AffinityRealEstate.com | email: info@affinityrealestate.com | office: 218-237-3333 | fax:218-237-3377



\$49,900
MLS 6671014 Land
XXX Charles Lane
Park Rapids MN 56470



website: www.AffinityRealEstate.com | email: info@affinityrealestate.com | office: 218-237-3333 | fax:218-237-3377



\$49,900
 MLS 6671014 Land
 XXX Charles Lane
 Park Rapids MN 56470