



MLS 6671193 Residential

\$326,600

1,486 sq ft
3 bedrooms
2 baths

1267 Averi Circle
Bemidji MN 56601

Status: Pending

Description:

Welcome to Averi Circle, where comfort meets charm! This beautifully updated 3-bedroom, 2-bathroom home is nestled in a peaceful neighborhood, offering the perfect retreat. Step inside to discover brand-new windows and updated lighting, creating a bright and inviting atmosphere.

Enjoy outdoor living at its finest with a new deck, patio area, and gazebo, perfect for relaxing or entertaining in your quaint backyard. This home is move-in ready and waiting for you!

Peace of mind, sellers are doing a pre-home inspection. Don't miss out! Schedule your tour today!

Additional Details:

Year Built	2010
Lot Acres	1.07
Lot Dimensions	340 x
Garage Stalls	2
School District	31
Taxes	\$2,526
Taxes with Assessments	\$2,526
Tax Year	2024

Additional Features:

Basement: None **Fuel:** Electric, Propane **Garage:** 2 **Heat:** Boiler, Dual, Fireplace(s), Radiant Floor **Sewer:** Septic System Compliant - Yes
Water: Well **Air Conditioning:** Ductless Mini-Split

Driving Directions:

5th St to right on Schroeder Rd to left on Grant Valley Rd to left on Averi Circle. Take a left to property on the left.



Listed By:
Real Broker, LLC

Affinity Real Estate Inc. participates in the Regional Multiple Listing Service of Minnesota, Inc Broker Reciprocity (sm) program, allowing us to display other broker's listings on our website. All properties are subject to prior sale, change or withdrawal.



Call Affinity Real Estate

218-237-3333

info@affinityrealestate.com



Affinity Real Estate - 600 Park Avenue South - Park Rapids MN 56470



website: www.AffinityRealEstate.com | email: info@affinityrealestate.com | office: 218-237-3333 | fax:218-237-3377

Affinity
REAL ESTATE INC

\$326,600
MLS 6671193 Residential
1267 Averi Circle
Bemidji MN 56601



website: www.AffinityRealEstate.com | email: info@affinityrealestate.com | office: 218-237-3333 | fax: 218-237-3377

Affinity
REAL ESTATE INC

\$326,600
MLS 6671193 Residential
1267 Averi Circle
Bemidji MN 56601



website: www.AffinityRealEstate.com | email: info@affinityrealestate.com | office: 218-237-3333 | fax:218-237-3377

Affinity
REAL ESTATE INC

\$326,600
MLS 6671193 Residential
1267 Averi Circle
Bemidji MN 56601



website: www.AffinityRealEstate.com | email: info@affinityrealestate.com | office: 218-237-3333 | fax: 218-237-3377

Affinity
REAL ESTATE INC

\$326,600
MLS 6671193 Residential
1267 Averil Circle
Bemidji MN 56601



website: www.AffinityRealEstate.com | email: info@affinityrealestate.com | office: 218-237-3333 | fax: 218-237-3377

Affinity
REAL ESTATE INC

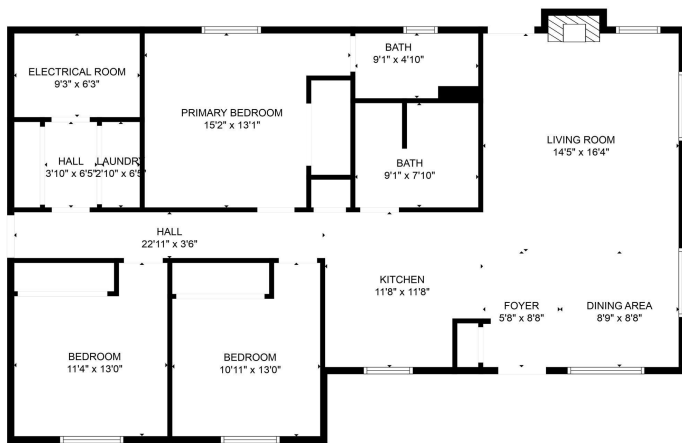
\$326,600
MLS 6671193 Residential
1267 Averi Circle
Bemidji MN 56601



website: www.AffinityRealEstate.com | email: info@affinityrealestate.com | office: 218-237-3333 | fax: 218-237-3377

Affinity
REAL ESTATE INC

\$326,600
MLS 6671193 Residential
1267 Averi Circle
Bemidji MN 56601



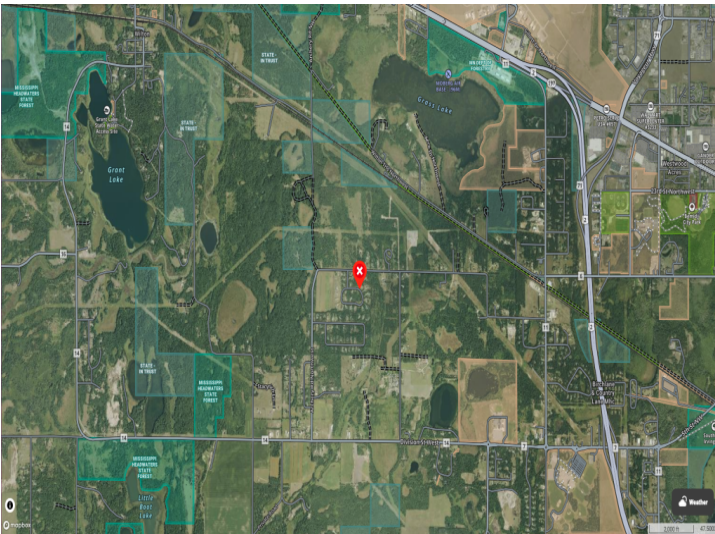
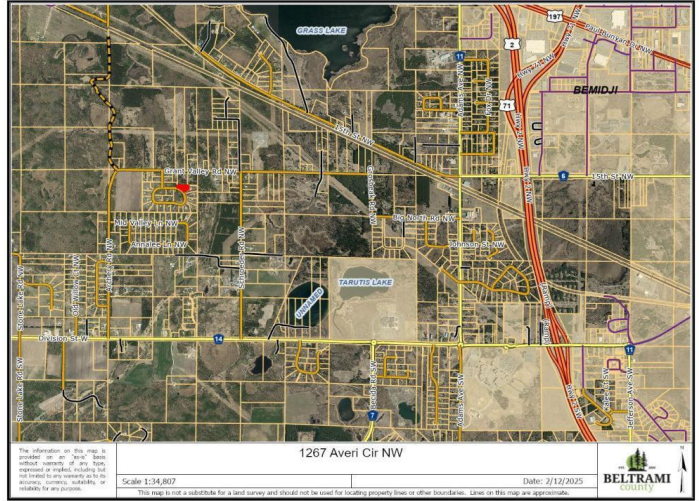
FLOOR PLAN CREATED BY CUBSCASA APP; MEASUREMENTS DEEMED HIGHLY RELIABLE BUT NOT GUARANTEED.



website: www.AffinityRealEstate.com | email: info@affinityrealestate.com | office: 218-237-3333 | fax:218-237-3377



\$326,600
 MLS 6671193 Residential
 1267 Aver Circle
 Bemidji MN 56601



website: www.AffinityRealEstate.com | email: info@affinityrealestate.com | office: 218-237-3333 | fax: 218-237-3377



\$326,600
 MLS 6671193 Residential
 1267 Averi Circle
 Bemidji MN 56601