



MLS 6671301 Residential

\$214,900

1,280 sq ft
2 bedrooms
2 baths

50123 County 3
Bemidji MN 56601

Status: Active

Description:

Enjoy the peaceful country life in this meticulously kept and totally remodeled home. 2 bedrooms 2 baths with open great room including a wood burning fireplace. The home is well insulated both on main and underneath for efficiency and also has capabilities being operated via generator. Also included is a 36'x36' finished/ heated garage with spray foam walls & in floor boiler heat. This 10 acres is well set up for the current homestead with an extra spot for RV or any future building. This Hubbard county location is excellent for outdoor enthusiasts that enjoy fishing, hunting, & snowmobiling. Located about 11 miles from Bemidji on a tarred county HWY.

Additional Details:

Year Built	1997
Lot Acres	10
Lot Dimensions	660x660
Garage Stalls	3
School District	31
Taxes	\$650
Taxes with Assessments	\$650
Tax Year	2024

Additional Features:

Basement: None **Fuel:** Propane, Wood **Garage:** 3 **Heat:** Boiler, Forced Air, Fireplace(s) **Sewer:** Private Sewer **Water:** Private **Air Conditioning:** Window Unit(s)

Driving Directions:

South on the Becida Rd 10 miles or so to the property.



Listed By:
Grimes Realty

Affinity Real Estate Inc. participates in the Regional Multiple Listing Service of Minnesota, Inc Broker Reciprocity (sm) program, allowing us to display other broker's listings on our website. All properties are subject to prior sale, change or withdrawal.



Call Affinity Real Estate

218-237-3333

info@affinityrealestate.com



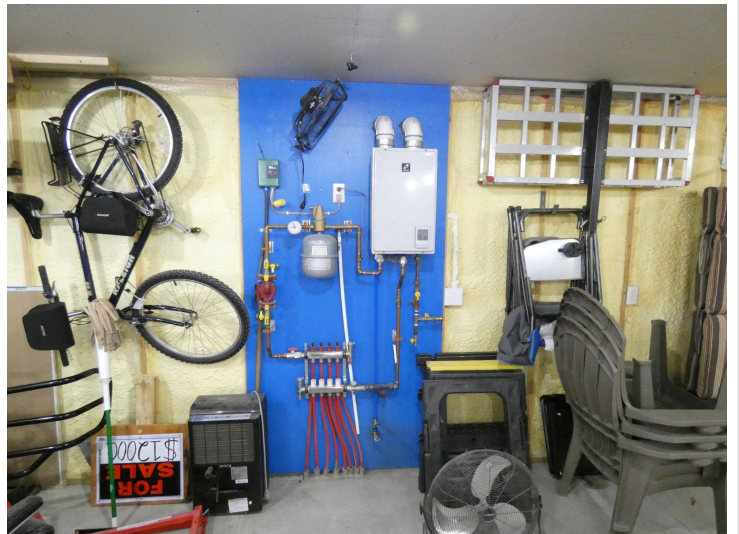
Affinity Real Estate - 600 Park Avenue South - Park Rapids MN 56470



website: www.AffinityRealEstate.com | email: info@affinityrealestate.com | office: 218-237-3333 | fax:218-237-3377



\$214,900
MLS 6671301 Residential
50123 County 3
Bemidji MN 56601



website: www.AffinityRealEstate.com | email: info@affinityrealestate.com | office: 218-237-3333 | fax:218-237-3377



\$214,900
MLS 6671301 Residential
50123 County 3
Bemidji MN 56601



website: www.AffinityRealEstate.com | email: info@affinityrealestate.com | office: 218-237-3333 | fax:218-237-3377

Affinity
REAL ESTATE INC

\$214,900
MLS 6671301 Residential
50123 County 3
Bemidji MN 56601



website: www.AffinityRealEstate.com | email: info@affinityrealestate.com | office: 218-237-3333 | fax: 218-237-3377

Affinity
REAL ESTATE INC

\$214,900
MLS 6671301 Residential
50123 County 3
Bemidji MN 56601