



MLS 6671351 Commercial Sale

\$450,000



Description:

Well constructed building in Bemidji's Industrial Park. Built in 2006, the space offers 1,248sf of office space (showroom, two offices, breakroom) and 3,744sf of shop space with a 16w x 10h overhead door. Building has 3 phase power in plus shop area fully sprinkled. In floor heat in the shop, forced air in the office areas. Building for lease as well.

Additional Details:

Year Built	2006
Lot Dimensions	265x355
Garage Stalls	1
School District	31
Taxes	\$8,012
Taxes with Assessments	\$8,012
Tax Year	2024

Additional Features:

Fuel: Electric **Garage:** 1 **Heat:** Boiler, Forced Air, Radiant Floor **Sewer:** City Sewer/Connected **Water:** City Water/Connected **Air Conditioning:** Central Air

Driving Directions:

1407 Naylor Drive SE



Listed By:
Lake-N-Woods Realty

Affinity Real Estate Inc. participates in the Regional Multiple Listing Service of Minnesota, Inc Broker Reciprocity (sm) program, allowing us to display other broker's listings on our website. All properties are subject to prior sale, change or withdrawal.



Call Affinity Real Estate

218-237-3333

info@affinityrealestate.com



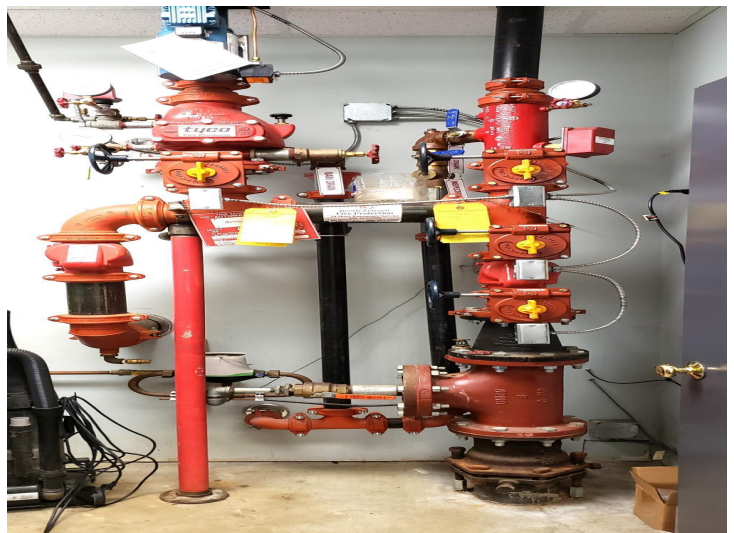
Affinity Real Estate - 600 Park Avenue South - Park Rapids MN 56470



website: www.AffinityRealEstate.com | email: info@affinityrealestate.com | office: 218-237-3333 | fax:218-237-3377



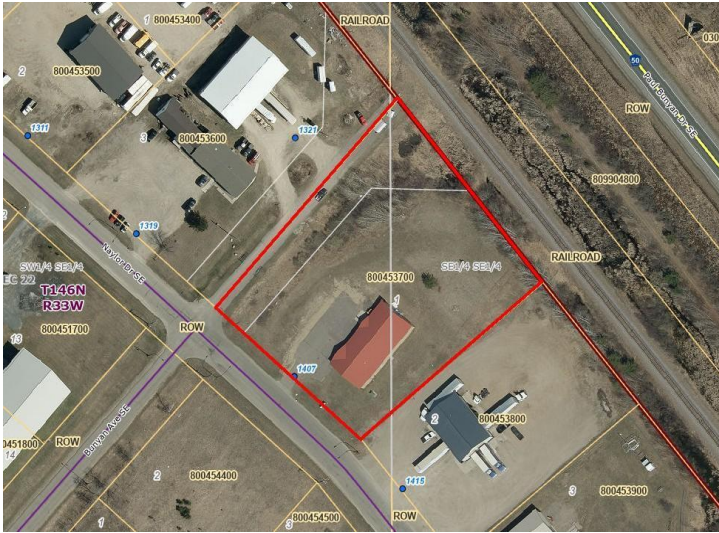
\$450,000
MLS 6671351 Commercial
Sale
1407 Naylor Drive SE
Bemidji MN 56601



website: www.AffinityRealEstate.com | email: info@affinityrealestate.com | office: 218-237-3333 | fax:218-237-3377

Affinity
REAL ESTATE INC

\$450,000
MLS 6671351 Commercial
Sale
1407 Naylor Drive SE
Bemidji MN 56601



website: www.AffinityRealEstate.com | email: info@affinityrealestate.com | office: 218-237-3333 | fax: 218-237-3377



\$450,000
MLS 6671351 Commercial
Sale
1407 Naylor Drive SE
Bemidji MN 56601