



MLS 6671392 Commercial

**\$8**

1018 Industrial Park Drive SE  
Bemidji MN 56601

Status: Active



**Description:**

Opportunity for 14,000sf building on three acres in Bemidji's Industrial Park! Solid construction; 10,000sf of multi-purpose space in the front (formerly a call center) with 4,000sf of heated shop/warehouse space at the back. One 12w x 14h door (can convert to 16'h) and one 8h x 9w door. Floor drain near doors. Massive paved parking lot with 115 spaces available. Fully fenced with automatic security gate. Building available for lease or for sale.

**Additional Details:**

Year Built	1995
Lot Acres	3.06
Lot Dimensions	400 x 325
Garage Stalls	2
School District	31
Taxes	\$19,582
Taxes with Assessments	\$19,582
Tax Year	2024

**Additional Features:**

**Fuel:** Natural Gas **Garage:** 2 **Heat:** Forced Air **Sewer:** City Sewer/Connected **Water:** City Water/Connected

**Driving Directions:**

1018 Industrial Park Drive SE



Listed By:  
Lake-N-Woods Realty

Affinity Real Estate Inc. participates in the Regional Multiple Listing Service of Minnesota, Inc Broker Reciprocity (sm) program, allowing us to display other broker's listings on our website. All properties are subject to prior sale, change or withdrawal.



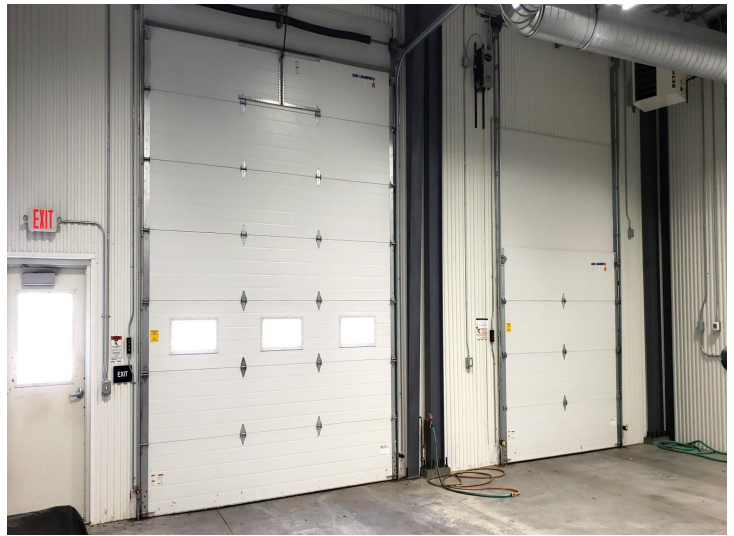
Call Affinity Real Estate

**218-237-3333**

[info@affinityrealestate.com](mailto:info@affinityrealestate.com)



Affinity Real Estate - 600 Park Avenue South - Park Rapids MN 56470



website: [www.AffinityRealEstate.com](http://www.AffinityRealEstate.com) | email: [info@affinityrealestate.com](mailto:info@affinityrealestate.com) | office: 218-237-3333 | fax:218-237-3377



**\$8**  
MLS 6671392 Commercial  
1018 Industrial Park Drive  
SE  
Bemidji MN 56601