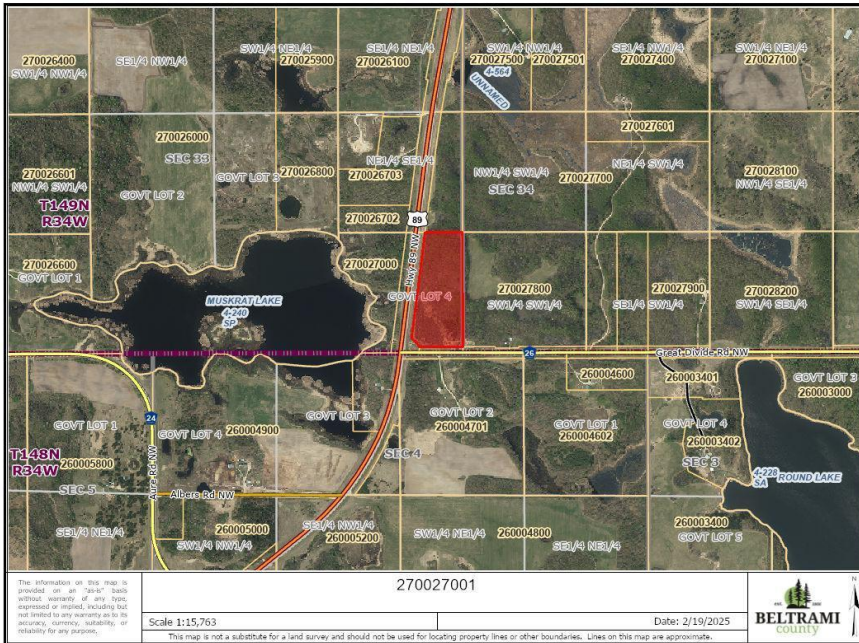




MLS 6671651 Lake Land

**\$105,000**



#### Description:

Don't miss this opportunity to own three densely wooded lots spanning over 26 acres, conveniently located just east of Puposky with access to either MN Hwy 89 on the west side of the property or County Road 26 on the south side of the property. Perfect for hunting or building your dream home!

#### Additional Details:

Lot Acres	26.15
Lot Dimensions	irregular
School District	31
Taxes	\$84
Taxes with Assessments	\$84
Tax Year	2024

#### Additional Features:

#### Driving Directions:

Intersection Hwy 26 and Hwy 89



Listed By:  
CENTURY 21 Atwood

Affinity Real Estate Inc. participates in the Regional Multiple Listing Service of Minnesota, Inc Broker Reciprocity (sm) program, allowing us to display other broker's listings on our website. All properties are subject to prior sale, change or withdrawal.



Call Affinity Real Estate

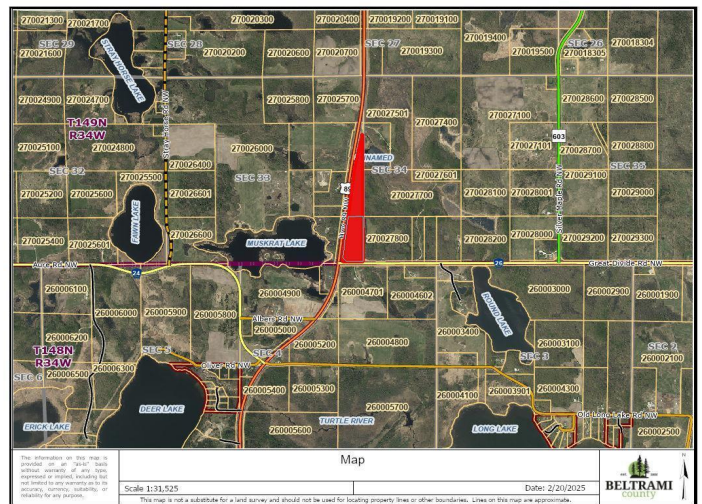
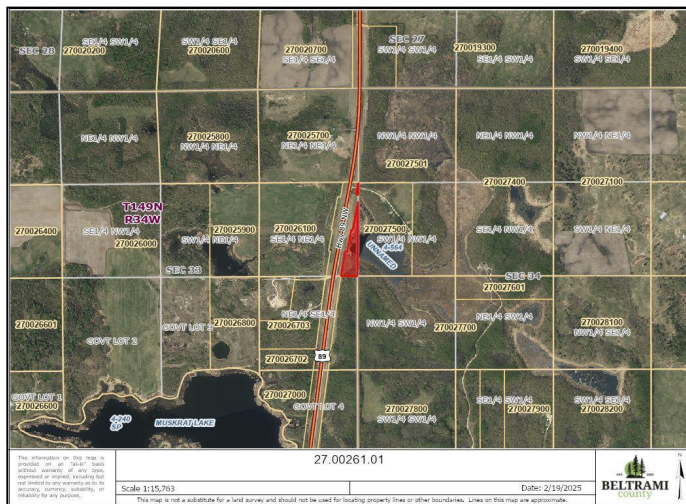
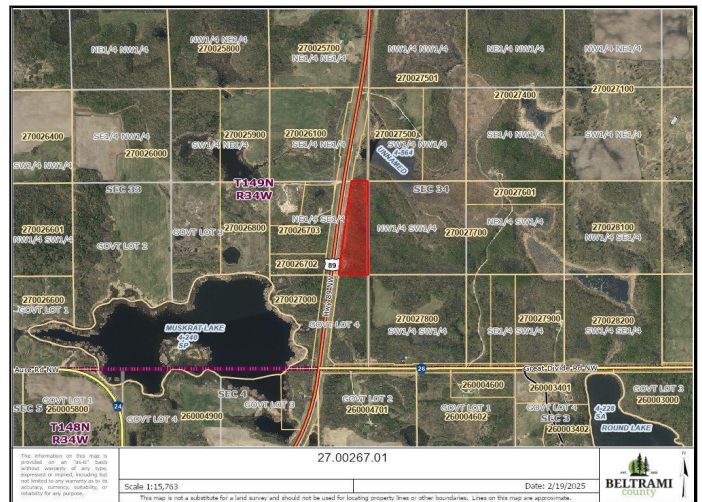
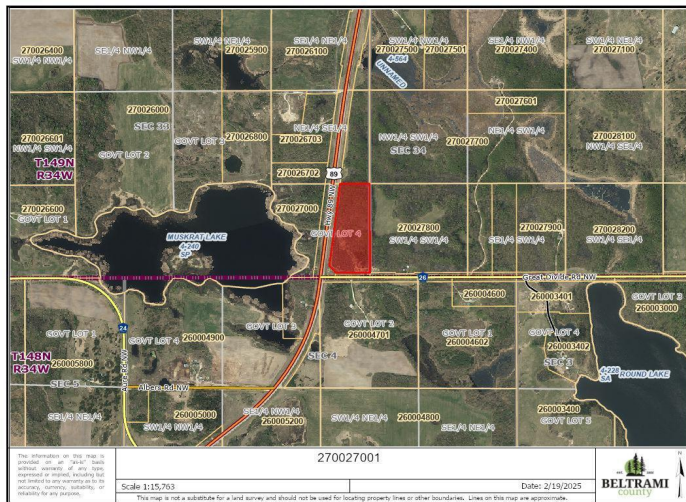
**218-237-3333**

[info@affinityrealestate.com](mailto:info@affinityrealestate.com)



Affinity Real Estate - 600 Park Avenue South - Park Rapids MN 56470





website: [www.AffinityRealEstate.com](http://www.AffinityRealEstate.com) | email: [info@affinityrealestate.com](mailto:info@affinityrealestate.com) | office: 218-237-3333 | fax: 218-237-3377

**Affinity**  
REAL ESTATE INC

**\$105,000**  
MLS 6671651 Lake Land  
TBD Hwy 89  
Puposky MN 56667





website: [www.AffinityRealEstate.com](http://www.AffinityRealEstate.com) | email: [info@affinityrealestate.com](mailto:info@affinityrealestate.com) | office: 218-237-3333 | fax:218-237-3377



**\$105,000**

MLS 6671651 Lake Land  
TBD Hwy 89  
Puposky MN 56667