



MLS 6672272 Residential

**\$189,000**

1,045 sq ft  
2 bedrooms  
1 baths

706 33rd Street  
Bemidji MN 56601

Status: Active

**Description:**

Well maintained 2 bedroom, 1 bath townhome in Vista North. Single attached garage. Enjoy the comforts of living in a great community. Let someone else plow the snow and mow the lawn. Great walking area near Sanford Health and North Country Park.

**Additional Details:**

Year Built	2001
Lot Acres	0.04
Lot Dimensions	45x59
Garage Stalls	1
School District	31
Taxes	\$1,881
Taxes with Assessments	\$1,881
Tax Year	2024

**Additional Features:**

**Basement:** None **Fuel:** Natural Gas **Garage:** 1 **Heat:** Forced Air **Sewer:** City Sewer/Connected **Water:** City Water/Connected **Air Conditioning:** Central Air

**Driving Directions:**

North on Irvine Ave, left on 30th St, right on Park Ave, left on 33rd St.



Listed By:  
Century 21 Dickinson

Affinity Real Estate Inc. participates in the Regional Multiple Listing Service of Minnesota, Inc Broker Reciprocity (sm) program, allowing us to display other broker's listings on our website. All properties are subject to prior sale, change or withdrawal.



Call Affinity Real Estate

**218-237-3333**

[info@affinityrealestate.com](mailto:info@affinityrealestate.com)



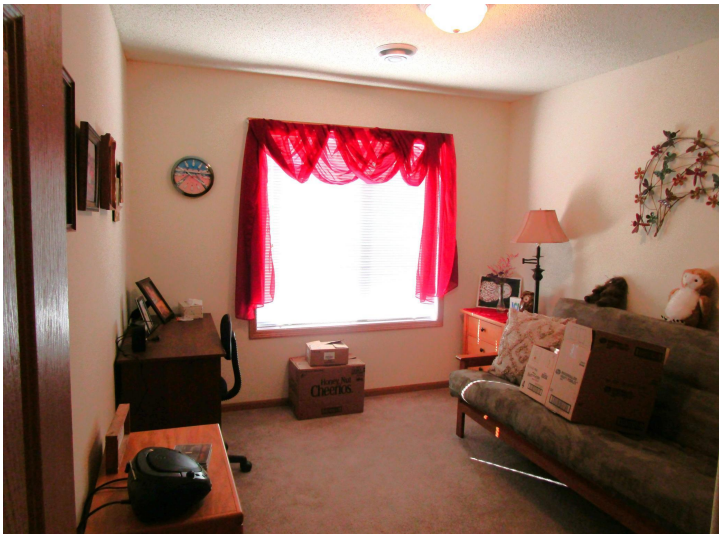
Affinity Real Estate - 600 Park Avenue South - Park Rapids MN 56470



website: [www.AffinityRealEstate.com](http://www.AffinityRealEstate.com) | email: [info@affinityrealestate.com](mailto:info@affinityrealestate.com) | office: 218-237-3333 | fax:218-237-3377

**Affinity**  
REAL ESTATE INC

**\$189,000**  
MLS 6672272 Residential  
706 33rd Street  
Bemidji MN 56601



website: [www.AffinityRealEstate.com](http://www.AffinityRealEstate.com) | email: [info@affinityrealestate.com](mailto:info@affinityrealestate.com) | office: 218-237-3333 | fax:218-237-3377

**Affinity**  
REAL ESTATE INC

**\$189,000**  
MLS 6672272 Residential  
706 33rd Street  
Bemidji MN 56601