



MLS 6672457 Residential

\$274,900

1,200 sq ft
4 bedrooms
1 baths

4340 County Road 1
Pine River MN 56474

Status: Pending

Description:

Welcome to this completely renovated home offering modern updates and 10 private acres of scenic land. Whether you're looking for a full-time home, a hunting retreat, or a private getaway, this property delivers quality, comfort, and outdoor adventure.

This 4-bedroom, 1-bathroom home has been updated from top to bottom with a brand-new roof, new flooring throughout, newer windows, and all-new stainless steel appliances. The home also boasts a brand-new Navien boiler system, ensuring efficient and reliable heating in every season.

Outdoor enthusiasts will appreciate the deer stand and direct access to thousands of acres of public land, making this a prime location for whitetail hunting. A spacious 24' x 36' garage and insulated 20' x 24' shop provide ample storage and workspace for vehicles, equipment, or hobbies. The blacktop road frontage allows for easy year-round access.

Conveniently located between Pine River and the Whitefish Chain of Lakes, this home offers the best of both worlds—seclusion and nature, with easy access to fishing, boating, and outdoor recreation.

Additional Details:

Year Built	1967
Lot Acres	10
Lot Dimensions	331x1320
Garage Stalls	3
School District	2174
Taxes	\$630
Taxes with Assessments	\$630
Tax Year	2024

Additional Features:

Basement: None **Fuel:** Electric, Propane **Garage:** 3 **Heat:** Baseboard, Boiler **Sewer:** Private Sewer, Tank with Drainage Field **Water:** Private, Well **Air Conditioning:** None

Driving Directions:

4 miles east of Pine River on C.R. #1 to 4340 on left.



Listed By:
eXp Realty

Affinity Real Estate Inc. participates in the Regional Multiple Listing Service of Minnesota, Inc Broker Reciprocity (sm) program, allowing us to display other broker's listings on our website. All properties are subject to prior sale, change or withdrawal.



Call Affinity Real Estate

218-237-3333

info@affinityrealestate.com



Affinity Real Estate - 600 Park Avenue South - Park Rapids MN 56470



website: www.AffinityRealEstate.com | email: info@affinityrealestate.com | office: 218-237-3333 | fax: 218-237-3377



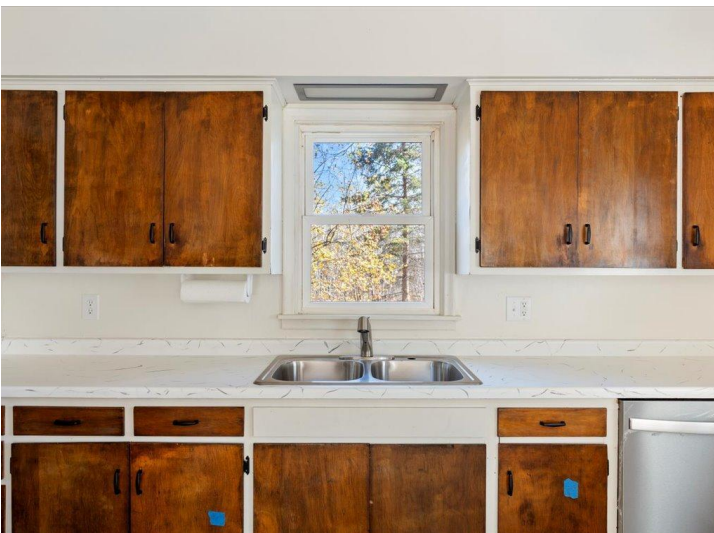
\$274,900
 MLS 6672457 Residential
 4340 County Road 1
 Pine River MN 56474



website: www.AffinityRealEstate.com | email: info@affinityrealestate.com | office: 218-237-3333 | fax: 218-237-3377

Affinity
REAL ESTATE INC

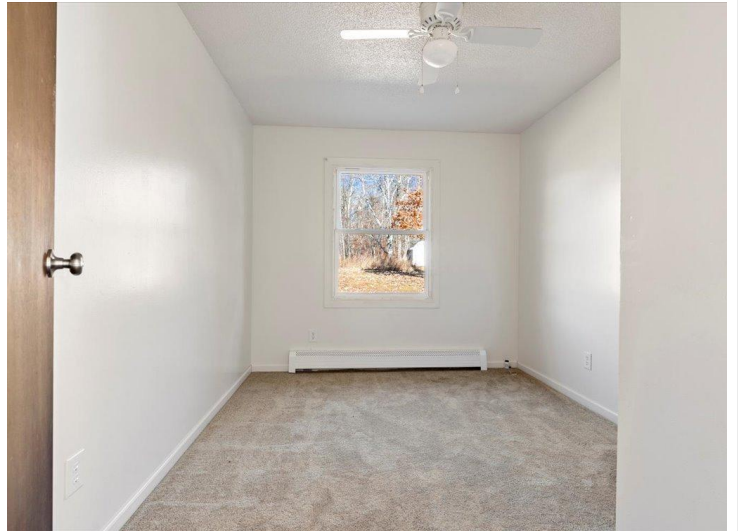
\$274,900
MLS 6672457 Residential
4340 County Road 1
Pine River MN 56474



website: www.AffinityRealEstate.com | email: info@affinityrealestate.com | office: 218-237-3333 | fax: 218-237-3377



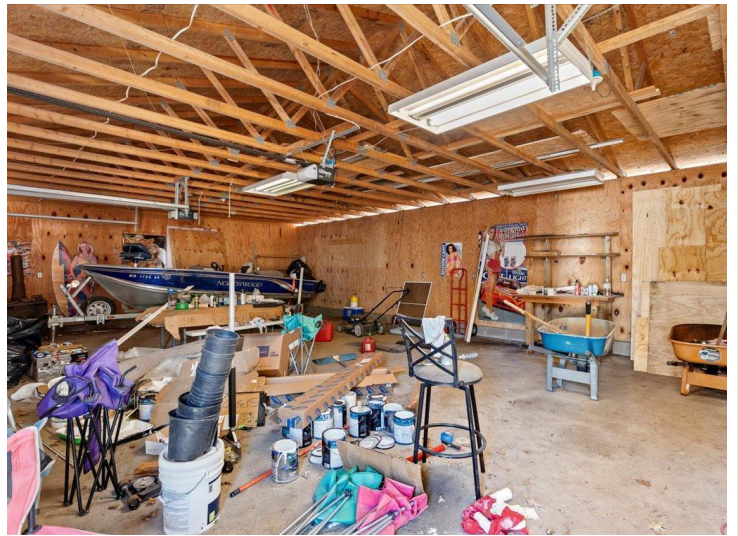
\$274,900
 MLS 6672457 Residential
 4340 County Road 1
 Pine River MN 56474



website: www.AffinityRealEstate.com | email: info@affinityrealestate.com | office: 218-237-3333 | fax: 218-237-3377



\$274,900
 MLS 6672457 Residential
 4340 County Road 1
 Pine River MN 56474



website: www.AffinityRealEstate.com | email: info@affinityrealestate.com | office: 218-237-3333 | fax: 218-237-3377



\$274,900
 MLS 6672457 Residential
 4340 County Road 1
 Pine River MN 56474



website: www.AffinityRealEstate.com | email: info@affinityrealestate.com | office: 218-237-3333 | fax: 218-237-3377

Affinity
REAL ESTATE INC

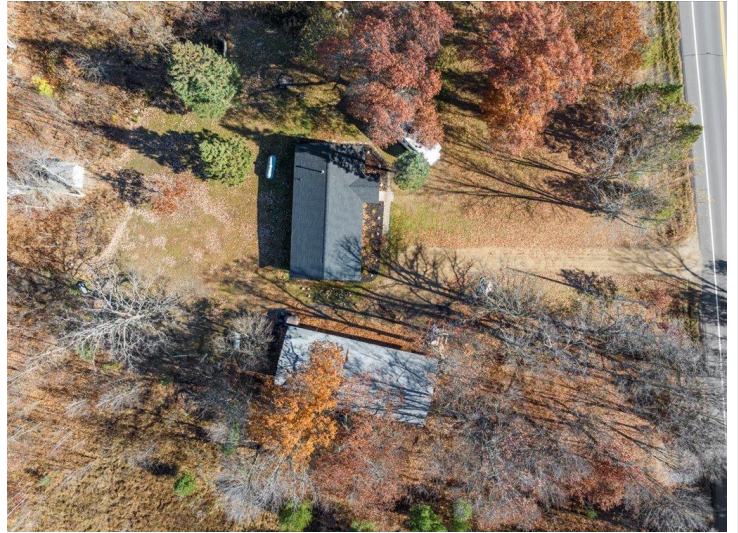
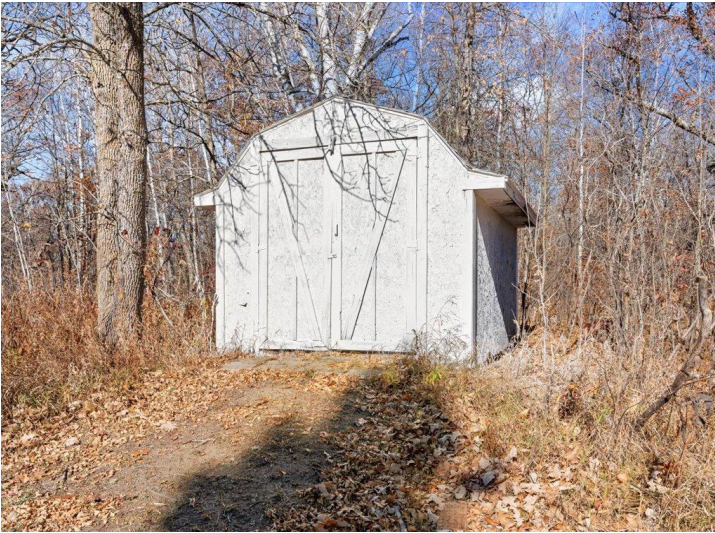
\$274,900
MLS 6672457 Residential
4340 County Road 1
Pine River MN 56474



website: www.AffinityRealEstate.com | email: info@affinityrealestate.com | office: 218-237-3333 | fax: 218-237-3377



\$274,900
 MLS 6672457 Residential
 4340 County Road 1
 Pine River MN 56474



website: www.AffinityRealEstate.com | email: info@affinityrealestate.com | office: 218-237-3333 | fax: 218-237-3377



\$274,900
 MLS 6672457 Residential
 4340 County Road 1
 Pine River MN 56474



website: www.AffinityRealEstate.com | email: info@affinityrealestate.com | office: 218-237-3333 | fax: 218-237-3377



\$274,900
MLS 6672457 Residential
4340 County Road 1
Pine River MN 56474