



MLS 6672543 Commercial

\$329,900

920 Washington Avenue
Bemidji MN 56601

Status: Active

Description:

Commercial building for sale in a great location on the South side of Bemidji. Sale includes a 2100 sq ft commercial building currently used for office space, a 16x20 storage building and a paved parking lot with 14 parking spaces. Bring your existing business or business ideas and make your dreams a reality! Zoned B-2, General Commercial.

Additional Details:

Year Built	2010
Lot Acres	0.6
Lot Dimensions	90x213
Garage Stalls	1
School District	31
Taxes	\$5,336
Taxes with Assessments	\$5,336
Tax Year	2024

Additional Features:

Fuel: Natural Gas **Garage:** 1 **Heat:** Forced Air **Sewer:** City Sewer/Connected **Water:** City Water - In Street

Driving Directions:

South on Washington Ave to 920 on East side of the road.



Listed By:
218 Real Estate

Affinity Real Estate Inc. participates in the Regional Multiple Listing Service of Minnesota, Inc Broker Reciprocity (sm) program, allowing us to display other broker's listings on our website. All properties are subject to prior sale, change or withdrawal.



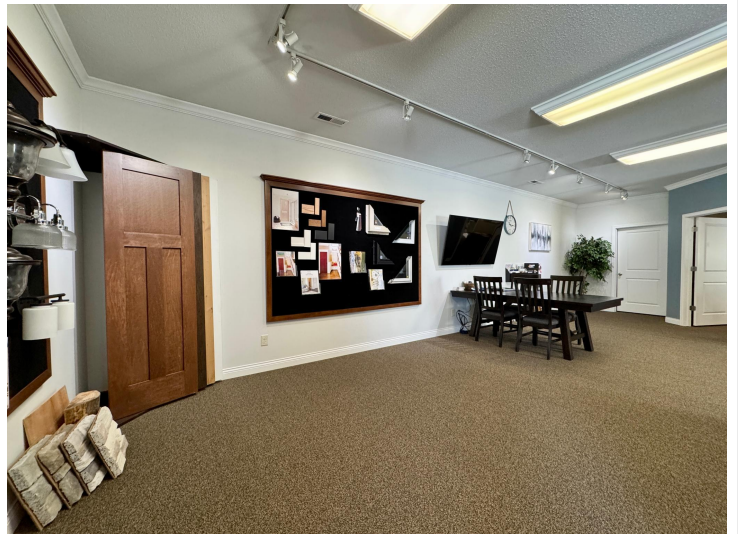
Call Affinity Real Estate

218-237-3333

info@affinityrealestate.com



Affinity Real Estate - 600 Park Avenue South - Park Rapids MN 56470



website: www.AffinityRealEstate.com | email: info@affinityrealestate.com | office: 218-237-3333 | fax: 218-237-3377



\$329,900
 MLS 6672543 Commercial
 920 Washington Avenue
 Bemidji MN 56601



website: www.AffinityRealEstate.com | email: info@affinityrealestate.com | office: 218-237-3333 | fax: 218-237-3377



\$329,900
MLS 6672543 Commercial
920 Washington Avenue
Bemidji MN 56601



website: www.AffinityRealEstate.com | email: info@affinityrealestate.com | office: 218-237-3333 | fax: 218-237-3377



\$329,900
MLS 6672543 Commercial
920 Washington Avenue
Bemidji MN 56601