



MLS 6673545 Residential

\$100,000

160 sq ft
0 bedrooms
0 baths

8713 Forest Cove
Pequot Lakes MN 56472

Status: Active

Description:

Nestled in the cove on the point on the North Arm of Lake Ossawinnamakee in Ideal Township. The long windy road that leads to this off-lake property. The area is filled with families, cabins, trees, and wildlife. Secluded lot near the end of a dead-end road, offers tranquility and peace, yet you are minutes from all the amenities the area has to offer. Minutes from Golf, Boating, Biking Trails, Skiing, Kayaking, Snowmobiling. Lot is prepped and ready for your RV, travel trailer, or your cabin. Close access to lakes and Paul Bunyan Bike Trails. Property features: Official county property survey is complete, Crow Wing County has approved building envelope. Crow Wing County Wetland Delineation complete during of survey. 10' x16' Cabin/Bunkhouse - Fully furnished with kitchenette, small fridge/freezer, water pump and large sink for fresh drinking water, two new twin beds and bedding, small desk with chair, rug and window treatments. Also has electrical outlets, ceiling fan and new sliding glass door. Freshly painted interior and exterior siding with a durable steel roof. Outdoor Shower-custom built cedar + corrugated metal walls with new propane outdoor water heater. The driveway consists of class 5 gravel and rocks. Lot has been tastefully cleared of numerous trees / lot cleared and excavated - ready for building or RV site Fire pit area with custom log rack, and accessories. Property address has been established with the county. Septic system plans have been professionally designed and soil testing completed and all has been approved by Crow Wing County. Raspberry patch with domestic variety + hundreds of wild raspberries on north side of property. 200 Amp Electrical Service has been assigned at the property corner. Tool shed 12' x 7' single slope with barn doors and transom windows Professional wildflower assessment performed by Crow Wing County with a complete recommendation for future plantings. Clear Lake public boat access is less than 1 mile and this lot is across the street from lakeshore property on Lake Ossawinnamakee.

Additional Details:

Year Built	2021
Lot Acres	1.18
Lot Dimensions	108x20x87x240x480x60x133x25
School District	186
Taxes	\$86
Taxes with Assessments	\$86
Tax Year	2024

Additional Features:



Listed By: **Think Minnesota Realty LLC**
 Heat: None Sewer: None Water: None Air Conditioning: None

Affinity Real Estate Inc. participates in the Regional Multiple Listing Service of Minnesota, Inc Broker Reciprocity (sm) program, allowing us to display other broker's listings on our website. All properties are subject to prior sale, change or withdrawal.



Call Affinity Real Estate

218-237-3333

info@affinityrealestate.com

MLS REALTOR on site

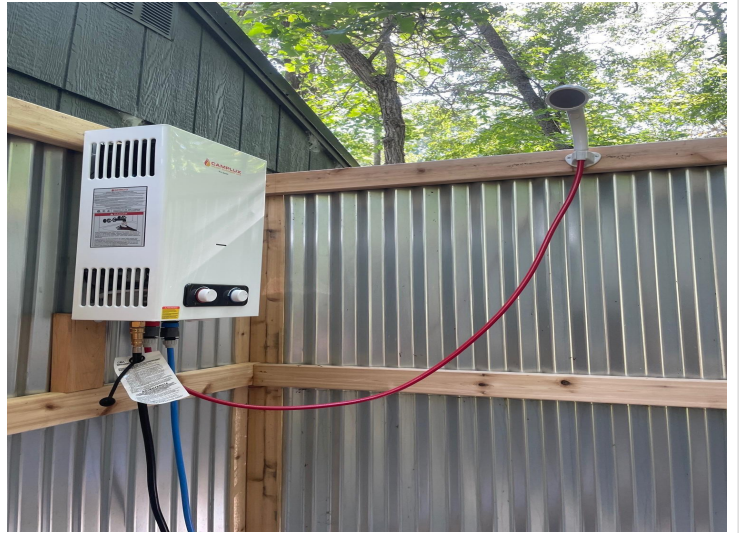
Affinity Real Estate - 600 Park Avenue South - Park Rapids MN 56470



website: www.AffinityRealEstate.com | email: info@affinityrealestate.com | office: 218-237-3333 | fax: 218-237-3377



\$100,000
MLS 6673545 Residential
8713 Forest Cove
Pequot Lakes MN 56472



website: www.AffinityRealEstate.com | email: info@affinityrealestate.com | office: 218-237-3333 | fax:218-237-3377



\$100,000
MLS 6673545 Residential
8713 Forest Cove
Pequot Lakes MN 56472



website: www.AffinityRealEstate.com | email: info@affinityrealestate.com | office: 218-237-3333 | fax:218-237-3377



\$100,000
MLS 6673545 Residential
8713 Forest Cove
Pequot Lakes MN 56472