



MLS 6673727 Residential

\$265,000

2,348 sq ft
3 bedrooms
3 baths

19000 County Road 47
Osage MN 56570

Status: Pending

Description:

Spacious 10 Acre Country Home south of Osage in Becker County. This house has all living facilities on one level. This home is well lit with natural sunlight. Enjoy country views from deck and the numerous windows. It has been recently renovated in 2018 with new electrical, plumbing, flooring, Pella windows, sheetrock, shingles, Siding, kitchen and more. Both levels have heated floors except garage. Plumbing is present for sinks in the Primary bath and laundry room. House is sold As Is. Sewer is Compliant, tested September 2025.

Additional Details:

Year Built	1968
Lot Acres	10
Lot Dimensions	1302x345x1302x345
Garage Stalls	3
School District	2286
Taxes	\$1,796
Taxes with Assessments	\$1,856
Tax Year	2024

Additional Features:

Basement: Finished, Walkout **Fuel:** Array **Garage:** 3 **Heat:** Forced Air, In-Floor Heating **Sewer:** Private Sewer, Septic System Compliant - Yes, Tank with Drainage Field **Water:** Drilled, Well **Air Conditioning:** Window Unit(s)

Driving Directions:

Go East on Hwy 34 from Park Rapids. Take a left on County Road 47. Go south on County Rd 47 for 5 miles. Property on right.



Listed By:
National Realty Guild

Affinity Real Estate Inc. participates in the Regional Multiple Listing Service of Minnesota, Inc Broker Reciprocity (sm) program, allowing us to display other broker's listings on our website. All properties are subject to prior sale, change or withdrawal.



Call Affinity Real Estate

218-237-3333

info@affinityrealestate.com



Affinity Real Estate - 600 Park Avenue South - Park Rapids MN 56470



website: www.AffinityRealEstate.com | email: info@affinityrealestate.com | office: 218-237-3333 | fax: 218-237-3377



\$265,000
MLS 6673727 Residential
19000 County Road 47
Osage MN 56570



website: www.AffinityRealEstate.com | email: info@affinityrealestate.com | office: 218-237-3333 | fax: 218-237-3377



\$265,000
 MLS 6673727 Residential
 19000 County Road 47
 Osage MN 56570



website: www.AffinityRealEstate.com | email: info@affinityrealestate.com | office: 218-237-3333 | fax: 218-237-3377



\$265,000
 MLS 6673727 Residential
 19000 County Road 47
 Osage MN 56570



website: www.AffinityRealEstate.com | email: info@affinityrealestate.com | office: 218-237-3333 | fax: 218-237-3377



\$265,000
 MLS 6673727 Residential
 19000 County Road 47
 Osage MN 56570

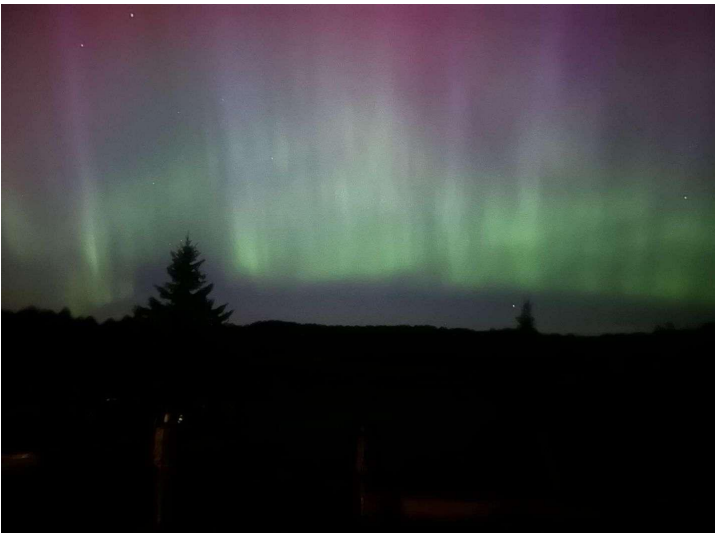
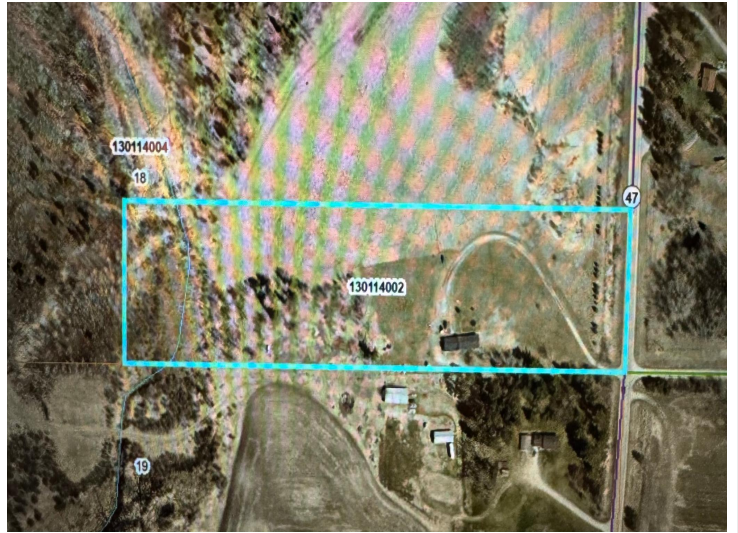


website: www.AffinityRealEstate.com | email: info@affinityrealestate.com | office: 218-237-3333 | fax: 218-237-3377

Affinity
REAL ESTATE INC

\$265,000

MLS 6673727 Residential
19000 County Road 47
Osage MN 56570



website: www.AffinityRealEstate.com | email: info@affinityrealestate.com | office: 218-237-3333 | fax: 218-237-3377



\$265,000
MLS 6673727 Residential
19000 County Road 47
Osage MN 56570