



MLS 6673834 Residential

**\$123,900**

792 sq ft  
2 bedrooms  
1 baths

1231 Madison Avenue  
Detroit Lakes MN 56501

Status: Active

**Description:**

2 bedroom 1 bath condo with low HOA's (\$150.00 mo) covers water, sewer, garbage, outdoor maintenance and insurance. Laundry on site. Lots of natural light with a large sliding glass door leading to outdoor patio. Good storage. Condo is in a very handy location close to schools and parks. Singl detached garage.

**Additional Details:**

Year Built	1975
Lot Acres	0.06
Lot Dimensions	2642
Garage Stalls	1
School District	22
Taxes	\$984
Taxes with Assessments	\$984
Tax Year	2024

**Additional Features:**

**Basement:** Crawl Space **Fuel:** Electric **Garage:** 1 **Heat:** Baseboard **Sewer:** City Sewer/Connected **Water:** City Water/Connected **Air Conditioning:** Wall Unit(s)

**Driving Directions:**

1231 Madison Ave. #313. Lower unit on the right when coming in the front door.



Listed By:  
Action Realty of Detroit Lakes

Affinity Real Estate Inc. participates in the Regional Multiple Listing Service of Minnesota, Inc Broker Reciprocity (sm) program, allowing us to display other broker's listings on our website. All properties are subject to prior sale, change or withdrawal.



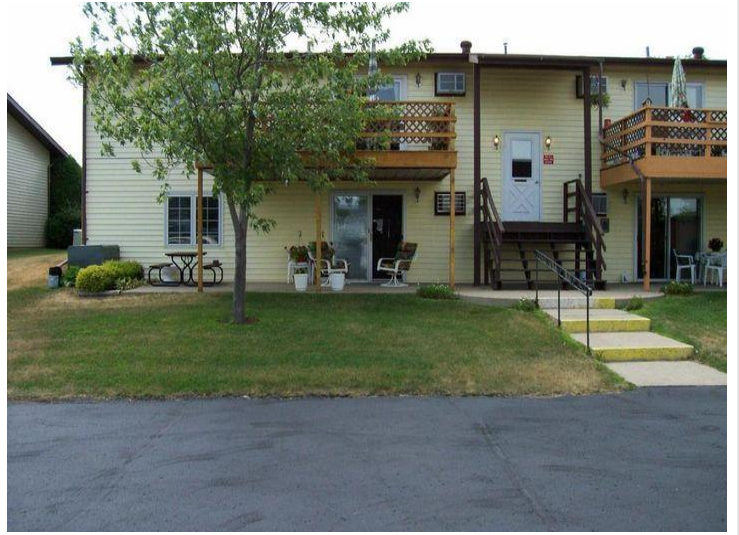
Call Affinity Real Estate

**218-237-3333**

[info@affinityrealestate.com](mailto:info@affinityrealestate.com)



Affinity Real Estate - 600 Park Avenue South - Park Rapids MN 56470



website: [www.AffinityRealEstate.com](http://www.AffinityRealEstate.com) | email: [info@affinityrealestate.com](mailto:info@affinityrealestate.com) | office: 218-237-3333 | fax: 218-237-3377

**Affinity**  
REAL ESTATE INC

**\$123,900**  
MLS 6673834 Residential  
1231 Madison Avenue  
Detroit Lakes MN 56501



website: [www.AffinityRealEstate.com](http://www.AffinityRealEstate.com) | email: [info@affinityrealestate.com](mailto:info@affinityrealestate.com) | office: 218-237-3333 | fax:218-237-3377



**\$123,900**  
MLS 6673834 Residential  
1231 Madison Avenue  
Detroit Lakes MN 56501