



MLS 6674008 Land

\$69,900

4.97 Acres

Raw Land

xxx Gould Gray Road
Brainerd MN 56401

Status: Pending

Description:

Are you looking for a slice of Up North living to build your dream cabin or shed? Then check out this property. This heavily wooded 5 acre lot is just minutes from downtown Brainerd MN. Gull and North Long lake are just minutes away. Love lake living but have nowhere to store all the toys? This lot would be perfect to build a large storage shed and have room to hunt and explore. Excellent hunting where you can bag that buck of a lifetime! No covenants and you can build on this lot as desired. Additional 5 acre adjoining lot also available if you are seeking more land.

Additional Details:

Lot Acres	4.97
Lot Dimensions	165x1308x165x1307
School District	181
Taxes	\$450
Taxes with Assessments	\$450
Tax Year	2025

Additional Features:

Driving Directions:

371 to North on Johnson Rd N to East on Gould Gay Road N



Listed By:
Distinctive Group, Inc

Affinity Real Estate Inc. participates in the Regional Multiple Listing Service of Minnesota, Inc Broker Reciprocity (sm) program, allowing us to display other broker's listings on our website. All properties are subject to prior sale, change or withdrawal.



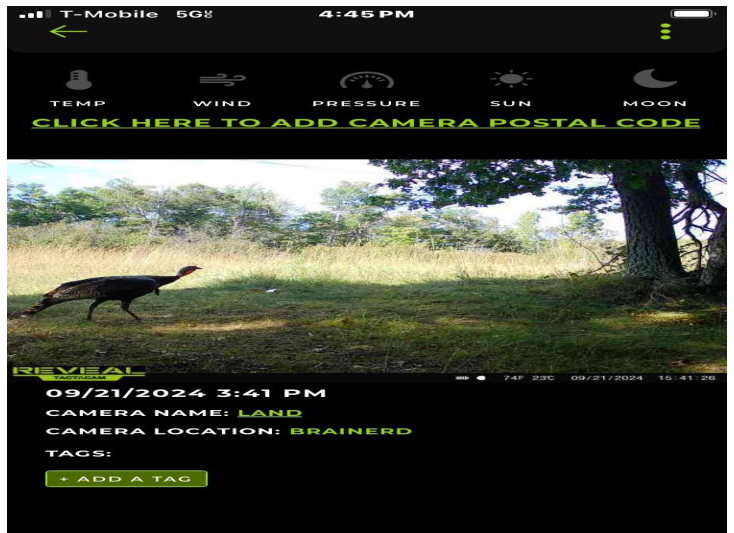
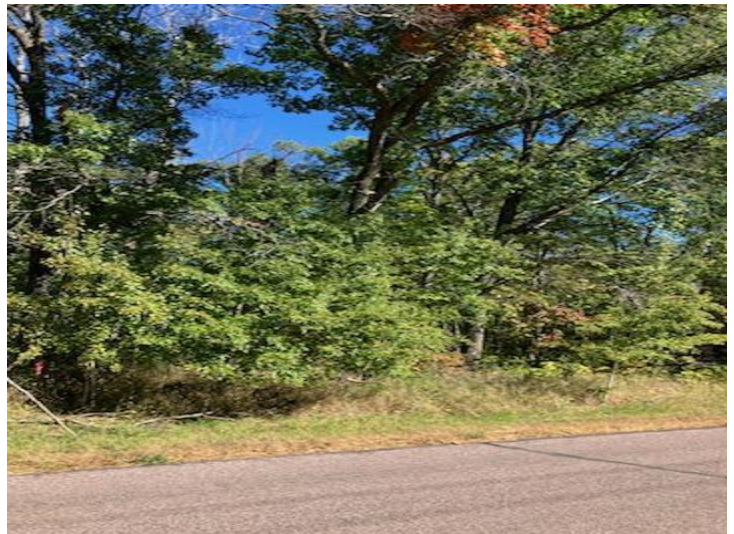
Call Affinity Real Estate

218-237-3333

info@affinityrealestate.com



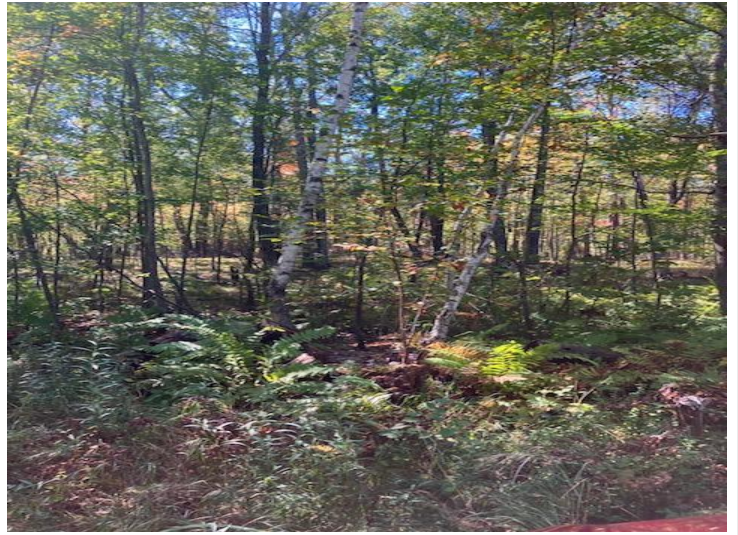
Affinity Real Estate - 600 Park Avenue South - Park Rapids MN 56470



website: www.AffinityRealEstate.com | email: info@affinityrealestate.com | office: 218-237-3333 | fax: 218-237-3377



\$69,900
 MLS 6674008 Land
 xxx Gould Gray Road
 Brainerd MN 56401



website: www.AffinityRealEstate.com | email: info@affinityrealestate.com | office: 218-237-3333 | fax: 218-237-3377



\$69,900

MLS 6674008 Land
xxx Gould Gray Road
Brainerd MN 56401



website: www.AffinityRealEstate.com | email: info@affinityrealestate.com | office: 218-237-3333 | fax: 218-237-3377



\$69,900
MLS 6674008 Land
xxx Gould Gray Road
Brainerd MN 56401

This e-mail and any attachment is intended to be read only by the intended recipient. This e-mail may be legally privileged or protected from disclosure by law. If you are not the intended recipient, any dissemination of this e-mail or any attachments is strictly prohibited, and you should refrain from reading this e-mail or examining any attachments. If you received this e-mail in error, please notify the sender immediately and delete this e-mail and any attachments. Thank you.



website: www.AffinityRealEstate.com | email: info@affinityrealestate.com | office: 218-237-3333 | fax:218-237-3377



\$69,900
MLS 6674008 Land
xxx Gould Gray Road
Brainerd MN 56401