



MLS 6674328 Lake Land

**\$119,900**

#### Description:

A privately owned lot located in a quiet area of Exclusive Whitebirch RV and Camping resort, with direct access to green space/common area directly behind lot and straight shot to comfort station 5. Included with the lot is a 2014 Shore Park Double Loft Park Model, 12'x20' Trex Deck and Railing with awning, 8'x10' Storage Shed and Parking for 4 cars or 3 cars/2 golf carts. 2014 Shore Park Model is in excellent condition and has been reinforced with a metal underbelly. Plantation shutters throughout, electric FP nice L-shaped sectional w/footrest sofa, Island/Cabinet Bistro table for six, beautiful Cherry cabinets throughout w upgraded countertops, which includes a large pantry, Pillow Top queen, full size toilet, bath/tub shower combo, 30Gal H2p heater. The double loft has 4 Twin beds and separate portable AC. Park model AC is on the exterior for quiet operation. Included in sale: 3 TV's (36" & 2-24"), all interior and deck furniture (table has tile top that is stored in the shed), fire table, blackstone grill and another grill. This won't last long, come take a look.

#### Additional Details:

Lot Acres	0.07
Lot Dimensions	40 x 80
School District	186
Taxes	\$485
Taxes with Assessments	\$510
Tax Year	2025

#### Additional Features:

#### Driving Directions:

From 7070 Dove St in Breezy Point and the gates of Whitebirch Camping Cluster 2 - once securing access thru gates, go forward to Rt on Whitebirch Way all the way to road curves Lt then Turn Rt onto Cougar Pass and then Lt onto Moose trail to #30584 Moose Trail on Lt



Listed By:  
Edina Realty, Inc.

Affinity Real Estate Inc. participates in the Regional Multiple Listing Service of Minnesota, Inc Broker Reciprocity (sm) program, allowing us to display other broker's listings on our website. All properties are subject to prior sale, change or withdrawal.



**Call Affinity Real Estate**

**218-237-3333**

**info@affinityrealestate.com**



**Affinity Real Estate - 600 Park Avenue South - Park Rapids MN 56470**



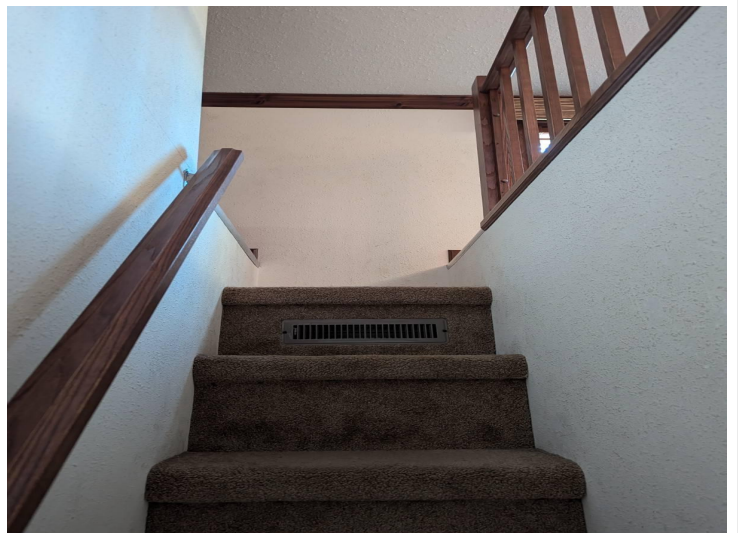
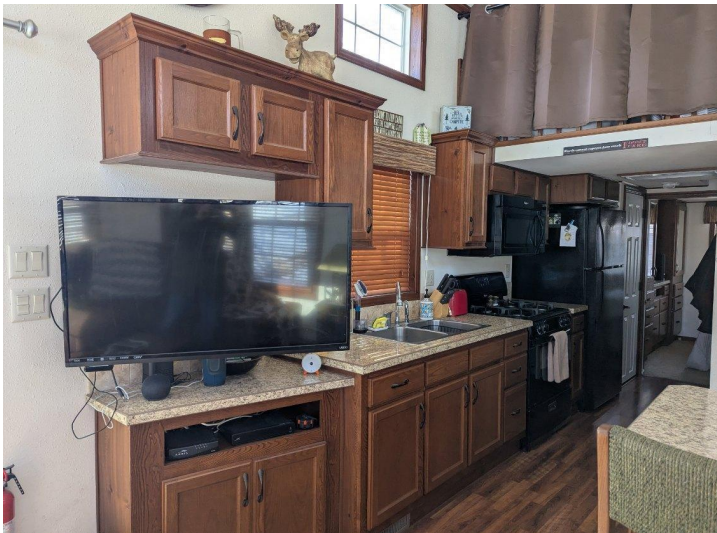


website: [www.AffinityRealEstate.com](http://www.AffinityRealEstate.com) | email: [info@affinityrealestate.com](mailto:info@affinityrealestate.com) | office: 218-237-3333 | fax: 218-237-3377

**Affinity**  
REAL ESTATE INC

**\$119,900**  
MLS 6674328 Lake Land  
30584 Moose Trail  
Pequot Lakes MN 56472



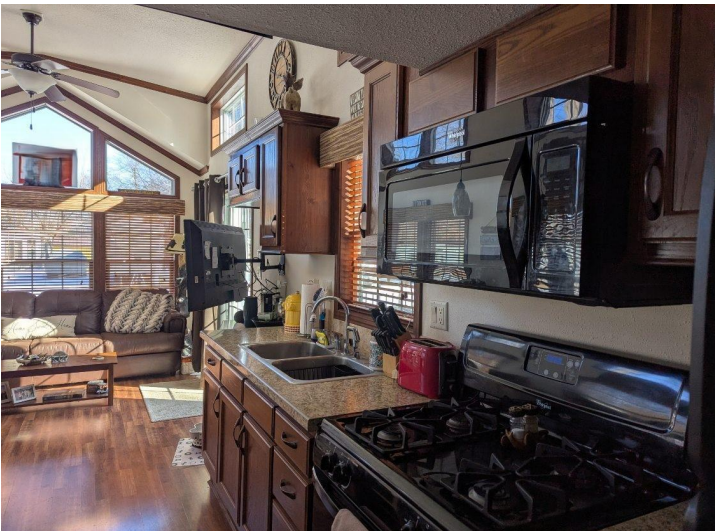
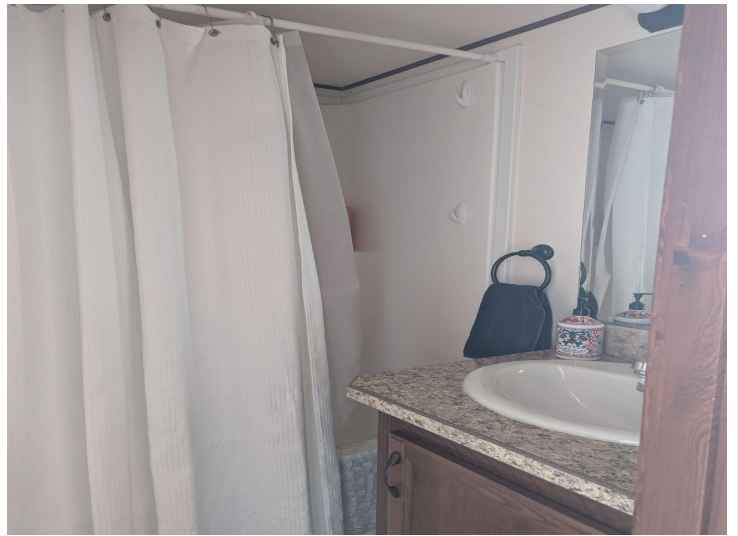


website: [www.AffinityRealEstate.com](http://www.AffinityRealEstate.com) | email: [info@affinityrealestate.com](mailto:info@affinityrealestate.com) | office: 218-237-3333 | fax: 218-237-3377

**Affinity**  
REAL ESTATE INC

**\$119,900**  
MLS 6674328 Lake Land  
30584 Moose Trail  
Pequot Lakes MN 56472





website: [www.AffinityRealEstate.com](http://www.AffinityRealEstate.com) | email: [info@affinityrealestate.com](mailto:info@affinityrealestate.com) | office: 218-237-3333 | fax: 218-237-3377

**Affinity**  
REAL ESTATE INC

**\$119,900**  
MLS 6674328 Lake Land  
30584 Moose Trail  
Pequot Lakes MN 56472





website: [www.AffinityRealEstate.com](http://www.AffinityRealEstate.com) | email: [info@affinityrealestate.com](mailto:info@affinityrealestate.com) | office: 218-237-3333 | fax: 218-237-3377

**Affinity**  
REAL ESTATE INC

**\$119,900**  
MLS 6674328 Lake Land  
30584 Moose Trail  
Pequot Lakes MN 56472





website: [www.AffinityRealEstate.com](http://www.AffinityRealEstate.com) | email: [info@affinityrealestate.com](mailto:info@affinityrealestate.com) | office: 218-237-3333 | fax: 218-237-3377



**\$119,900**

MLS 6674328 Lake Land  
30584 Moose Trail  
Pequot Lakes MN 56472