



MLS 6674615 Lake Land

**\$124,900**

#### Description:

Privately owned lot in a great location in cluster 2 of Whitebirch RV & Camping Resort. This lot has a large, common area/green space to the rear of lot, making it feel very private and comfy from the fire pit to the plush green grass next to the deck. A convenient walk across the street to comfort station 5 and the sanitation area. Included with lot: a warm modern 2017 Kropf double loft custom park model, 8'x16' deck w/awning along park model, 8'x10' storage shed, paved area for grill and river rock lined parking area for 3 cars. Park model is warm, inviting and modern. Alder cabinets throughout, cedar paneling, L-shaped sofa, recliner, electric fireplace w/32" TV, 4 swivel stools at kitchen counter, beautiful back splash in kitchen, dedicated pantry, large roomy bathroom with walk in shower, 2 built-in closets, queen bed. Double loft has queen size mattress and fullsize futon mattress. Other inclusions: All furniture inside park model, patio furniture on deck, 2 sets of 4 chairs, extra table, char grill, 2 bikes (man & woman's) in shed and foldable picnic table on side of shed. Bakeware, electric skillet, 2 crockpots, dishes, silverware, cooking utensils. 2007 Club Golf cart w/charger is also included. Selling almost turnkey!

#### Additional Details:

Lot Acres	0.08
Lot Dimensions	36x84x44x78
School District	186
Taxes	\$462
Taxes with Assessments	\$462
Tax Year	2025

#### Additional Features:

#### Driving Directions:

From 7070 Dove St in Breezy Point and the entrance to Whitebirch Cluster 2 - once securing access thru security gate with gate card, go forward to Rt on Whitebirch Way to end where road turns left onto Bear Claw Path to #30417 on Left.



Listed By:  
Edina Realty, Inc.

Affinity Real Estate Inc. participates in the Regional Multiple Listing Service of Minnesota, Inc Broker Reciprocity (sm) program, allowing us to display other broker's listings on our website. All properties are subject to prior sale, change or withdrawal.



**Call Affinity Real Estate**

**218-237-3333**

**info@affinityrealestate.com**



**Affinity Real Estate - 600 Park Avenue South - Park Rapids MN 56470**



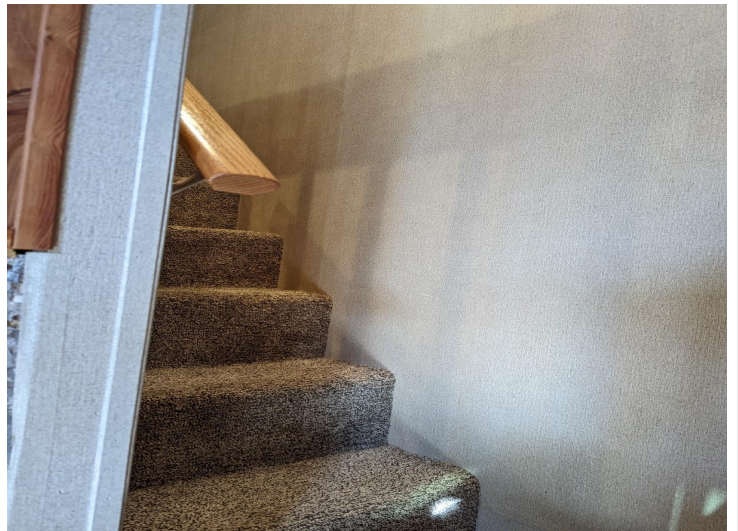


website: [www.AffinityRealEstate.com](http://www.AffinityRealEstate.com) | email: [info@affinityrealestate.com](mailto:info@affinityrealestate.com) | office: 218-237-3333 | fax: 218-237-3377

**Affinity**  
REAL ESTATE INC

**\$124,900**  
MLS 6674615 Lake Land  
30417 Bear Claw Path  
Pequot Lakes MN 56472





website: [www.AffinityRealEstate.com](http://www.AffinityRealEstate.com) | email: [info@affinityrealestate.com](mailto:info@affinityrealestate.com) | office: 218-237-3333 | fax: 218-237-3377

**Affinity**  
REAL ESTATE INC

**\$124,900**  
MLS 6674615 Lake Land  
30417 Bear Claw Path  
Pequot Lakes MN 56472





website: [www.AffinityRealEstate.com](http://www.AffinityRealEstate.com) | email: [info@affinityrealestate.com](mailto:info@affinityrealestate.com) | office: 218-237-3333 | fax: 218-237-3377

**Affinity**  
REAL ESTATE INC

**\$124,900**  
MLS 6674615 Lake Land  
30417 Bear Claw Path  
Pequot Lakes MN 56472





website: [www.AffinityRealEstate.com](http://www.AffinityRealEstate.com) | email: [info@affinityrealestate.com](mailto:info@affinityrealestate.com) | office: 218-237-3333 | fax: 218-237-3377

**Affinity**  
REAL ESTATE INC

**\$124,900**

MLS 6674615 Lake Land  
30417 Bear Claw Path  
Pequot Lakes MN 56472





website: [www.AffinityRealEstate.com](http://www.AffinityRealEstate.com) | email: [info@affinityrealestate.com](mailto:info@affinityrealestate.com) | office: 218-237-3333 | fax: 218-237-3377

**Affinity**  
REAL ESTATE INC

**\$124,900**  
MLS 6674615 Lake Land  
30417 Bear Claw Path  
Pequot Lakes MN 56472





website: [www.AffinityRealEstate.com](http://www.AffinityRealEstate.com) | email: [info@affinityrealestate.com](mailto:info@affinityrealestate.com) | office: 218-237-3333 | fax: 218-237-3377



**\$124,900**  
MLS 6674615 Lake Land  
30417 Bear Claw Path  
Pequot Lakes MN 56472