



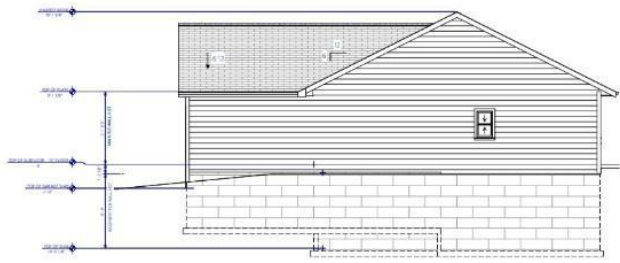
MLS 6674692 Residential

**\$325,000**

1,422 sq ft  
3 bedrooms  
2 baths

42199 County 36  
Laporte MN 56461

Status: Active



NORTH ELEVATION



SOUTH ELEVATION

#### Description:


Under Construction - Customize Your Dream Home! This stunning new build is nestled in the tall pines on a spacious 3.5-acre lot. Unique opportunity to choose their own amenities and colors. Located just off a paved road, this home provides loads of privacy and convenience, with easy access to the cities of Bemidji and Walker, each just a 20-minute drive away. Enjoy the beautiful drive to your new home and the tranquility that comes with living in such a serene setting. Features: 9-foot ceilings on both the main and lower levels, a large welcoming entryway, a covered front porch area perfect for relaxing, and patio doors leading to the backyard off the kitchen. The spacious kitchen boasts a large pantry, and the open, airy floor plan provides plenty of room for comfortable living. Large attached garage with 12 foot ceiling in the center. The exterior will have LP Smart Siding. Choose your color! Insulated Concrete Forms for the foundation. The lower level includes two bedrooms with egress windows, which will be framed in only unless changed between the builder and the buyer. Buyers have the option to work out the details with the builder to complete these bedrooms, or they can choose to have the seller finish the lower level entirely at an additional cost. The builder is also willing to sell the project as is to someone interested in taking on a project, with the price depending on how far along the construction is at the time of the offer.

This is a rare find—a new construction on a large, wooded lot. Don't miss out on this exceptional opportunity to create your dream home in a picturesque location. Learn more and schedule a viewing!

Finally, convenience, with easy access to the cities of Bemidji and Walker, each just 20-minute away. Enjoy the beautiful drive to your new home and the tranquility that comes with living in such a serene setting. Please note: The garage is 28x30 (not by 40 as indicated in the posted floor plan).

#### Additional Details:

Year Built	2025
Lot Acres	3.5
Lot Dimensions	279x568
Garage Stalls	2
School District	31
Taxes	\$304
Taxes with Assessments	\$304
Tax Year	2024



Listed By:  
Headwaters Realty Services LLC

**Basement:** Insulating Concrete Forms **Fuel:** Propane **Garage:** 2 **Heat:** Forced Air **Sewer:** Septic System **Compliant:** Yes **Water:** Well **Air Conditioning:** Central Air

Service of Minnesota, Inc Broker Reciprocity (sm) program, allowing us to display other broker's listings on our website. All properties are subject to prior sale, change or withdrawal.

**Driving Directions:**  
From Bemidji: MN 197 S, Left onto Co Hwy 9, Right onto Hwy 36 to property.



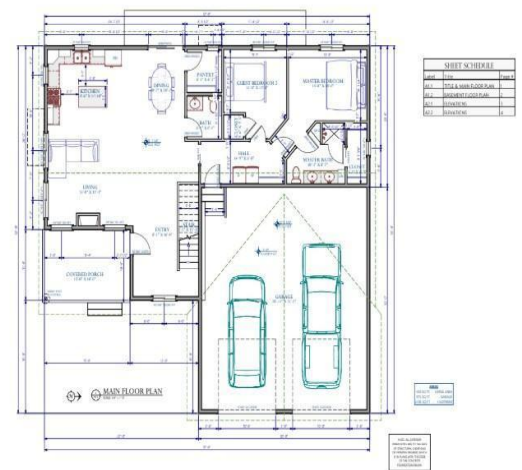
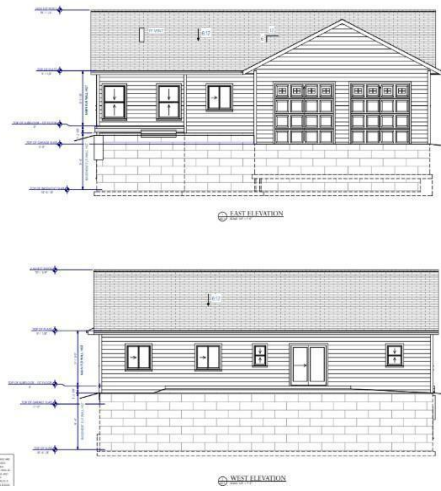
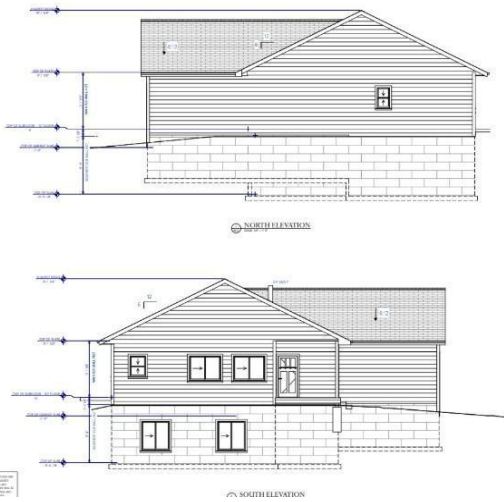
Call Affinity Real Estate

**218-237-3333**

[info@affinityrealestate.com](mailto:info@affinityrealestate.com)



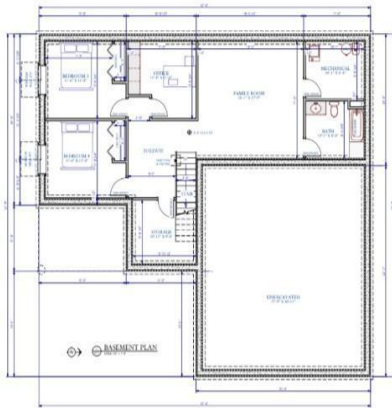
Affinity Real Estate - 600 Park Avenue South - Park Rapids MN 56470



website: [www.AffinityRealEstate.com](http://www.AffinityRealEstate.com) | email: [info@affinityrealestate.com](mailto:info@affinityrealestate.com) | office: 218-237-3333 | fax: 218-237-3377



**\$325,000**  
MLS 6674692 Residential  
42199 County 36  
Laporte MN 56461



ALL DIMENSIONS ARE IN FEET AND INCHES. DIMENSIONS ARE GIVEN TO THE CENTER OF THE WALL UNLESS OTHERWISE NOTED. DIMENSIONS ARE GIVEN TO THE CENTER OF THE WALL UNLESS OTHERWISE NOTED. DIMENSIONS ARE GIVEN TO THE CENTER OF THE WALL UNLESS OTHERWISE NOTED.

VIEW 6

website: [www.AffinityRealEstate.com](http://www.AffinityRealEstate.com) | email: [info@affinityrealestate.com](mailto:info@affinityrealestate.com) | office: 218-237-3333 | fax:218-237-3377



**\$325,000**  
MLS 6674692 Residential  
42199 County 36  
Laporte MN 56461