



MLS 6674753 Lake Home

\$385,000

1,232 sq ft
2 bedrooms
2 baths

34306 Twin Island Lane
Dent MN 56528

Waterfront: McDonald

Status: Active

Description:

Nestled amidst the serene landscapes of McDonald Lake, experience the beauty of nature and great views. The natural shoreline offers over 300+ ft of lakeshore and a private area for having bonfires.

McDonald lake provides endless opportunities for relaxation and a sandbar between McDonald and Big McDonald to gather for lake fun. This 2 bedroom, 2 bathroom home, sits on 2.5 acres. New updates include 40x32 Pole building, spray foam insulation, 10' sidewalls, Landscaping, propane free standing stove/fireplace, water softener, updated electrical for off peak system. Plenty of room to roam.

Additional Details:

Year Built	1978
Lot Acres	2.52
Lot Dimensions	Irregular
Garage Stalls	3
School District	549
Taxes	\$1,507
Taxes with Assessments	\$1,592
Tax Year	2024

Additional Features:

Basement: Crawl Space **Fuel:** Electric, Propane **Garage:** 3 **Heat:** Dual, Fireplace(s) **Sewer:** Septic System Compliant - Yes **Water:** Well **Air Conditioning:** Central Air

Driving Directions:

From 108 go North on Engstrom Beach Rd and follow the signs to home.



Listed By:
Trilogy Real Estate

Affinity Real Estate Inc. participates in the Regional Multiple Listing Service of Minnesota, Inc Broker Reciprocity (sm) program, allowing us to display other broker's listings on our website. All properties are subject to prior sale, change or withdrawal.



Call Affinity Real Estate

218-237-3333

info@affinityrealestate.com



Affinity Real Estate - 600 Park Avenue South - Park Rapids MN 56470



website: www.AffinityRealEstate.com | email: info@affinityrealestate.com | office: 218-237-3333 | fax:218-237-3377



\$385,000
MLS 6674753 Lake Home
34306 Twin Island Lane
Dent MN 56528



website: www.AffinityRealEstate.com | email: info@affinityrealestate.com | office: 218-237-3333 | fax: 218-237-3377

Affinity
REAL ESTATE INC

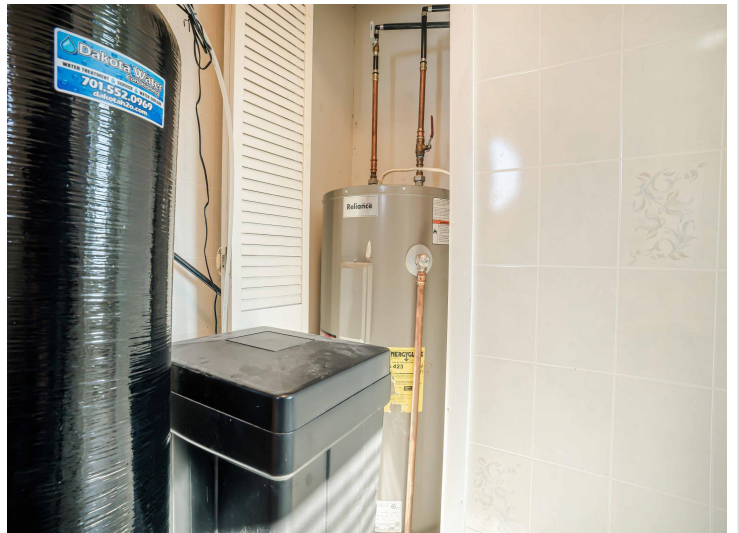
\$385,000
MLS 6674753 Lake Home
34306 Twin Island Lane
Dent MN 56528



website: www.AffinityRealEstate.com | email: info@affinityrealestate.com | office: 218-237-3333 | fax: 218-237-3377

Affinity
REAL ESTATE INC

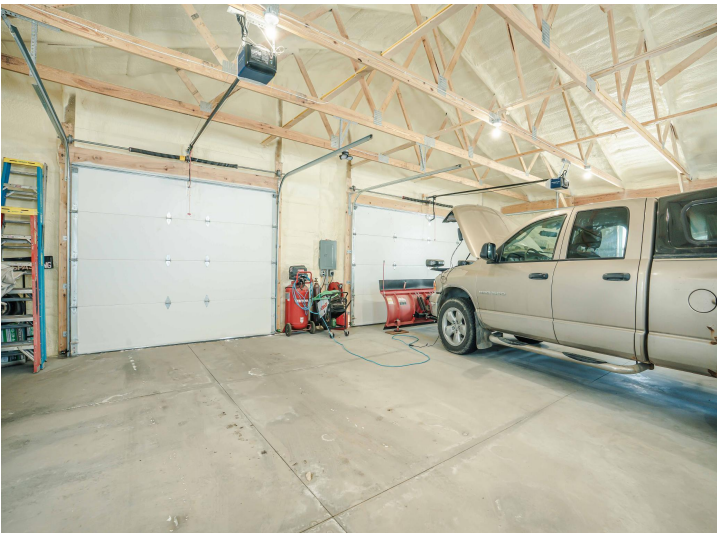
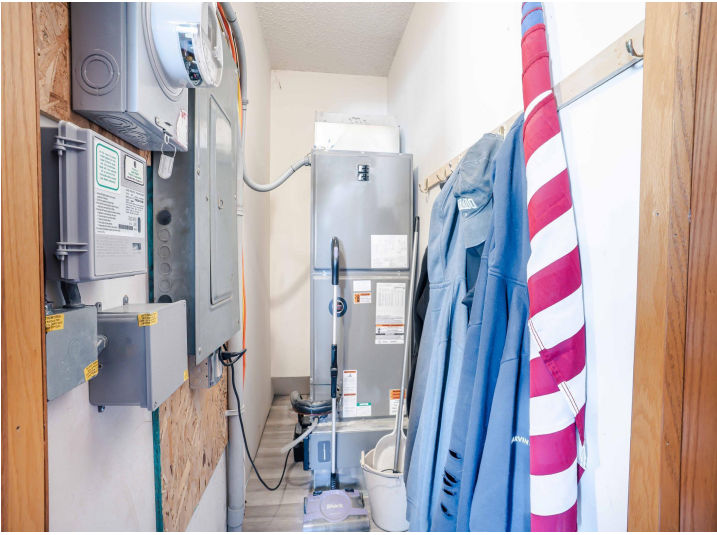
\$385,000
MLS 6674753 Lake Home
34306 Twin Island Lane
Dent MN 56528



website: www.AffinityRealEstate.com | email: info@affinityrealestate.com | office: 218-237-3333 | fax: 218-237-3377

Affinity
REAL ESTATE INC

\$385,000
MLS 6674753 Lake Home
34306 Twin Island Lane
Dent MN 56528



website: www.AffinityRealEstate.com | email: info@affinityrealestate.com | office: 218-237-3333 | fax:218-237-3377



\$385,000
MLS 6674753 Lake Home
34306 Twin Island Lane
Dent MN 56528



website: www.AffinityRealEstate.com | email: info@affinityrealestate.com | office: 218-237-3333 | fax:218-237-3377



\$385,000
MLS 6674753 Lake Home
34306 Twin Island Lane
Dent MN 56528



website: www.AffinityRealEstate.com | email: info@affinityrealestate.com | office: 218-237-3333 | fax:218-237-3377



\$385,000
MLS 6674753 Lake Home
34306 Twin Island Lane
Dent MN 56528