



MLS 6675019 Lake Land

\$230,000

Description:

RARE LAKEFRONT LOT AVAILABLE! This is a one-of-a-kind opportunity to own 2.3 acres with 150 feet of pristine shoreline on White Earth Lake, one of Minnesota's clearest lakes known for its exceptional walleye fishing, boating, and swimming. This property offers the perfect setting for a lakeside retreat. The shoreline features a sandy, hard-bottom beach, ideal for enjoying the water. In addition to the stunning waterfront, the property includes a MINIMUM of a 2,900 sq. ft. buildable area on the waterfront lot, providing the perfect space for a custom lake home. A spacious 16,000 sq. ft. buildable area on the backlot allows for additional possibilities, whether for a guest house, storage, or recreational space. Located just minutes from the coveted Cedar Crest Resort, this rare find won't last long. Don't miss your chance to own a piece of lakefront paradise! ****NOTE:** Buildable square footage is an estimate and the minimum possibility. Variances can be granted upon approval from Becker County Zoning.

Additional Details:

Lot Acres	2.3
Lot Dimensions	TBD
School District	435
Taxes	\$1,902
Taxes with Assessments	\$1,902
Tax Year	2024

Additional Features:

Driving Directions:

From Detroit Lakes heading North, turn right on 390th St for 10 mi, turn left onto 387th St for roughly 6.5 miles. Property will be posted.



Listed By:
REALTY XPERTS

Affinity Real Estate Inc. participates in the Regional Multiple Listing Service of Minnesota, Inc Broker Reciprocity (sm) program, allowing us to display other broker's listings on our website. All properties are subject to prior sale, change or withdrawal.



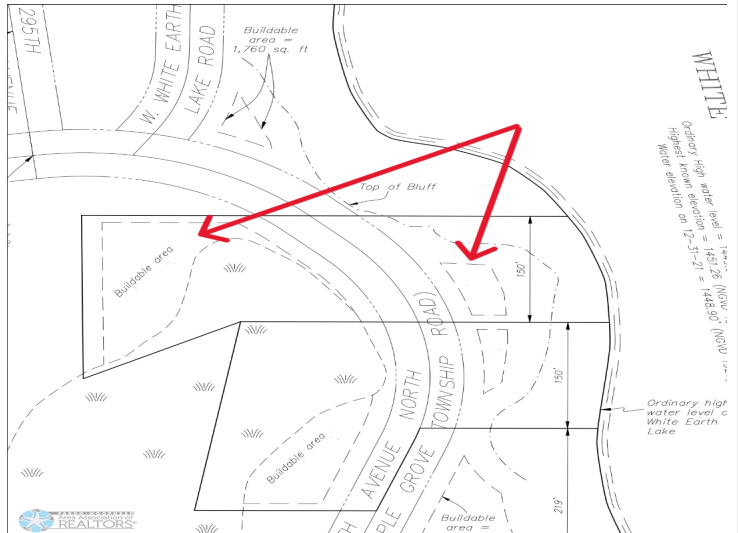
Call Affinity Real Estate

218-237-3333

info@affinityrealestate.com



Affinity Real Estate - 600 Park Avenue South - Park Rapids MN 56470



Page 2 of 2