



MLS 6675261 Lake Home

**\$409,500**

1,204 sq ft  
2 bedrooms  
2 baths

10890 County Rd 34 NW  
Alexandria MN 56308

Waterfront: Ida

Status: Active

#### Description:

On the shores of Lake Ida you will find the most quaint cabin, with western views. This cabin was built to be a year round home, suitable for small sustainable living. Intricately designed with every detail creating function and flow. The end to end views, the wall of windows featuring panoramic views of Lake Ida to the designer kitchen and granite counter tops, to the tucked in breakfast bar, to the heated tiles floors, every detail was noted and perfectly planned. The loft features additional living space, along with sleeping and office-ing area. The down stairs offers an owner's quarters, a whole level to yourself, with a walk-in tile shower, double sinks, heated tile floors, and more expansive lake views. This cabin/home is sure to please. Everything is thought out, all the way down to the additional organizers in the cabinets. This little lake home comes with some really cool additional features. It is a cooperative, so expenses are shared, you own your own dock, there is a community fish cleaning house, 1/8th share in 17.85 acres across the road, that has a Morton building for storage, place to winter your boat, store your boat trailer, community garden and walking space. Along with the shared amenities, the cooperative is complete with 8 cabins, shared well and city sewer. Come see what all the fuss is about. Great things do come in small packages! The association/co-op dues are not typically \$259/mo. a new well and lift pump were just and installed and which will be paid off soon. Generally the dues run about \$175/mo.

#### Additional Details:

Year Built	2019
Lot Acres	2.37
Lot Dimensions	344 267 316 394
School District	206
Taxes	\$2,685
Taxes with Assessments	(unreported)
Tax Year	2024

#### Additional Features:

**Fuel:** Propane **Heat:** Forced Air, Heat Pump, Radiant Floor

#### Driving Directions:

From Alex go North on Hwy 29, take a left on County Rd 42 NE, continue straight until it turns into County Rd 34 NW, Property is on the left. Morton building shed is on the right



Listed By:  
Real Estate by Jo, LLC

Affinity Real Estate Inc. participates in the Regional Multiple Listing Service of Minnesota, Inc Broker Reciprocity (sm) program, allowing us to display other broker's listings on our website. All properties are subject to prior sale, change or withdrawal.



**Call Affinity Real Estate**

**218-237-3333**

**info@affinityrealestate.com**



**Affinity Real Estate - 600 Park Avenue South - Park Rapids MN 56470**





website: [www.AffinityRealEstate.com](http://www.AffinityRealEstate.com) | email: [info@affinityrealestate.com](mailto:info@affinityrealestate.com) | office: 218-237-3333 | fax: 218-237-3377



**\$409,500**  
 MLS 6675261 Lake Home  
 10890 County Rd 34 NW  
 Alexandria MN 56308





website: [www.AffinityRealEstate.com](http://www.AffinityRealEstate.com) | email: [info@affinityrealestate.com](mailto:info@affinityrealestate.com) | office: 218-237-3333 | fax: 218-237-3377



**\$409,500**  
 MLS 6675261 Lake Home  
 10890 County Rd 34 NW  
 Alexandria MN 56308



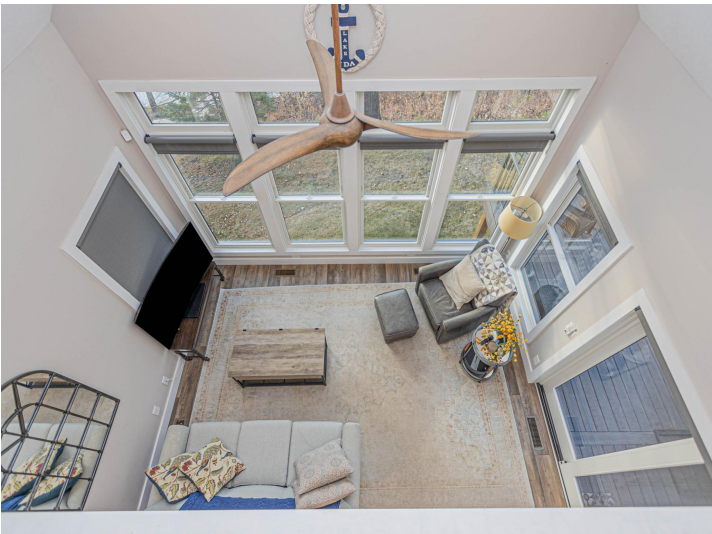


website: [www.AffinityRealEstate.com](http://www.AffinityRealEstate.com) | email: [info@affinityrealestate.com](mailto:info@affinityrealestate.com) | office: 218-237-3333 | fax: 218-237-3377



**\$409,500**  
 MLS 6675261 Lake Home  
 10890 County Rd 34 NW  
 Alexandria MN 56308





website: [www.AffinityRealEstate.com](http://www.AffinityRealEstate.com) | email: [info@affinityrealestate.com](mailto:info@affinityrealestate.com) | office: 218-237-3333 | fax: 218-237-3377

**Affinity**  
REAL ESTATE INC

**\$409,500**  
MLS 6675261 Lake Home  
10890 County Rd 34 NW  
Alexandria MN 56308



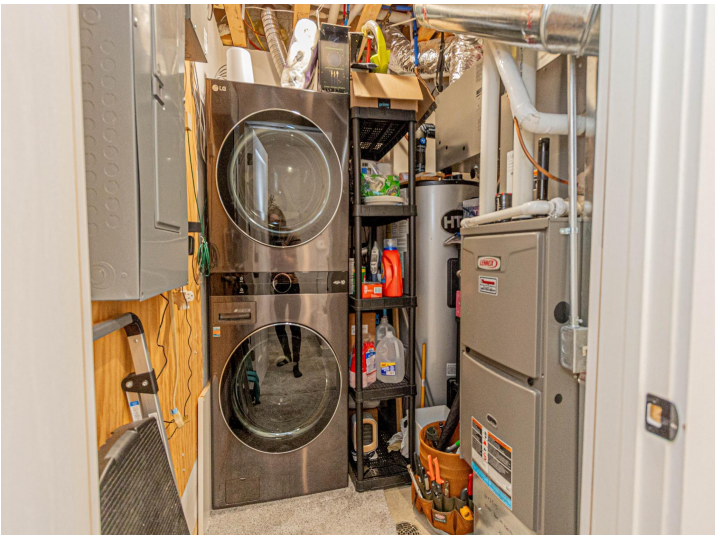


website: [www.AffinityRealEstate.com](http://www.AffinityRealEstate.com) | email: [info@affinityrealestate.com](mailto:info@affinityrealestate.com) | office: 218-237-3333 | fax: 218-237-3377



**\$409,500**  
 MLS 6675261 Lake Home  
 10890 County Rd 34 NW  
 Alexandria MN 56308





website: [www.AffinityRealEstate.com](http://www.AffinityRealEstate.com) | email: [info@affinityrealestate.com](mailto:info@affinityrealestate.com) | office: 218-237-3333 | fax: 218-237-3377



**\$409,500**  
MLS 6675261 Lake Home  
10890 County Rd 34 NW  
Alexandria MN 56308





website: [www.AffinityRealEstate.com](http://www.AffinityRealEstate.com) | email: [info@affinityrealestate.com](mailto:info@affinityrealestate.com) | office: 218-237-3333 | fax: 218-237-3377



**\$409,500**  
 MLS 6675261 Lake Home  
 10890 County Rd 34 NW  
 Alexandria MN 56308





website: [www.AffinityRealEstate.com](http://www.AffinityRealEstate.com) | email: [info@affinityrealestate.com](mailto:info@affinityrealestate.com) | office: 218-237-3333 | fax: 218-237-3377



**\$409,500**

MLS 6675261 Lake Home  
10890 County Rd 34 NW  
Alexandria MN 56308