



MLS 6675288 Residential

**\$329,000**

1,904 sq ft  
3 bedrooms  
2 baths

23179 County 80  
Nevis MN 56467

Status: Pending

**Description:**

Nestled on just over two acres with majestic pine trees, this charming 3-bedroom, 2-bathroom home offers a tranquil retreat just across the road from the picturesque Lake Belle Taine. Recently updated, the home boasts a new roof, fresh flooring throughout, interior and exterior paint, and a modern kitchen. A detached double garage and a spacious storage shed provide ample room for storage, making this property a perfect blend of comfort and convenience.

**Additional Details:**

Year Built	1969
Lot Acres	2.11
Lot Dimensions	204x446x255x481
Garage Stalls	2
School District	308
Taxes	\$1,050
Taxes with Assessments	\$1,260
Tax Year	2024

**Additional Features:**

**Basement:** Block, Daylight/Lookout Windows, Egress Window(s), Finished **Fuel:** Electric, Propane, Wood **Garage:** 2 **Heat:** Baseboard, Dual, Forced Air, Fireplace(s) **Sewer:** Tank with Drainage Field **Water:** Drilled, Well **Air Conditioning:** Central Air

**Driving Directions:**

From 34/71 in Park Rapids, East on 34 to a left on County 80 to property on right.



Listed By:  
Wolff & Simon Real Estate

Affinity Real Estate Inc. participates in the Regional Multiple Listing Service of Minnesota, Inc Broker Reciprocity (sm) program, allowing us to display other broker's listings on our website. All properties are subject to prior sale, change or withdrawal.



Call Affinity Real Estate

**218-237-3333**

[info@affinityrealestate.com](mailto:info@affinityrealestate.com)



Affinity Real Estate - 600 Park Avenue South - Park Rapids MN 56470





website: [www.AffinityRealEstate.com](http://www.AffinityRealEstate.com) | email: [info@affinityrealestate.com](mailto:info@affinityrealestate.com) | office: 218-237-3333 | fax: 218-237-3377

**Affinity**  
REAL ESTATE INC

**\$329,000**  
MLS 6675288 Residential  
23179 County 80  
Nevis MN 56467





website: [www.AffinityRealEstate.com](http://www.AffinityRealEstate.com) | email: [info@affinityrealestate.com](mailto:info@affinityrealestate.com) | office: 218-237-3333 | fax: 218-237-3377

**Affinity**  
REAL ESTATE INC

**\$329,000**  
MLS 6675288 Residential  
23179 County 80  
Nevis MN 56467





website: [www.AffinityRealEstate.com](http://www.AffinityRealEstate.com) | email: [info@affinityrealestate.com](mailto:info@affinityrealestate.com) | office: 218-237-3333 | fax: 218-237-3377

**Affinity**  
REAL ESTATE INC

**\$329,000**  
MLS 6675288 Residential  
23179 County 80  
Nevis MN 56467





website: [www.AffinityRealEstate.com](http://www.AffinityRealEstate.com) | email: [info@affinityrealestate.com](mailto:info@affinityrealestate.com) | office: 218-237-3333 | fax: 218-237-3377

**Affinity**  
REAL ESTATE INC

**\$329,000**  
MLS 6675288 Residential  
23179 County 80  
Nevis MN 56467





website: [www.AffinityRealEstate.com](http://www.AffinityRealEstate.com) | email: [info@affinityrealestate.com](mailto:info@affinityrealestate.com) | office: 218-237-3333 | fax: 218-237-3377



**\$329,000**  
 MLS 6675288 Residential  
 23179 County 80  
 Nevis MN 56467



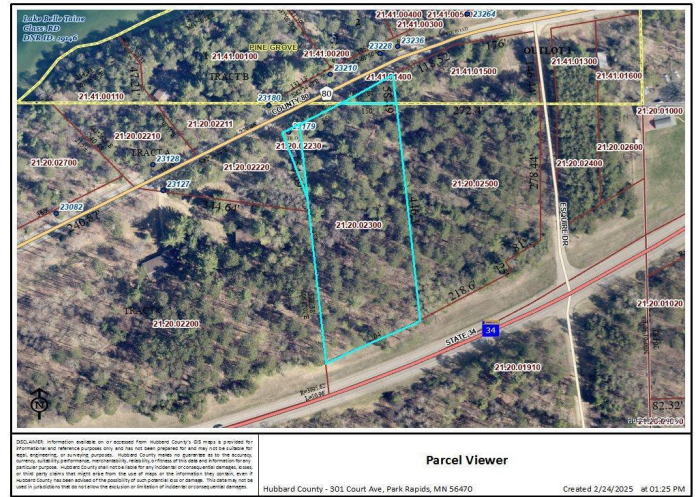


website: [www.AffinityRealEstate.com](http://www.AffinityRealEstate.com) | email: [info@affinityrealestate.com](mailto:info@affinityrealestate.com) | office: 218-237-3333 | fax: 218-237-3377

**Affinity**  
REAL ESTATE INC

**\$329,000**  
MLS 6675288 Residential  
23179 County 80  
Nevis MN 56467





website: [www.AffinityRealEstate.com](http://www.AffinityRealEstate.com) | email: [info@affinityrealestate.com](mailto:info@affinityrealestate.com) | office: 218-237-3333 | fax: 218-237-3377



**\$329,000**  
 MLS 6675288 Residential  
 23179 County 80  
 Nevis MN 56467