



MLS 6675367 Residential

\$299,900

2,160 sq ft
4 bedrooms
2 baths

11288 Leewood Lane
Brainerd MN 56401

Status: Active

Description:

Surrounded by towering pines and peaceful natural beauty, this 4-bedroom, 2-bath home offers 2.5 acres of privacy in East Gull Lake. Relax on the wraparound deck overlooking a scenic pond, vibrant gardens, and wildlife views. Inside, enjoy a newly updated kitchen, fresh paint, and new bedroom flooring. The finished lower level adds a large family room, a fourth bedroom, a second bath, and a private entrance—perfect for guests or a separate living space. Close enough to take a golf cart to Gull Lake beaches, boat access, Cragun's Legacy Courses, and the Gravel Pit Golf Course. A true hidden retreat in the heart of the Brainerd Lakes area.

Additional Details:

Year Built	1990
Lot Acres	2.5
Lot Dimensions	329x330x329x330
School District	181
Taxes	\$1,024
Taxes with Assessments	\$1,090
Tax Year	2024

Additional Features:

Basement: Block, Egress Window(s), Finished, Full, Walkout **Fuel:** Natural Gas **Heat:** Forced Air **Sewer:** Private Sewer **Water:** Private, Well **Air Conditioning:** Window Unit(s)

Driving Directions:

North on 371 for 5 miles to a left on Gull Dam Rd. Go 2 miles to left on Gull River Rd, go 1.5 miles to left on Leewood Lane. Home on the left



Listed By:
Woods to Water Real Estate

Affinity Real Estate Inc. participates in the Regional Multiple Listing Service of Minnesota, Inc Broker Reciprocity (sm) program, allowing us to display other broker's listings on our website. All properties are subject to prior sale, change or withdrawal.



Call Affinity Real Estate

218-237-3333

info@affinityrealestate.com



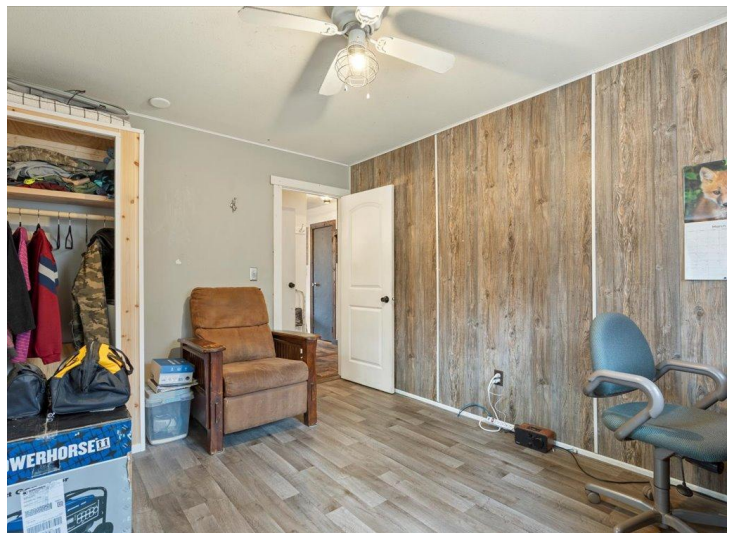
Affinity Real Estate - 600 Park Avenue South - Park Rapids MN 56470



website: www.AffinityRealEstate.com | email: info@affinityrealestate.com | office: 218-237-3333 | fax: 218-237-3377

Affinity
REAL ESTATE INC

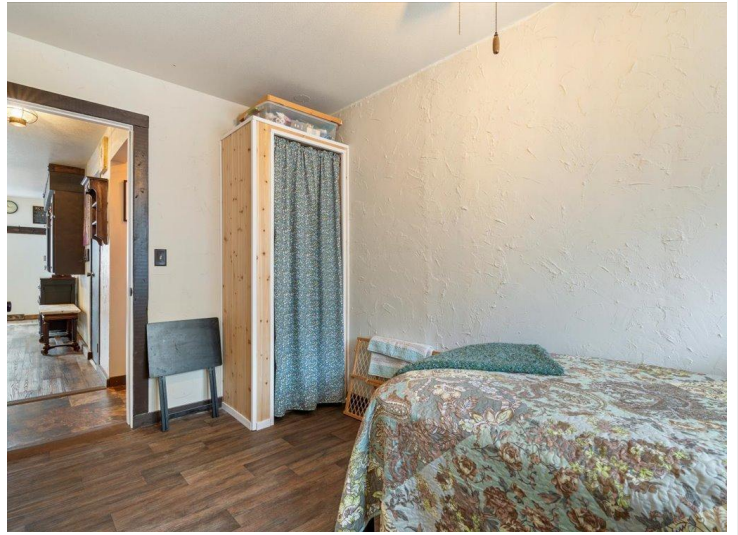
\$299,900
MLS 6675367 Residential
11288 Leewood Lane
Brainerd MN 56401



website: www.AffinityRealEstate.com | email: info@affinityrealestate.com | office: 218-237-3333 | fax: 218-237-3377

Affinity
REAL ESTATE INC

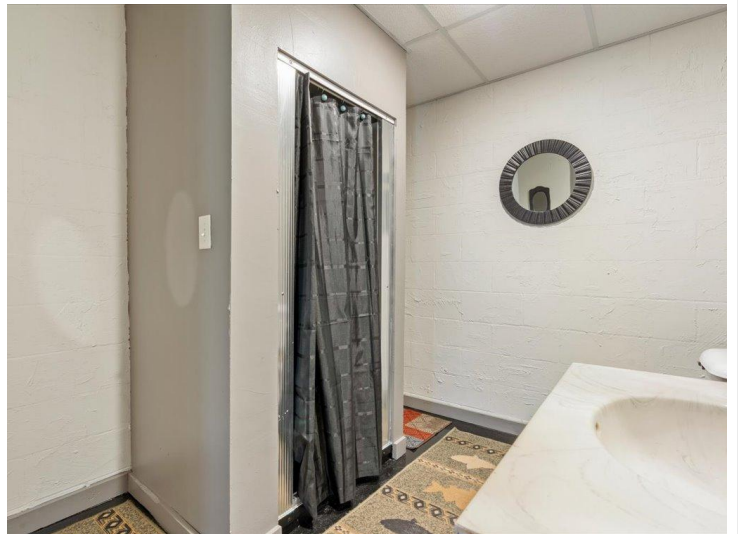
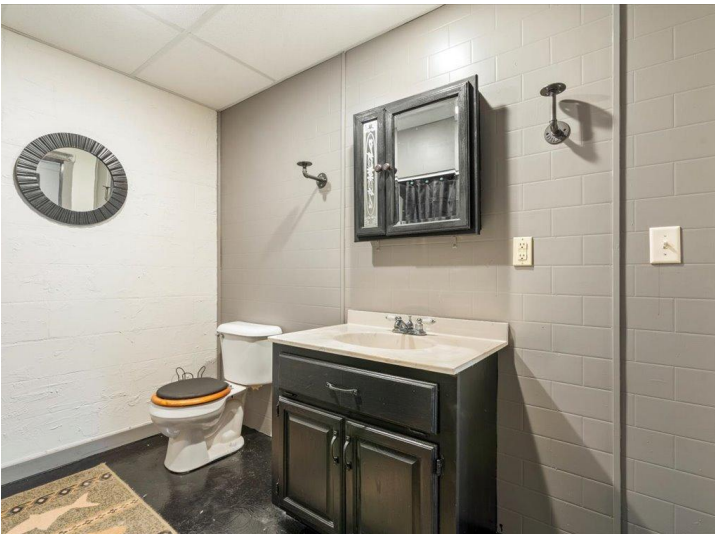
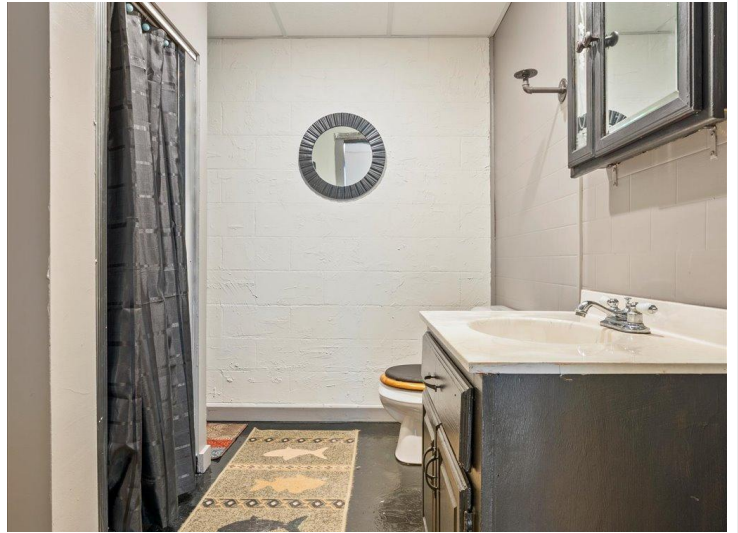
\$299,900
MLS 6675367 Residential
11288 Leewood Lane
Brainerd MN 56401



website: www.AffinityRealEstate.com | email: info@affinityrealestate.com | office: 218-237-3333 | fax: 218-237-3377

Affinity
REAL ESTATE INC

\$299,900
MLS 6675367 Residential
11288 Leewood Lane
Brainerd MN 56401



website: www.AffinityRealEstate.com | email: info@affinityrealestate.com | office: 218-237-3333 | fax: 218-237-3377

Affinity
REAL ESTATE INC

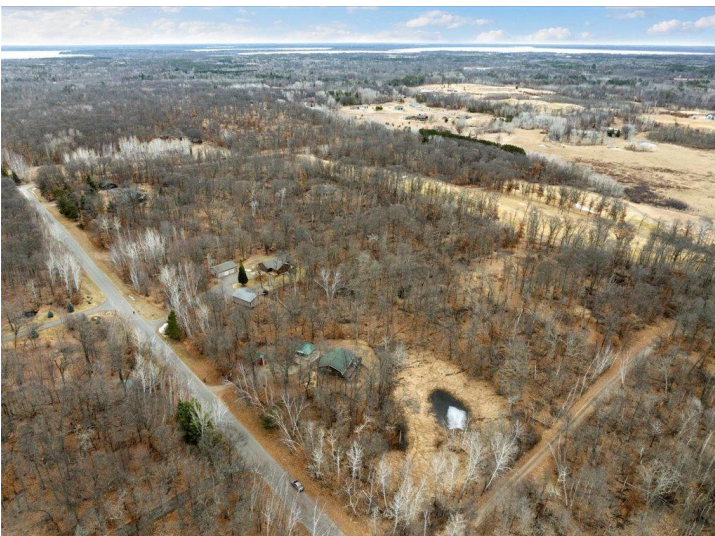
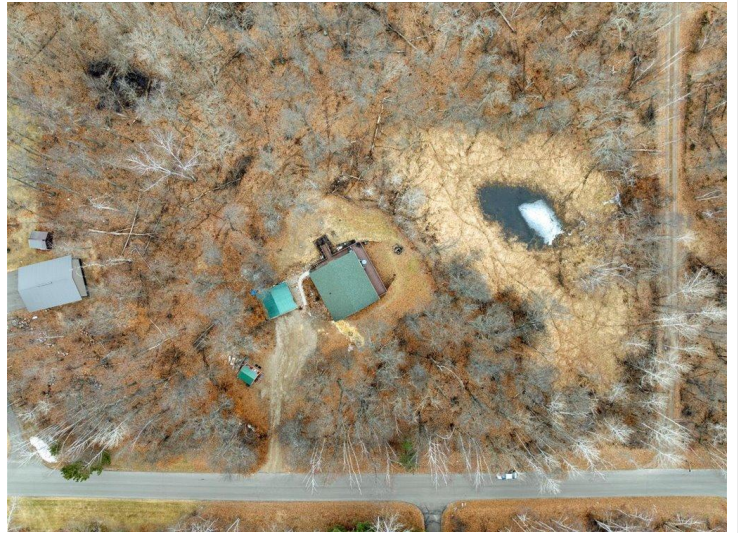
\$299,900
MLS 6675367 Residential
11288 Leewood Lane
Brainerd MN 56401



website: www.AffinityRealEstate.com | email: info@affinityrealestate.com | office: 218-237-3333 | fax: 218-237-3377



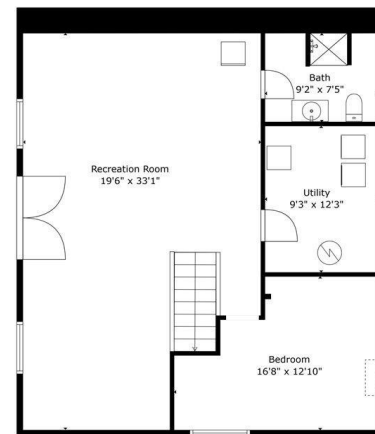
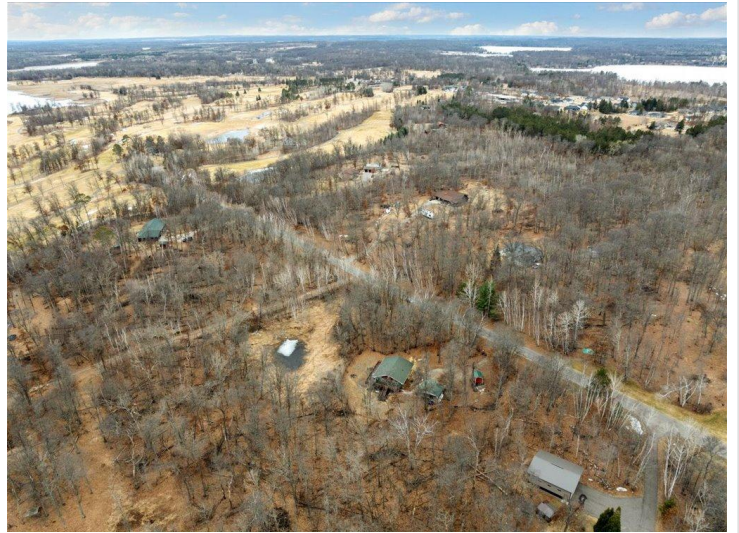
\$299,900
 MLS 6675367 Residential
 11288 Leewood Lane
 Brainerd MN 56401



website: www.AffinityRealEstate.com | email: info@affinityrealestate.com | office: 218-237-3333 | fax: 218-237-3377



\$299,900
 MLS 6675367 Residential
 11288 Leewood Lane
 Brainerd MN 56401

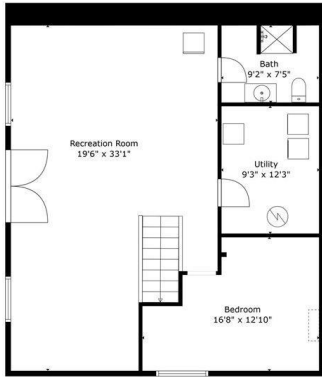


TOTAL: 1926 sq. ft.
 BELOW GROUND: 899 sq. ft. FLOOR 2: 1027 sq. ft.
 EXCLUDED AREAS: UTILITY: 113 sq. ft.
 Size And Dimensions Are Approximate. Actual Measurements May Vary.

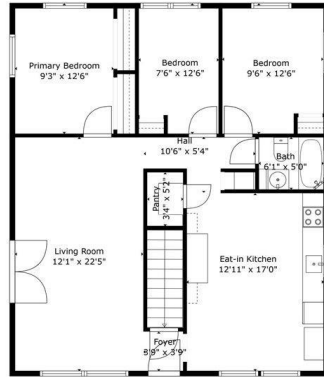
website: www.AffinityRealEstate.com | email: info@affinityrealestate.com | office: 218-237-3333 | fax: 218-237-3377



\$299,900
 MLS 6675367 Residential
 11288 Leewood Lane
 Brainerd MN 56401

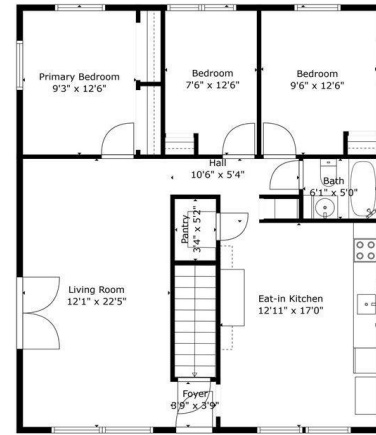


Floor 1

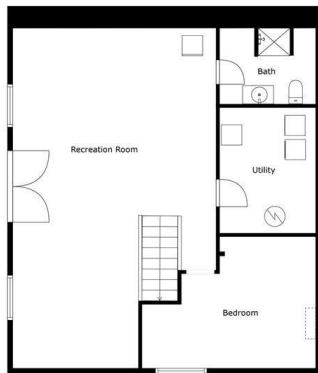


Floor 2

TOTAL: 1926 sq. ft.
BELOW GROUND: 899 sq. ft., FLOOR 2: 1027 sq. ft.
EXCLUDED AREAS: UTILITY: 113 sq. ft.
Size And Dimensions Are Approximate. Actual Measurements May Vary.



TOTAL: 1926 sq. ft.
BELOW GROUND: 899 sq. ft., FLOOR 2: 1027 sq. ft.
EXCLUDED AREAS: UTILITY: 113 sq. ft.
Size And Dimensions Are Approximate. Actual Measurements May Vary.



Floor 1



Floor 2

Size And Dimensions Are Approximate. Actual Measurements May Vary.



website: www.AffinityRealEstate.com | email: info@affinityrealestate.com | office: 218-237-3333 | fax: 218-237-3377

Affinity
REAL ESTATE INC

\$299,900
MLS 6675367 Residential
11288 Leewood Lane
Brainerd MN 56401