



MLS 6675759 Residential

\$374,900

2,040 sq ft
3 bedrooms
2 baths

24285 County Highway 21
Detroit Lakes MN 56501

Status: Active

Description:

This 2023 custom built home has so much to offer! Bright, clean, and open spaces greet you, offering 3 bedrooms and 2 full bathrooms. Take in the beauty of nature, as the property is situated on 4 wooded acres, making it serene and private. The home is equipped with stainless steel appliances, a Navian tankless water heater, and efficient in floor heat throughout. Car and toy storage? No Problem! The attached heated garage has plenty of room for all of your extra belongings. Schedule a showing today!

Additional Details:

Year Built	2023
Lot Acres	4.02
Lot Dimensions	irregular
Garage Stalls	2
School District	22
Taxes	\$318
Taxes with Assessments	\$318
Tax Year	2024

Additional Features:

Basement: None **Fuel:** Propane **Garage:** 2 **Heat:** Forced Air, Radiant Floor **Sewer:** Mound Septic, Septic System Compliant - Yes **Water:** Well
Air Conditioning: Central Air

Driving Directions:

Head north on CO 21 approx. 8 miles home is marked with a sign on the east side of the road.



Listed By:
HomeSmart Adventure Realty

Affinity Real Estate Inc. participates in the Regional Multiple Listing Service of Minnesota, Inc Broker Reciprocity (sm) program, allowing us to display other broker's listings on our website. All properties are subject to prior sale, change or withdrawal.



Call Affinity Real Estate

218-237-3333

info@affinityrealestate.com



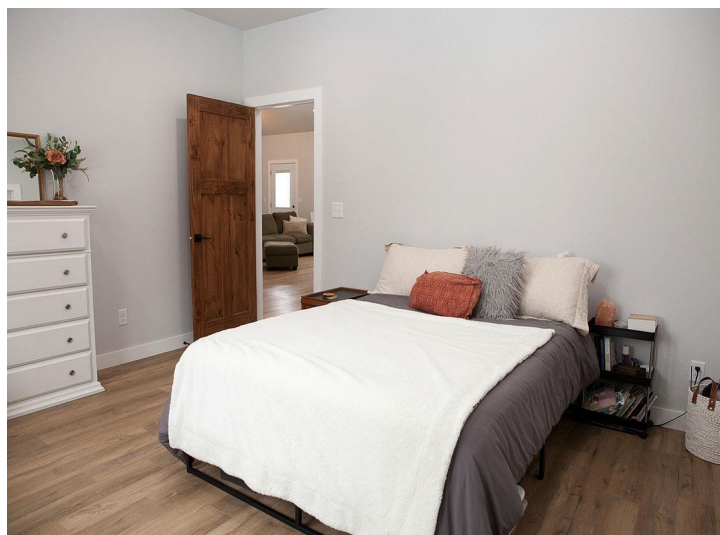
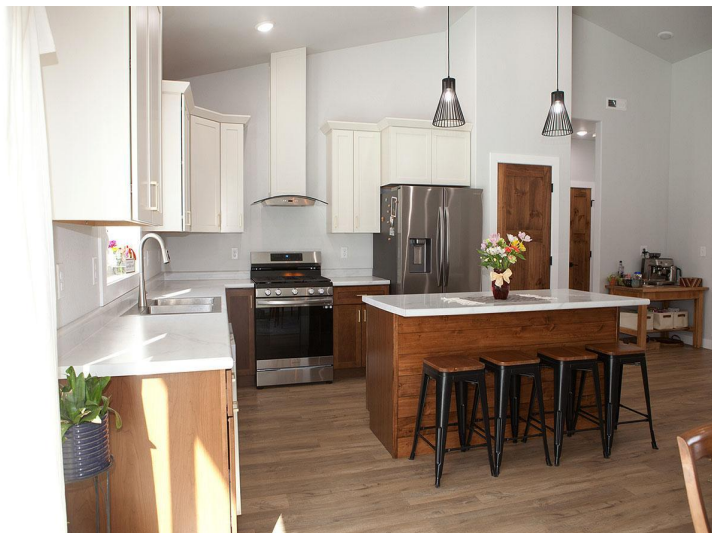
Affinity Real Estate - 600 Park Avenue South - Park Rapids MN 56470



website: www.AffinityRealEstate.com | email: info@affinityrealestate.com | office: 218-237-3333 | fax: 218-237-3377

Affinity
REAL ESTATE INC

\$374,900
MLS 6675759 Residential
24285 County Highway 21
Detroit Lakes MN 56501



website: www.AffinityRealEstate.com | email: info@affinityrealestate.com | office: 218-237-3333 | fax: 218-237-3377

Affinity
REAL ESTATE INC

\$374,900

MLS 6675759 Residential
24285 County Highway 21
Detroit Lakes MN 56501



website: www.AffinityRealEstate.com | email: info@affinityrealestate.com | office: 218-237-3333 | fax: 218-237-3377



\$374,900
MLS 6675759 Residential
24285 County Highway 21
Detroit Lakes MN 56501



website: www.AffinityRealEstate.com | email: info@affinityrealestate.com | office: 218-237-3333 | fax: 218-237-3377

Affinity
REAL ESTATE INC

\$374,900

MLS 6675759 Residential
24285 County Highway 21
Detroit Lakes MN 56501



website: www.AffinityRealEstate.com | email: info@affinityrealestate.com | office: 218-237-3333 | fax: 218-237-3377



\$374,900
MLS 6675759 Residential
24285 County Highway 21
Detroit Lakes MN 56501