



MLS 6676052 Land

**\$219,000**

0.81 Acres  
Rough Grade

11284 County Highway 17  
Detroit Lakes MN 56501

Status: Active

**Description:**

Vacant land in the Shoreham area rarely hits the open-market and land on Co Hwy 17 that is visible from US HWY 59 is a once-in-a-lifetime opportunity. This .81 acre tract of land has over 250 feet of road frontage on Co Hwy 17, and has been cleared, leveled and surveyed. This was the former site of the County 17 Bar & Restaurant. Now it could be a display lot, staging or storage area, guest cabin or the site of your next commercial endeavor.

**Additional Details:**

Lot Acres	0.81
Lot Dimensions	258x123
School District	22
Taxes	\$768
Taxes with Assessments	\$980
Tax Year	2024

**Additional Features:**

**Driving Directions:**

From Detroit Lakes take HWY 59 South to 4.8 miles to CR-22, take right and follow Co Hwy 17 1.7 miles to property on the West side of the road.



Listed By:  
Counselor Realty Detroit Lakes

Affinity Real Estate Inc. participates in the Regional Multiple Listing Service of Minnesota, Inc Broker Reciprocity (sm) program, allowing us to display other broker's listings on our website. All properties are subject to prior sale, change or withdrawal.



**Call Affinity Real Estate**

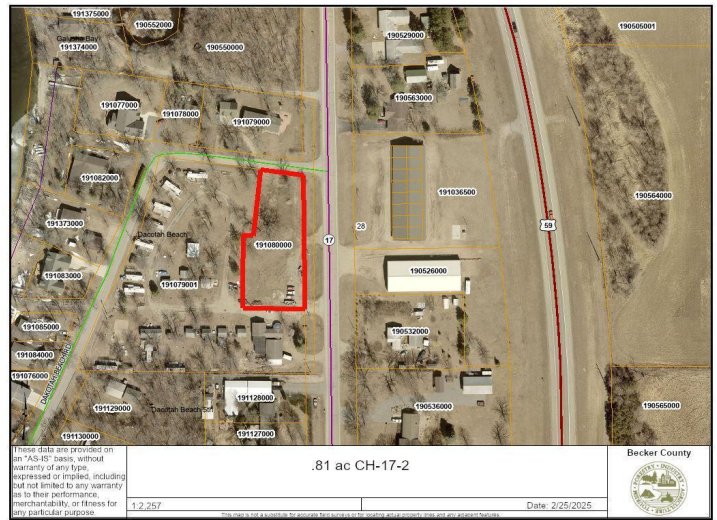
**218-237-3333**

**info@affinityrealestate.com**



**Affinity Real Estate - 600 Park Avenue South - Park Rapids MN 56470**



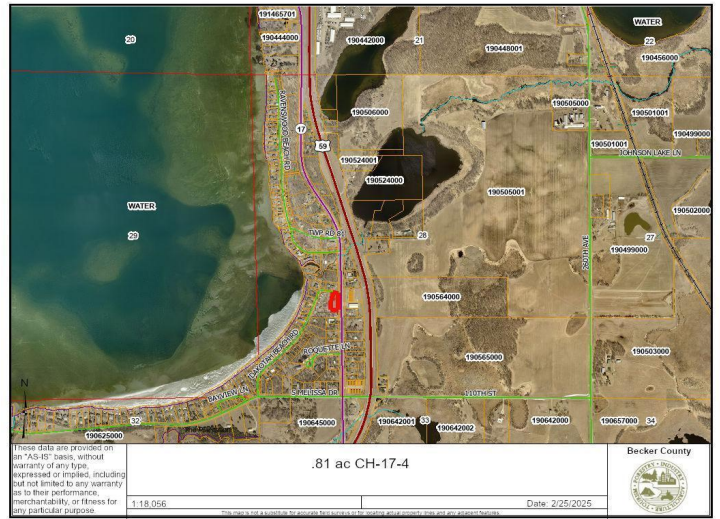


website: [www.AffinityRealEstate.com](http://www.AffinityRealEstate.com) | email: [info@affinityrealestate.com](mailto:info@affinityrealestate.com) | office: 218-237-3333 | fax: 218-237-3377



**\$219,000**  
 MLS 6676052 Land  
 11284 County Highway 17  
 Detroit Lakes MN 56501





website: [www.AffinityRealEstate.com](http://www.AffinityRealEstate.com) | email: [info@affinityrealestate.com](mailto:info@affinityrealestate.com) | office: 218-237-3333 | fax: 218-237-3377



**\$219,000**  
 MLS 6676052 Land  
 11284 County Highway 17  
 Detroit Lakes MN 56501





website: [www.AffinityRealEstate.com](http://www.AffinityRealEstate.com) | email: [info@affinityrealestate.com](mailto:info@affinityrealestate.com) | office: 218-237-3333 | fax: 218-237-3377



**\$219,000**  
MLS 6676052 Land  
11284 County Highway 17  
Detroit Lakes MN 56501



website: [www.AffinityRealEstate.com](http://www.AffinityRealEstate.com) | email: [info@affinityrealestate.com](mailto:info@affinityrealestate.com) | office: 218-237-3333 | fax:218-237-3377



**\$219,000**

MLS 6676052 Land  
11284 County Highway 17  
Detroit Lakes MN 56501