



MLS 6676700 Lake Land

**\$124,900**

**Description:**

Duck Point Woods on Leech Lake! Check out this amazing access lot located at the end of the cul de sac and directly across from the access point to Leech Lake. This very private lot offers a cleared building site, driveway, culvert and a septic system for a 2 bedroom residence. Bring your building plans and start enjoying everything the Leech Lake area has to offer!

**Additional Details:**

Lot Acres	1.5
Lot Dimensions	276x65x204x280xIrregular
School District	115
Taxes	\$312
Taxes with Assessments	\$312
Tax Year	2024

**Additional Features:**

**Driving Directions:**

From Cass Lake, Hwy 2 East to South on Sucker Bay Road to Right on Ottertail Point Drive to Right on Duck Point Road to property on Right.



Listed By:  
Cedar Point Realty -Walker

Affinity Real Estate Inc. participates in the Regional Multiple Listing Service of Minnesota, Inc Broker Reciprocity (sm) program, allowing us to display other broker's listings on our website. All properties are subject to prior sale, change or withdrawal.



**Call Affinity Real Estate**

**218-237-3333**

**info@affinityrealestate.com**



**Affinity Real Estate - 600 Park Avenue South - Park Rapids MN 56470**



website: [www.AffinityRealEstate.com](http://www.AffinityRealEstate.com) | email: [info@affinityrealestate.com](mailto:info@affinityrealestate.com) | office: 218-237-3333 | fax:218-237-3377



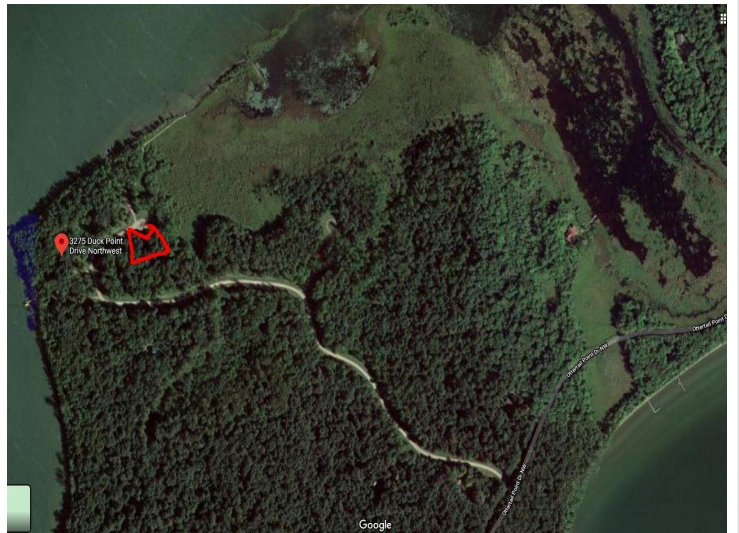
**\$124,900**  
MLS 6676700 Lake Land  
3298 Duck Point Drive  
Cass Lake MN 56633



website: [www.AffinityRealEstate.com](http://www.AffinityRealEstate.com) | email: [info@affinityrealestate.com](mailto:info@affinityrealestate.com) | office: 218-237-3333 | fax:218-237-3377



**\$124,900**  
MLS 6676700 Lake Land  
3298 Duck Point Drive  
Cass Lake MN 56633



website: [www.AffinityRealEstate.com](http://www.AffinityRealEstate.com) | email: [info@affinityrealestate.com](mailto:info@affinityrealestate.com) | office: 218-237-3333 | fax:218-237-3377



**\$124,900**  
MLS 6676700 Lake Land  
3298 Duck Point Drive  
Cass Lake MN 56633