



MLS 6676946 Land

\$23,000

1.13 Acres
Raw Land

TBD1 Central Avenue
Park Rapids MN 56470

Status: Pending

Description:

Stunning 1+ acre lot in the city limits of Park Rapids. There's ample space to build your home while maintaining privacy, all within close proximity to many of Park Rapids' conveniences, including downtown and Heartland Park.

Additional Details:

Lot Acres	1.13
Lot Dimensions	141x340x152x340
School District	309
Taxes	\$282
Taxes with Assessments	\$282
Tax Year	2024

Additional Features:

Driving Directions:

In Park Rapids 71/34 stop light. East on 34 to Central Ave. Right to property on right.



Listed By:
Wolff & Simon Real Estate

Affinity Real Estate Inc. participates in the Regional Multiple Listing Service of Minnesota, Inc Broker Reciprocity (sm) program, allowing us to display other broker's listings on our website. All properties are subject to prior sale, change or withdrawal.



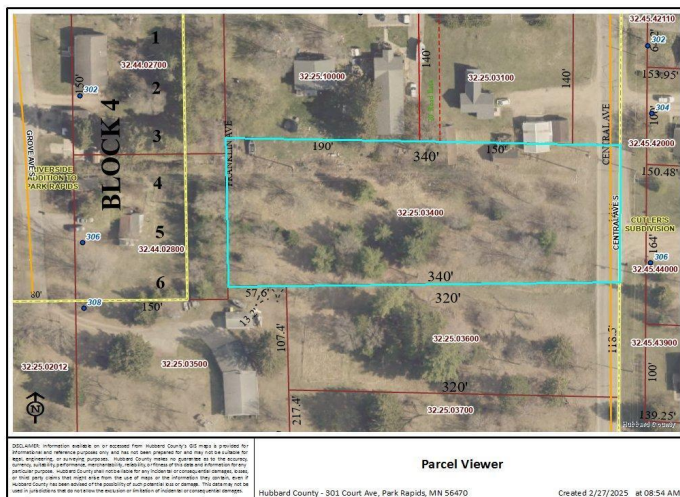
Call Affinity Real Estate

218-237-3333

info@affinityrealestate.com



Affinity Real Estate - 600 Park Avenue South - Park Rapids MN 56470



website: www.AffinityRealEstate.com | email: info@affinityrealestate.com | office: 218-237-3333 | fax: 218-237-3377



\$23,000
 MLS 6676946 Land
 TBD1 Central Avenue
 Park Rapids MN 56470