



MLS 6677124 Land

**\$23,000**

0.96 Acres  
Raw Land

TBD2 Central Avenue  
Park Rapids MN 56470

Status: Pending

**Description:**

Nicely wooded within the city limits of Park Rapids. This level lot is perfect for building your new home. It's conveniently located close to shopping and Heartland Park. An adjacent lot is also available, providing the option to buy both for extra privacy.

**Additional Details:**

Lot Acres	0.96
Lot Dimensions	119x320x107x320
School District	309
Taxes	\$278
Taxes with Assessments	\$278
Tax Year	2024

**Additional Features:**

**Driving Directions:**

From 71/34 stoplight in Park Rapids. East on 34 to Central Ave. Right at stop signs to property on right.



Listed By:  
Wolff & Simon Real Estate

Affinity Real Estate Inc. participates in the Regional Multiple Listing Service of Minnesota, Inc Broker Reciprocity (sm) program, allowing us to display other broker's listings on our website. All properties are subject to prior sale, change or withdrawal.



**Call Affinity Real Estate**

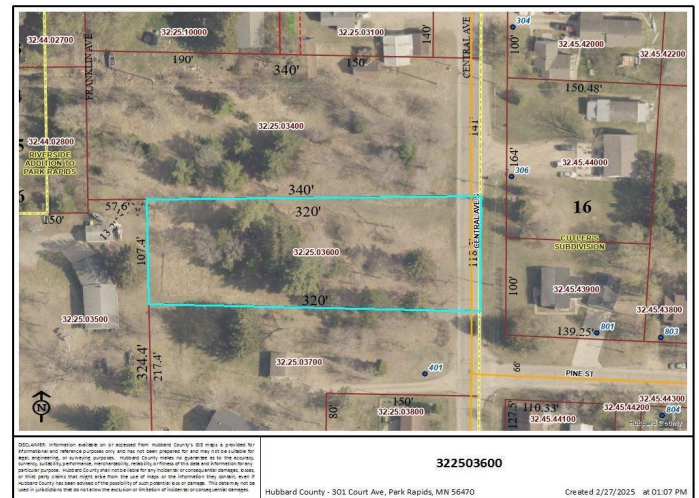
**218-237-3333**

**info@affinityrealestate.com**



**Affinity Real Estate - 600 Park Avenue South - Park Rapids MN 56470**





website: [www.AffinityRealEstate.com](http://www.AffinityRealEstate.com) | email: [info@affinityrealestate.com](mailto:info@affinityrealestate.com) | office: 218-237-3333 | fax: 218-237-3377



**\$23,000**  
 MLS 6677124 Land  
 TBD2 Central Avenue  
 Park Rapids MN 56470