



MLS 6677135 Commercial

**\$425,000**

3062 State Highway 84  
Longville MN 56655

Status: Active

#### Description:

Step into a rare opportunity to own a local icon with deep roots in the community. For 68 years, Mule Lake Store was a trusted gathering place for residents and visitors alike. Conveniently located on State Highway 84, this once-thriving business served as the go-to stop for customers from surrounding lakes. Though it has been closed for years, the potential to revive this beloved establishment remains.

The store offers a charming covered deck perfect for enjoying pizza, fresh coffee, ice cream, or a soda. Inside, the space was once stocked with sporting goods, bait and tackle, gasoline, groceries, and even an ATM, making it a one-stop shop for outdoor enthusiasts and those needing everyday essentials. Attached to the store is a cozy two-bedroom home featuring a wood-burning fireplace, providing the perfect blend of work and home life.

Surrounded by the pristine lakes of Cass County, this property is ready for someone with vision to bring it back to life. Whether you dream of reopening the store, transforming the space, or starting something entirely new, this is your chance to own not only a business but a piece of up-north history. The community awaits...

#### Additional Details:

Year Built	1963
Lot Acres	2.54
Lot Dimensions	530x528x396
Garage Stalls	2
School District	118
Taxes	\$1,732
Taxes with Assessments	\$2,032
Tax Year	2025

#### Additional Features:

**Basement:** Block, Full, Partially Finished **Fuel:** Propane **Garage:** 2 **Heat:** Forced Air, Fireplace(s) **Sewer:** Mound Septic, Private Sewer, Tank with Drainage Field **Water:** Submersible - 4 Inch, Drilled, Private, Well **Air Conditioning:** Central Air

#### Driving Directions:

From State Hwy 84 for 6.3 miles to property on left  
Heartland Real Estate



Affinity Real Estate Inc. participates in the Regional Multiple Listing Service of Minnesota, Inc Broker Reciprocity (sm) program, allowing us to display other broker's listings on our website. All properties are subject to prior sale, change or withdrawal.



**Call Affinity Real Estate**

**218-237-3333**

**info@affinityrealestate.com**



**Affinity Real Estate - 600 Park Avenue South - Park Rapids MN 56470**





website: [www.AffinityRealEstate.com](http://www.AffinityRealEstate.com) | email: [info@affinityrealestate.com](mailto:info@affinityrealestate.com) | office: 218-237-3333 | fax: 218-237-3377

**Affinity**  
REAL ESTATE INC

**\$425,000**  
MLS 6677135 Commercial  
3062 State Highway 84  
Longville MN 56655



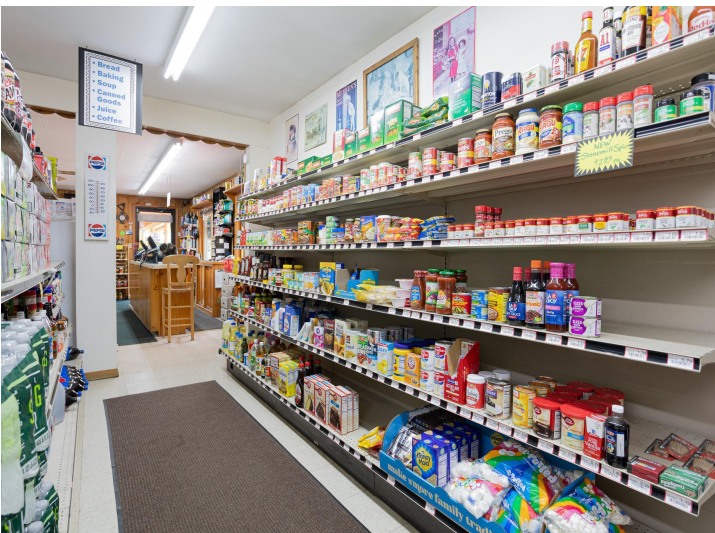


website: [www.AffinityRealEstate.com](http://www.AffinityRealEstate.com) | email: [info@affinityrealestate.com](mailto:info@affinityrealestate.com) | office: 218-237-3333 | fax: 218-237-3377

**Affinity**  
REAL ESTATE INC

**\$425,000**  
MLS 6677135 Commercial  
3062 State Highway 84  
Longville MN 56655





website: [www.AffinityRealEstate.com](http://www.AffinityRealEstate.com) | email: [info@affinityrealestate.com](mailto:info@affinityrealestate.com) | office: 218-237-3333 | fax: 218-237-3377

**Affinity**  
REAL ESTATE INC

**\$425,000**  
MLS 6677135 Commercial  
3062 State Highway 84  
Longville MN 56655





website: [www.AffinityRealEstate.com](http://www.AffinityRealEstate.com) | email: [info@affinityrealestate.com](mailto:info@affinityrealestate.com) | office: 218-237-3333 | fax: 218-237-3377



**\$425,000**  
 MLS 6677135 Commercial  
 3062 State Highway 84  
 Longville MN 56655





website: [www.AffinityRealEstate.com](http://www.AffinityRealEstate.com) | email: [info@affinityrealestate.com](mailto:info@affinityrealestate.com) | office: 218-237-3333 | fax: 218-237-3377

**Affinity**  
REAL ESTATE INC

**\$425,000**  
MLS 6677135 Commercial  
3062 State Highway 84  
Longville MN 56655





website: [www.AffinityRealEstate.com](http://www.AffinityRealEstate.com) | email: [info@affinityrealestate.com](mailto:info@affinityrealestate.com) | office: 218-237-3333 | fax: 218-237-3377

**Affinity**  
REAL ESTATE INC

**\$425,000**  
MLS 6677135 Commercial  
3062 State Highway 84  
Longville MN 56655





website: [www.AffinityRealEstate.com](http://www.AffinityRealEstate.com) | email: [info@affinityrealestate.com](mailto:info@affinityrealestate.com) | office: 218-237-3333 | fax: 218-237-3377

**Affinity**  
REAL ESTATE INC

**\$425,000**  
MLS 6677135 Commercial  
3062 State Highway 84  
Longville MN 56655





website: [www.AffinityRealEstate.com](http://www.AffinityRealEstate.com) | email: [info@affinityrealestate.com](mailto:info@affinityrealestate.com) | office: 218-237-3333 | fax: 218-237-3377



**\$425,000**  
MLS 6677135 Commercial  
3062 State Highway 84  
Longville MN 56655