



MLS 6677622 Land

**\$55,000**

2.31 Acres  
Raw Land

TBD 302 Avenue  
Detroit Lakes MN 56501

Status: Active

**Description:**

This 2.31-acre corner lot in the desirable Rolling Hills development is the perfect canvas for your dream home. Conveniently situated at the intersection of 302nd Ave and Oak Drive, it offers both space and tranquility while being just minutes away from the amenities of Detroit Lakes. Additional acreage available. Don't miss the opportunity to build your ideal retreat in this beautiful setting!

**Additional Details:**

Lot Acres	2.31
Lot Dimensions	irr
School District	22
Taxes	\$202
Taxes with Assessments	\$202
Tax Year	2024

**Additional Features:**

**Driving Directions:**

Hwy 34, just past Schultz lake to 302nd Ave. Property at the north end corner of 302nd Ave and Oak Drive. Just past 18310 302nd Ave on the right hand side.



Listed By:  
Re/Max Lakes Region

Affinity Real Estate Inc. participates in the Regional Multiple Listing Service of Minnesota, Inc Broker Reciprocity (sm) program, allowing us to display other broker's listings on our website. All properties are subject to prior sale, change or withdrawal.



**Call Affinity Real Estate**

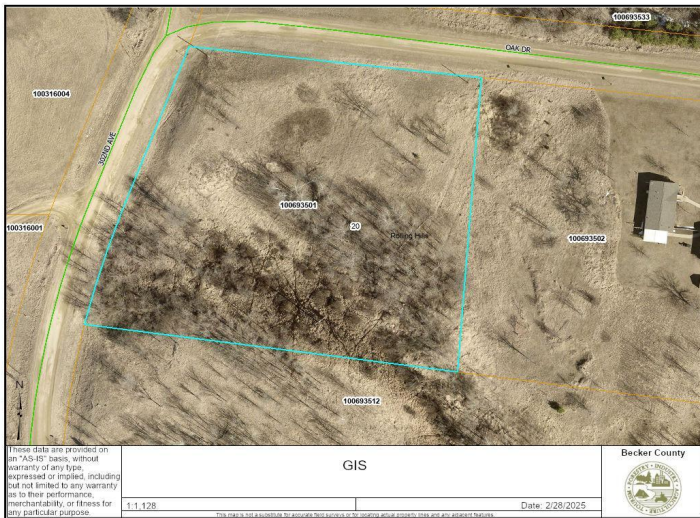
**218-237-3333**

**info@affinityrealestate.com**



**Affinity Real Estate - 600 Park Avenue South - Park Rapids MN 56470**





website: [www.AffinityRealEstate.com](http://www.AffinityRealEstate.com) | email: [info@affinityrealestate.com](mailto:info@affinityrealestate.com) | office: 218-237-3333 | fax: 218-237-3377



**\$55,000**  
 MLS 6677622 Land  
 TBD 302 Avenue  
 Detroit Lakes MN 56501

website: [www.AffinityRealEstate.com](http://www.AffinityRealEstate.com) | email: [info@affinityrealestate.com](mailto:info@affinityrealestate.com) | office: 218-237-3333 | fax:218-237-3377



**\$55,000**

MLS 6677622 Land  
TBD 302 Avenue  
Detroit Lakes MN 56501