



MLS 6677731 Lake Home

\$692,900

4,230 sq ft
5 bedrooms
4 baths

23263 County 18
Nevis MN 56467

Waterfront: Shallow

Status: Pending

Description:

A Rare Find – Shallow Lake home with over 14 acres and 1200 feet of lakeshore with easy access to the Heartland trail. The home has many exceptional features with gorgeous hardwood floors, a gourmet kitchen, and custom woodwork. The Primary Suite has an extra large walk-in closet and a private bath with a steam shower, a jetted tub, a propane freestanding fireplace, huge windows and a private balcony which faces the lake. There are large windows throughout. Enjoy the ample room for a large family or entertaining. The huge yard features beautiful trees and a fire pit to relax. There is a groomed path that leads to a dock and a swimming beach. Right off the dock is access to Lake Belle Taine just under the bridge, so you get to enjoy both lakes.

Additional Details:

Year Built	2001
Lot Acres	14.38
Lot Dimensions	1400x500
Garage Stalls	2
School District	308
Taxes	\$4,234
Taxes with Assessments	\$4,444
Tax Year	2024

Additional Features:

Basement: Daylight/Lookout Windows, Egress Window(s), Finished, Walkout **Fuel:** Electric, Propane **Garage:** 2 **Heat:** Baseboard, Boiler, Forced Air, Fireplace(s), Hot Water, Radiant Floor **Sewer:** Tank with Drainage Field **Water:** Drilled, Private, Well **Air Conditioning:** Central Air

Driving Directions:

East on 34, turn left on 225 to Co Rd 18, to 23263 on your left



Listed By:
Coldwell Banker Crown Realtors

Affinity Real Estate Inc. participates in the Regional Multiple Listing Service of Minnesota, Inc Broker Reciprocity (sm) program, allowing us to display other broker's listings on our website. All properties are subject to prior sale, change or withdrawal.



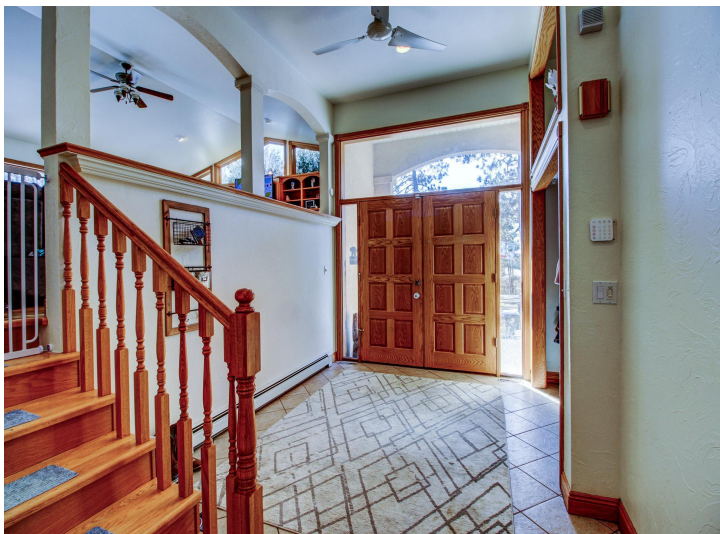
Call Affinity Real Estate

218-237-3333

info@affinityrealestate.com



Affinity Real Estate - 600 Park Avenue South - Park Rapids MN 56470



website: www.AffinityRealEstate.com | email: info@affinityrealestate.com | office: 218-237-3333 | fax: 218-237-3377

Affinity
REAL ESTATE INC

\$692,900

MLS 6677731 Lake Home
23263 County 18
Nevis MN 56467



website: www.AffinityRealEstate.com | email: info@affinityrealestate.com | office: 218-237-3333 | fax: 218-237-3377

Affinity
REAL ESTATE INC

\$692,900
MLS 6677731 Lake Home
23263 County 18
Nevis MN 56467



website: www.AffinityRealEstate.com | email: info@affinityrealestate.com | office: 218-237-3333 | fax: 218-237-3377

Affinity
REAL ESTATE INC

\$692,900
MLS 6677731 Lake Home
23263 County 18
Nevis MN 56467



website: www.AffinityRealEstate.com | email: info@affinityrealestate.com | office: 218-237-3333 | fax: 218-237-3377

Affinity
REAL ESTATE INC

\$692,900
MLS 6677731 Lake Home
23263 County 18
Nevis MN 56467



website: www.AffinityRealEstate.com | email: info@affinityrealestate.com | office: 218-237-3333 | fax: 218-237-3377

Affinity
REAL ESTATE INC

\$692,900
MLS 6677731 Lake Home
23263 County 18
Nevis MN 56467



website: www.AffinityRealEstate.com | email: info@affinityrealestate.com | office: 218-237-3333 | fax: 218-237-3377



\$692,900
 MLS 6677731 Lake Home
 23263 County 18
 Nevis MN 56467



website: www.AffinityRealEstate.com | email: info@affinityrealestate.com | office: 218-237-3333 | fax: 218-237-3377



\$692,900
MLS 6677731 Lake Home
23263 County 18
Nevis MN 56467



website: www.AffinityRealEstate.com | email: info@affinityrealestate.com | office: 218-237-3333 | fax: 218-237-3377

Affinity
REAL ESTATE INC

\$692,900
MLS 6677731 Lake Home
23263 County 18
Nevis MN 56467

