



MLS 6677933 Lake Home

\$399,000

1,540 sq ft
3 bedrooms
1 baths

20133 Roundview Road
Pierz MN 56364

Waterfront: Round Lake (Platte
Lake Twp.)

Status: Active

Description:

Welcome to this private and charming lake home, offering a cozy getaway with real opportunity and possibilities for a buyer with the right vision. This unique property features a spacious lakeside porch, a large pole barn, and a guest house right on the water. Set on a secluded lake with a scenic river flowing through, it's a dream location for nature lovers. The rustic home is full of character and presents a great opportunity for the right buyer to add their personal touch. The right buyer will not be afraid of some clean up, updates and cosmetic work that is needed. This property has the potential to become a true slice of paradise. The guest house may require significant repairs or even a rebuild, depending on the buyer's vision. With its private yard, serene lake setting, and classic up-north charm, this home could be the perfect cabin or year-round residence for someone ready to make it their own.

Additional Details:

Year Built	1979
Lot Acres	2.71
Lot Dimensions	650x175x650x175
Garage Stalls	2
School District	181
Taxes	\$1,762
Taxes with Assessments	\$1,762
Tax Year	2024

Additional Features:

Basement: None **Fuel:** Propane **Garage:** 2 **Heat:** Forced Air, Fireplace(s) **Sewer:** Tank with Drainage Field **Water:** Well **Air Conditioning:** None

Driving Directions:

From 139 turn south on 149 then east on Roundview Rd. The home is on the right.



Listed By:
MN Real Estate and Management LLC

Affinity Real Estate Inc. participates in the Regional Multiple Listing Service of Minnesota, Inc Broker Reciprocity (sm) program, allowing us to display other broker's listings on our website. All properties are subject to prior sale, change or withdrawal.



Call Affinity Real Estate

218-237-3333

info@affinityrealestate.com



Affinity Real Estate - 600 Park Avenue South - Park Rapids MN 56470



website: www.AffinityRealEstate.com | email: info@affinityrealestate.com | office: 218-237-3333 | fax: 218-237-3377

Affinity
REAL ESTATE INC

\$399,000
MLS 6677933 Lake Home
20133 Roundview Road
Pierz MN 56364



website: www.AffinityRealEstate.com | email: info@affinityrealestate.com | office: 218-237-3333 | fax: 218-237-3377

Affinity
REAL ESTATE INC

\$399,000
MLS 6677933 Lake Home
20133 Roundview Road
Pierz MN 56364



website: www.AffinityRealEstate.com | email: info@affinityrealestate.com | office: 218-237-3333 | fax: 218-237-3377

Affinity
REAL ESTATE INC

\$399,000
MLS 6677933 Lake Home
20133 Roundview Road
Pierz MN 56364



website: www.AffinityRealEstate.com | email: info@affinityrealestate.com | office: 218-237-3333 | fax: 218-237-3377



\$399,000
MLS 6677933 Lake Home
20133 Roundview Road
Pierz MN 56364



website: www.AffinityRealEstate.com | email: info@affinityrealestate.com | office: 218-237-3333 | fax: 218-237-3377

Affinity
REAL ESTATE INC

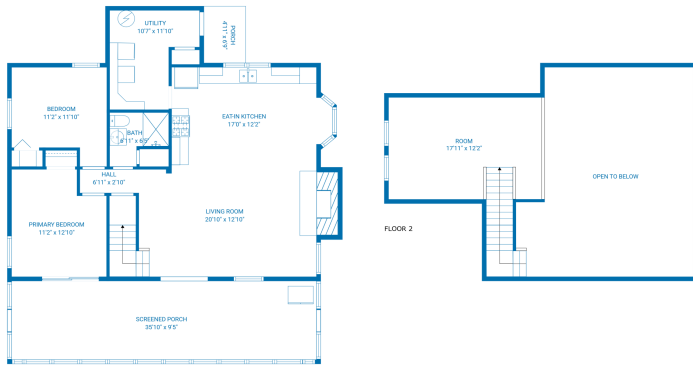
\$399,000
MLS 6677933 Lake Home
20133 Roundview Road
Pierz MN 56364



website: www.AffinityRealEstate.com | email: info@affinityrealestate.com | office: 218-237-3333 | fax: 218-237-3377



\$399,000
 MLS 6677933 Lake Home
 20133 Roundview Road
 Pierz MN 56364

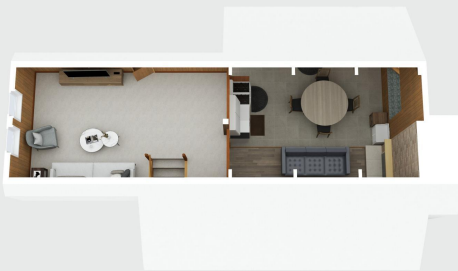


FLOOR 1

TOTAL: 1193 sq. ft.
 BELOW GROUND: 972 sq. ft. FLOOR 2: 221 sq. ft.
 EXCLUDED AREAS: SCREENED PORCH: 337 sq. ft. PORCH: 33 sq. ft. BAY WINDOW: 10 sq. ft.
 FIREPLACE: 22 sq. ft. OPEN TO BELOW: 463 sq. ft. LOW CEILING: 39 sq. ft.
 FLOOR PLAN CREATED BY CIRCULAR ANY MEASUREMENTS OBTAINED HIGHLY RELIABLE BUT NOT GUARANTEED.



FLOOR 1



FLOOR 2

website: www.AffinityRealEstate.com | email: info@affinityrealestate.com | office: 218-237-3333 | fax: 218-237-3377



\$399,000
 MLS 6677933 Lake Home
 20133 Roundview Road
 Pierz MN 56364