



MLS 6677954 Residential

**\$130,000**

973 sq ft  
2 bedrooms  
1 baths

231 Delcasse Street  
Shevlin MN 56676

Status: Active

**Description:**

Charming country home situated on 5.8 picturesque acres in Shevlin! This inviting residence boasts stunning curb appeal with its wood siding and mature trees. Inside, you'll find a spacious kitchen, two generously sized bedrooms, and a versatile bonus room perfect for hobbies, an office, or even as a spacious walk-in closet. Discover the perfect blend of comfort and rural beauty in this delightful home!

**Additional Details:**

Year Built	1930
Lot Acres	5.83
Lot Dimensions	610x460
Garage Stalls	1
School District	2311
Taxes	\$1,134
Taxes with Assessments	\$1,224
Tax Year	2024

**Additional Features:**

**Basement:** Block, Partial, Sump Pump, Unfinished **Fuel:** Electric, Propane **Garage:** 1 **Heat:** Baseboard, Forced Air **Sewer:** Private Sewer  
**Water:** Submersible - 4 Inch **Air Conditioning:** None

**Driving Directions:**

Hwy 2 to Shevlin, North on Main Street to Delcasse. House is on corner.



Listed By:  
Lake-N-Woods Realty

Affinity Real Estate Inc. participates in the Regional Multiple Listing Service of Minnesota, Inc Broker Reciprocity (sm) program, allowing us to display other broker's listings on our website. All properties are subject to prior sale, change or withdrawal.



Call Affinity Real Estate

**218-237-3333**

[info@affinityrealestate.com](mailto:info@affinityrealestate.com)



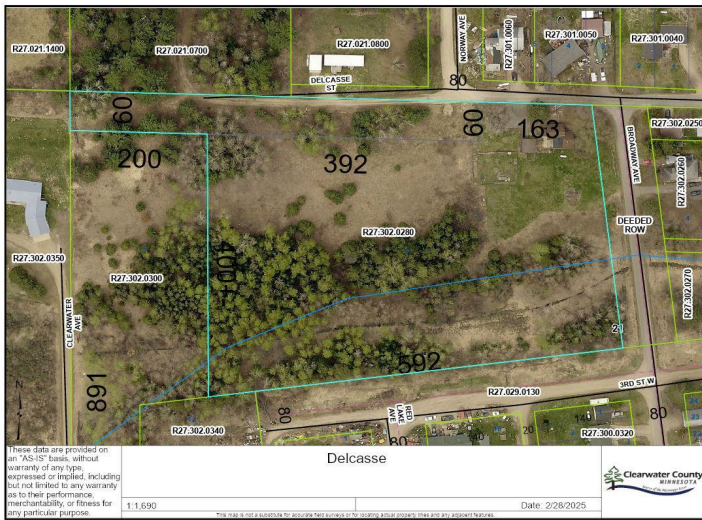
Affinity Real Estate - 600 Park Avenue South - Park Rapids MN 56470



website: [www.AffinityRealEstate.com](http://www.AffinityRealEstate.com) | email: [info@affinityrealestate.com](mailto:info@affinityrealestate.com) | office: 218-237-3333 | fax:218-237-3377



**\$130,000**  
MLS 6677954 Residential  
231 Delcasse Street  
Shevlin MN 56676



website: [www.AffinityRealEstate.com](http://www.AffinityRealEstate.com) | email: [info@affinityrealestate.com](mailto:info@affinityrealestate.com) | office: 218-237-3333 | fax:218-237-3377



**\$130,000**  
 MLS 6677954 Residential  
 231 Delcasse Street  
 Shevlin MN 56676



website: [www.AffinityRealEstate.com](http://www.AffinityRealEstate.com) | email: [info@affinityrealestate.com](mailto:info@affinityrealestate.com) | office: 218-237-3333 | fax:218-237-3377

**Affinity**  
REAL ESTATE INC

**\$130,000**  
MLS 6677954 Residential  
231 Delcasse Street  
Shevlin MN 56676



website: [www.AffinityRealEstate.com](http://www.AffinityRealEstate.com) | email: [info@affinityrealestate.com](mailto:info@affinityrealestate.com) | office: 218-237-3333 | fax:218-237-3377

**Affinity**  
REAL ESTATE INC

**\$130,000**  
MLS 6677954 Residential  
231 Delcasse Street  
Shevlin MN 56676



website: [www.AffinityRealEstate.com](http://www.AffinityRealEstate.com) | email: [info@affinityrealestate.com](mailto:info@affinityrealestate.com) | office: 218-237-3333 | fax:218-237-3377



**\$130,000**  
MLS 6677954 Residential  
231 Delcasse Street  
Shevlin MN 56676