



MLS 6678857 Lake Land

\$199,900

Description:

Welcome to Kid Lake! This lot is ready for you to build your home or cabin and enjoy beautiful eastern views over the lake. Kid Lake is about 170 acres and features great fishing of all species. You will love the privacy and up north feel while still being just minutes from Hackensack and highway 371.

Additional Details:

Lot Acres	4.9
Lot Dimensions	210x864irr
School District	113
Taxes	(unreported)
Taxes with Assessments	(unreported)
Tax Year	2025

Additional Features:

Driving Directions:

From Hackensack: Head North on MN-371 N. Right onto County Rd 5 NW/Woman Lake Rd. Left onto 23rd Ave NW. Lot half a mile down, on the right.



Listed By:
eXp Realty

Affinity Real Estate Inc. participates in the Regional Multiple Listing Service of Minnesota, Inc Broker Reciprocity (sm) program, allowing us to display other broker's listings on our website. All properties are subject to prior sale, change or withdrawal.



Call Affinity Real Estate

218-237-3333

info@affinityrealestate.com



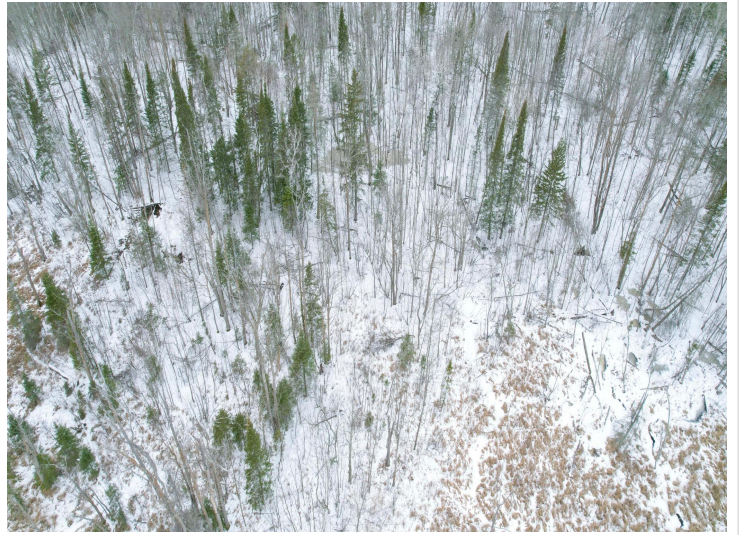
Affinity Real Estate - 600 Park Avenue South - Park Rapids MN 56470



website: www.AffinityRealEstate.com | email: info@affinityrealestate.com | office: 218-237-3333 | fax:218-237-3377



\$199,900
MLS 6678857 Lake Land
Tract 3 Ticonderoga Trail
Hackensack MN 56452



website: www.AffinityRealEstate.com | email: info@affinityrealestate.com | office: 218-237-3333 | fax:218-237-3377



\$199,900
MLS 6678857 Lake Land
Tract 3 Ticonderoga Trail
Hackensack MN 56452



website: www.AffinityRealEstate.com | email: info@affinityrealestate.com | office: 218-237-3333 | fax:218-237-3377



\$199,900
MLS 6678857 Lake Land
Tract 3 Ticonderoga Trail
Hackensack MN 56452