



MLS 6679142 Lake Home

**\$1,399,000**

828 sq ft  
1 bedrooms  
1 baths

6006 Ojibwa Road  
Brainerd MN 56401

Waterfront: Round Lake  
(18037300)

Status: Active



#### Description:

Gorgeous cottage on beautiful Round Lake, part of the sought after Gull Lake Chain!! The lot has a great spot set up for a future build with an oversized septic, well, and electric all in place. Enjoy many sunsets from your gorgeous professionally landscaped backyard! This amazing custom kitchen is complete with quartz countertops, a large barn wood island, and a farmhouse sink! Beautiful hardwood floors throughout the kitchen and living room, as well as the main bedroom that also has two bonus bunks. In the heated garage you'll find epoxy floors, floor drains, a utility sink, and a garage door screen - this finished garage can double as extra living space! An RV electrical connection is in for extra guests! Start enjoying the Gull Lake life today!

#### Additional Details:

Year Built	2021
Lot Acres	0.71
Lot Dimensions	99x298x100x310
Garage Stalls	3
School District	181
Taxes	\$3,378
Taxes with Assessments	\$3,378
Tax Year	2024

#### Additional Features:

**Basement:** Slab **Fuel:** Natural Gas **Garage:** 3 **Heat:** Forced Air **Sewer:** Private Sewer **Water:** Submersible - 4 Inch, Drilled, Private, Well **Air Conditioning:** Central Air

#### Driving Directions:

From Baxter, take Hwy 371 North to Ojibwa Road, turn right. The property is about a mile down on the left.



Listed By:  
Counselor Realty Brainerd Lakes

Affinity Real Estate Inc. participates in the Regional Multiple Listing Service of Minnesota, Inc Broker Reciprocity (sm) program, allowing us to display other broker's listings on our website. All properties are subject to prior sale, change or withdrawal.



Call Affinity Real Estate

**218-237-3333**

[info@affinityrealestate.com](mailto:info@affinityrealestate.com)



Affinity Real Estate - 600 Park Avenue South - Park Rapids MN 56470





website: [www.AffinityRealEstate.com](http://www.AffinityRealEstate.com) | email: [info@affinityrealestate.com](mailto:info@affinityrealestate.com) | office: 218-237-3333 | fax: 218-237-3377



**\$1,399,000**

MLS 6679142 Lake Home  
6006 Ojibwa Road  
Brainerd MN 56401





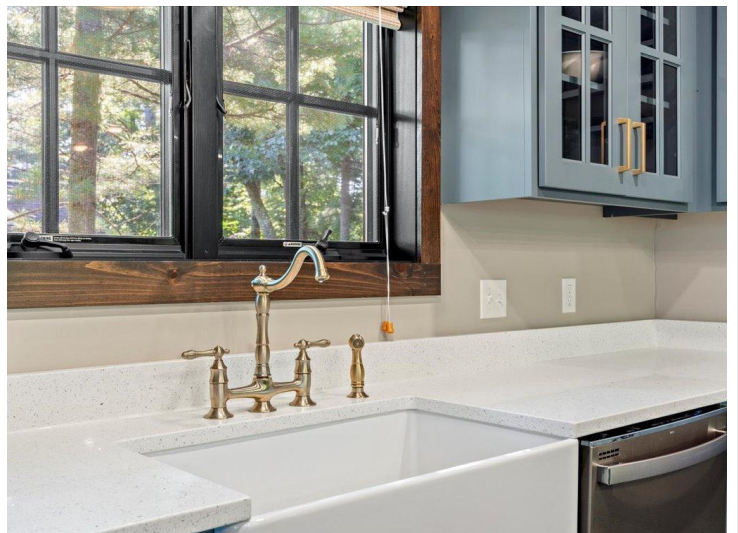
website: [www.AffinityRealEstate.com](http://www.AffinityRealEstate.com) | email: [info@affinityrealestate.com](mailto:info@affinityrealestate.com) | office: 218-237-3333 | fax: 218-237-3377



**\$1,399,000**

MLS 6679142 Lake Home  
6006 Ojibwa Road  
Brainerd MN 56401



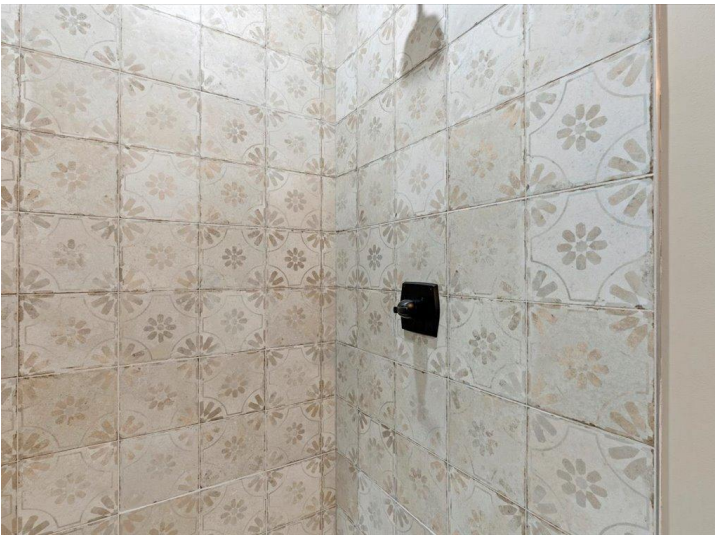


website: [www.AffinityRealEstate.com](http://www.AffinityRealEstate.com) | email: [info@affinityrealestate.com](mailto:info@affinityrealestate.com) | office: 218-237-3333 | fax: 218-237-3377

**Affinity**  
REAL ESTATE INC

**\$1,399,000**  
MLS 6679142 Lake Home  
6006 Ojibwa Road  
Brainerd MN 56401





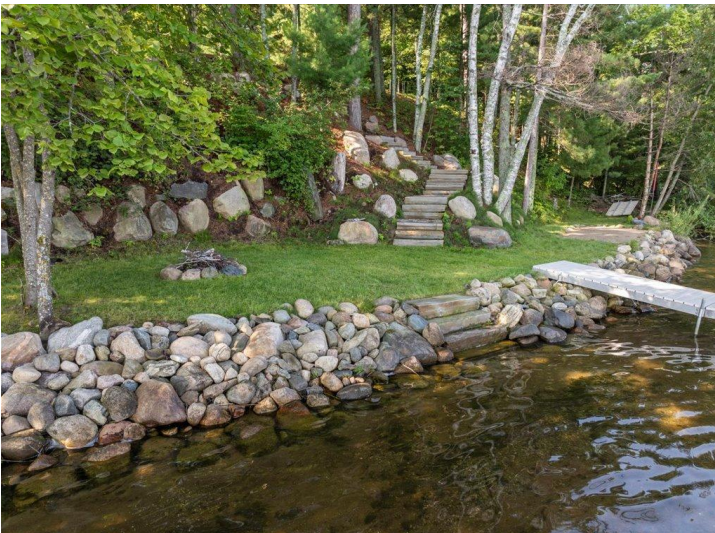
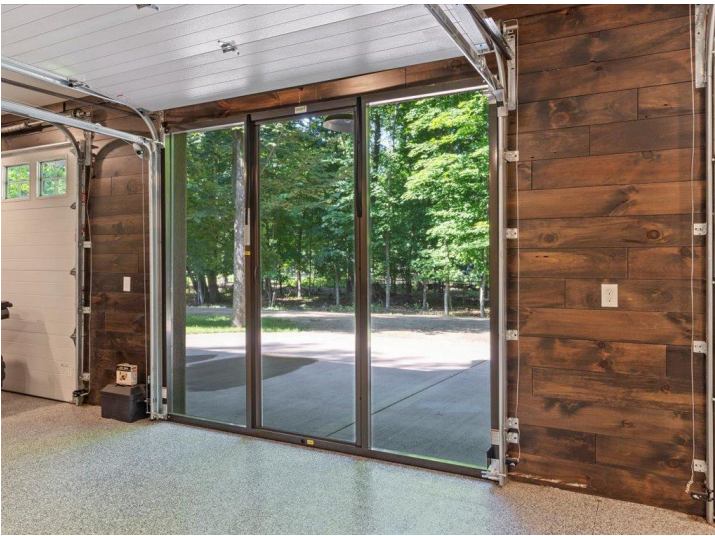
website: [www.AffinityRealEstate.com](http://www.AffinityRealEstate.com) | email: [info@affinityrealestate.com](mailto:info@affinityrealestate.com) | office: 218-237-3333 | fax: 218-237-3377

**Affinity**  
REAL ESTATE INC

**\$1,399,000**

MLS 6679142 Lake Home  
6006 Ojibwa Road  
Brainerd MN 56401





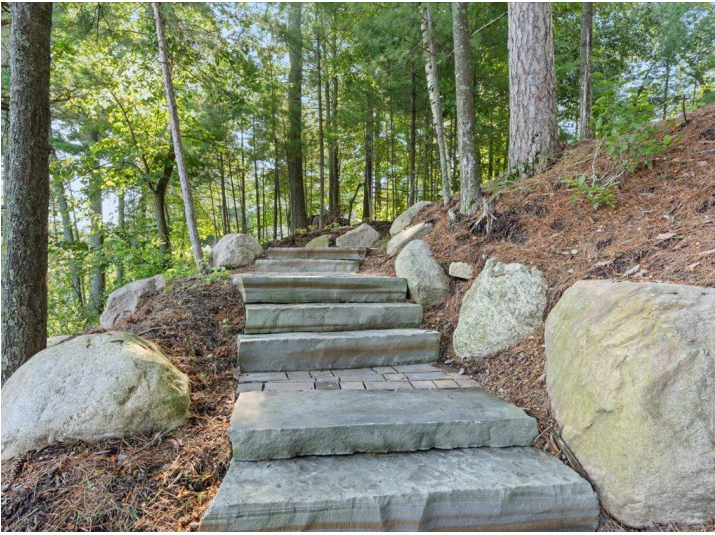
website: [www.AffinityRealEstate.com](http://www.AffinityRealEstate.com) | email: [info@affinityrealestate.com](mailto:info@affinityrealestate.com) | office: 218-237-3333 | fax: 218-237-3377



**\$1,399,000**

MLS 6679142 Lake Home  
6006 Ojibwa Road  
Brainerd MN 56401





website: [www.AffinityRealEstate.com](http://www.AffinityRealEstate.com) | email: [info@affinityrealestate.com](mailto:info@affinityrealestate.com) | office: 218-237-3333 | fax: 218-237-3377

**Affinity**  
REAL ESTATE INC

**\$1,399,000**

MLS 6679142 Lake Home  
6006 Ojibwa Road  
Brainerd MN 56401



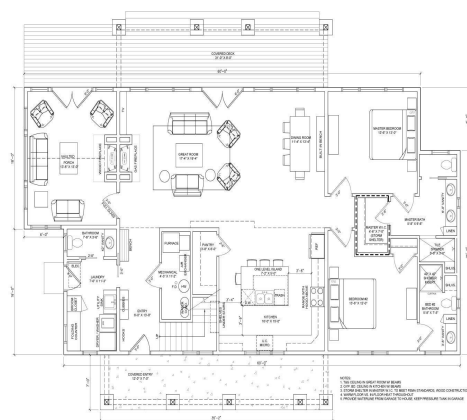
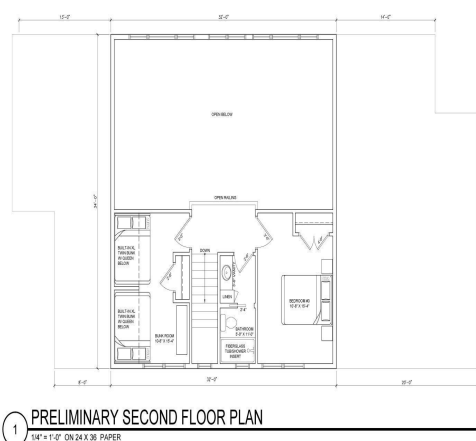
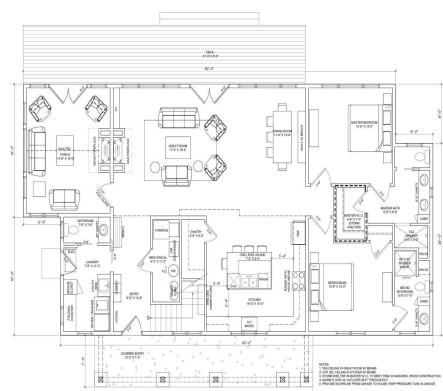
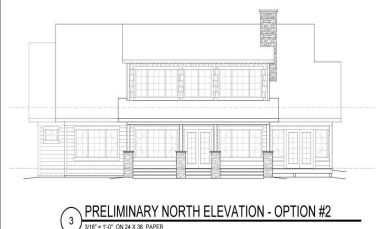
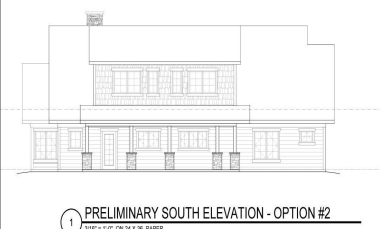
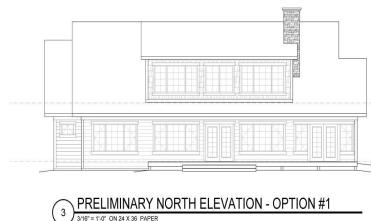
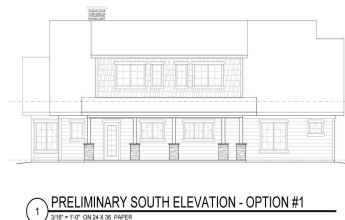
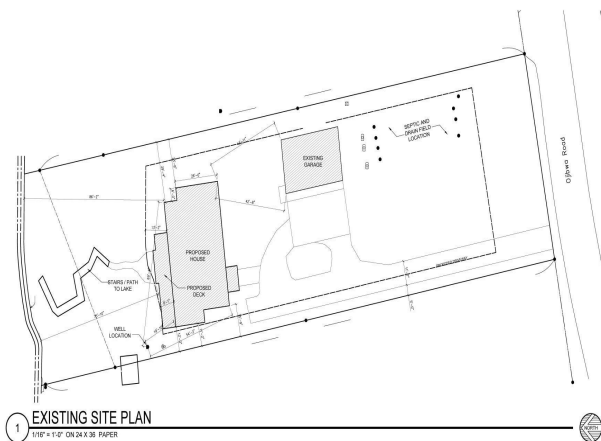


website: [www.AffinityRealEstate.com](http://www.AffinityRealEstate.com) | email: [info@affinityrealestate.com](mailto:info@affinityrealestate.com) | office: 218-237-3333 | fax: 218-237-3377



**\$1,399,000**  
 MLS 6679142 Lake Home  
 6006 Ojibwa Road  
 Brainerd MN 56401





website: [www.AffinityRealEstate.com](http://www.AffinityRealEstate.com) | email: [info@affinityrealestate.com](mailto:info@affinityrealestate.com) | office: 218-237-3333 | fax: 218-237-3377



**\$1,399,000**  
MLS 6679142 Lake Home  
6006 Ojibwa Road  
Brainerd MN 56401





website: [www.AffinityRealEstate.com](http://www.AffinityRealEstate.com) | email: [info@affinityrealestate.com](mailto:info@affinityrealestate.com) | office: 218-237-3333 | fax: 218-237-3377



**\$1,399,000**

MLS 6679142 Lake Home  
6006 Ojibwa Road  
Brainerd MN 56401