



MLS 6679312 Residential

**\$168,500**

762 sq ft  
2 bedrooms  
1 baths

601 King Street  
Park Rapids MN 56470

Status: Pending

**Description:**

Welcome to 601 King Street in Park Rapids, MN. This 2-bedroom, 1-bathroom home offers easy living with city amenities all within walking distance of Heartland Park. This property has a 3-stall attached garage, two over-sized heated stalls with a workbench and a third stall perfect for boats, bikes and lawn mowers. Located just two blocks from Heartland Park, residents can enjoy easy access to outdoor activities and community events. This is a great opportunity for a starter home, downsizing or rental home investor.

**Additional Details:**

|                        |         |
|------------------------|---------|
| Year Built             | 1920    |
| Lot Acres              | 0.16    |
| Lot Dimensions         | 50x140  |
| Garage Stalls          | 3       |
| School District        | 309     |
| Taxes                  | \$1,082 |
| Taxes with Assessments | \$1,082 |
| Tax Year               | 2024    |

**Additional Features:**

**Basement:** Block **Fuel:** Natural Gas **Garage:** 3 **Heat:** Forced Air **Sewer:** City Sewer/Connected **Water:** City Water/Connected **Air Conditioning:** Ductless Mini-Split

**Driving Directions:**

From the intersection of 34 and 71 go east on 34 .4 miles to Mill St. Turn left onto Grove Ave. N. 2 blocks. King St. House is on the corner.



Listed By:  
Dane Arthur Real Estate Agency-Park Rapids

Affinity Real Estate Inc. participates in the Regional Multiple Listing Service of Minnesota, Inc Broker Reciprocity (sm) program, allowing us to display other broker's listings on our website. All properties are subject to prior sale, change or withdrawal.



Call Affinity Real Estate

**218-237-3333**

[info@affinityrealestate.com](mailto:info@affinityrealestate.com)



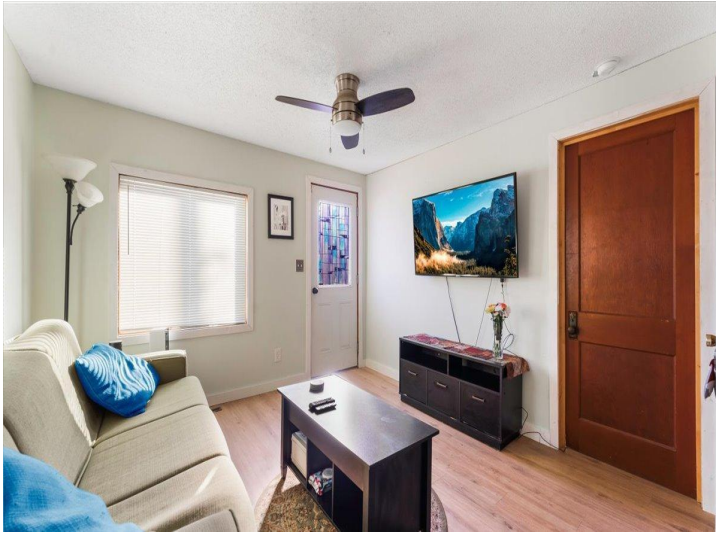
Affinity Real Estate - 600 Park Avenue South - Park Rapids MN 56470



website: [www.AffinityRealEstate.com](http://www.AffinityRealEstate.com) | email: [info@affinityrealestate.com](mailto:info@affinityrealestate.com) | office: 218-237-3333 | fax:218-237-3377



**\$168,500**  
MLS 6679312 Residential  
601 King Street  
Park Rapids MN 56470



website: [www.AffinityRealEstate.com](http://www.AffinityRealEstate.com) | email: [info@affinityrealestate.com](mailto:info@affinityrealestate.com) | office: 218-237-3333 | fax:218-237-3377

**Affinity**  
REAL ESTATE INC

**\$168,500**  
MLS 6679312 Residential  
601 King Street  
Park Rapids MN 56470



website: [www.AffinityRealEstate.com](http://www.AffinityRealEstate.com) | email: [info@affinityrealestate.com](mailto:info@affinityrealestate.com) | office: 218-237-3333 | fax:218-237-3377



**\$168,500**  
MLS 6679312 Residential  
601 King Street  
Park Rapids MN 56470