



MLS 6679313 Lake Home

**\$725,000**

2,640 sq ft  
4 bedrooms  
3 baths

46486 Poss Beach Road  
Pelican Rapids MN 56572

Waterfront: Lizzie Lake

Status: Active

#### Description:

Experience the best of lakeside living on stunning Lake Lizzie! This beautiful 4-bedroom, 3-bathroom home offers 150 feet of pristine lake frontage with breathtaking views throughout. The main level features elegant hardwood floors, a convenient laundry room, two bathrooms, and a welcoming living room centered around a cozy fireplace. The master suite is a private retreat with a jacuzzi tub overlooking the lake, a spacious walk-in closet, and expansive windows showcasing the incredible scenery.

Built for quality and durability, the home includes steel siding, an ICF (Insulated Concrete Form) foundation, and Anderson windows for lasting beauty and energy efficiency. Modern amenities such as an instant water heater, water softener, and geothermal HVAC system ensure year-round comfort, with in-floor heating in both the basement and attached garage.

The walk-out basement is perfect for entertaining, featuring a large family room with a second fireplace, a wet bar, two additional bedrooms, and a full bathroom. Step outside onto the newly built deck to take in the peaceful lake views. A shed near the water provides extra storage, and the property includes a 2-stall attached garage plus an additional 2-stall detached garage—perfect for vehicles and lake toys.

Don't miss this incredible opportunity to enjoy lakefront living at its finest!

#### Additional Details:

Year Built	1997
Lot Acres	0.97
Lot Dimensions	150x290
Garage Stalls	4
School District	548
Taxes	\$4,286
Taxes with Assessments	\$4,286
Tax Year	2024

Listed By:  
Affinity Real Estate Inc. participates in the Regional Multiple Listing Service of Minnesota, Inc Broker Reciprocity (sm) program, allowing us to display other broker's listings on our website. All properties are subject to prior sale, change or withdrawal.



**Call Affinity Real Estate**

**218-237-3333**

**info@affinityrealestate.com**

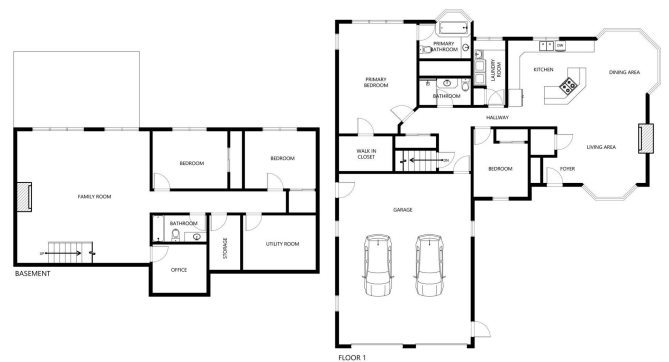


**Affinity Real Estate - 600 Park Avenue South - Park Rapids MN 56470**





46486 Poss Beach Road, Pelican Rapids, MN, USA



SIZE AND DIMENSIONS ARE APPROXIMATE, ACTUAL MAY VARY

website: [www.AffinityRealEstate.com](http://www.AffinityRealEstate.com) | email: [info@affinityrealestate.com](mailto:info@affinityrealestate.com) | office: 218-237-3333 | fax: 218-237-3377

**Affinity**  
REAL ESTATE INC

**\$725,000**  
MLS 6679313 Lake Home  
46486 Poss Beach Road  
Pelican Rapids MN 56572



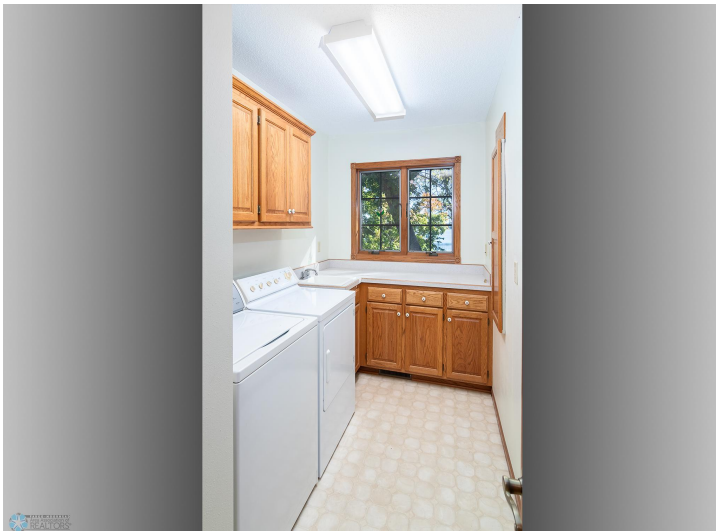


website: [www.AffinityRealEstate.com](http://www.AffinityRealEstate.com) | email: [info@affinityrealestate.com](mailto:info@affinityrealestate.com) | office: 218-237-3333 | fax: 218-237-3377

**Affinity**  
REAL ESTATE INC

**\$725,000**  
MLS 6679313 Lake Home  
46486 Poss Beach Road  
Pelican Rapids MN 56572





website: [www.AffinityRealEstate.com](http://www.AffinityRealEstate.com) | email: [info@affinityrealestate.com](mailto:info@affinityrealestate.com) | office: 218-237-3333 | fax: 218-237-3377

**Affinity**  
REAL ESTATE INC

**\$725,000**  
MLS 6679313 Lake Home  
46486 Poss Beach Road  
Pelican Rapids MN 56572





website: [www.AffinityRealEstate.com](http://www.AffinityRealEstate.com) | email: [info@affinityrealestate.com](mailto:info@affinityrealestate.com) | office: 218-237-3333 | fax: 218-237-3377

**Affinity**  
REAL ESTATE INC

**\$725,000**  
MLS 6679313 Lake Home  
46486 Poss Beach Road  
Pelican Rapids MN 56572





website: [www.AffinityRealEstate.com](http://www.AffinityRealEstate.com) | email: [info@affinityrealestate.com](mailto:info@affinityrealestate.com) | office: 218-237-3333 | fax: 218-237-3377



**\$725,000**  
 MLS 6679313 Lake Home  
 46486 Poss Beach Road  
 Pelican Rapids MN 56572



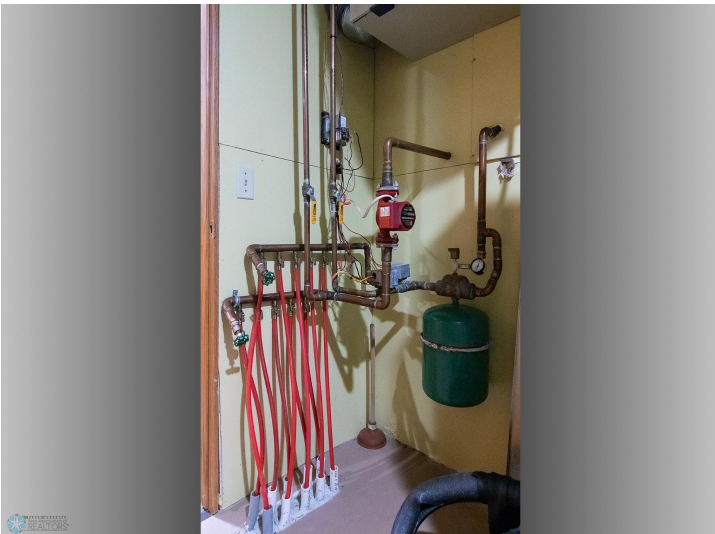


website: [www.AffinityRealEstate.com](http://www.AffinityRealEstate.com) | email: [info@affinityrealestate.com](mailto:info@affinityrealestate.com) | office: 218-237-3333 | fax: 218-237-3377



**\$725,000**  
MLS 6679313 Lake Home  
46486 Poss Beach Road  
Pelican Rapids MN 56572





website: [www.AffinityRealEstate.com](http://www.AffinityRealEstate.com) | email: [info@affinityrealestate.com](mailto:info@affinityrealestate.com) | office: 218-237-3333 | fax: 218-237-3377

**Affinity**  
REAL ESTATE INC

**\$725,000**  
MLS 6679313 Lake Home  
46486 Poss Beach Road  
Pelican Rapids MN 56572





website: [www.AffinityRealEstate.com](http://www.AffinityRealEstate.com) | email: [info@affinityrealestate.com](mailto:info@affinityrealestate.com) | office: 218-237-3333 | fax: 218-237-3377

**Affinity**  
REAL ESTATE INC

**\$725,000**  
MLS 6679313 Lake Home  
46486 Poss Beach Road  
Pelican Rapids MN 56572





website: [www.AffinityRealEstate.com](http://www.AffinityRealEstate.com) | email: [info@affinityrealestate.com](mailto:info@affinityrealestate.com) | office: 218-237-3333 | fax: 218-237-3377

**Affinity**  
REAL ESTATE INC

**\$725,000**  
MLS 6679313 Lake Home  
46486 Poss Beach Road  
Pelican Rapids MN 56572



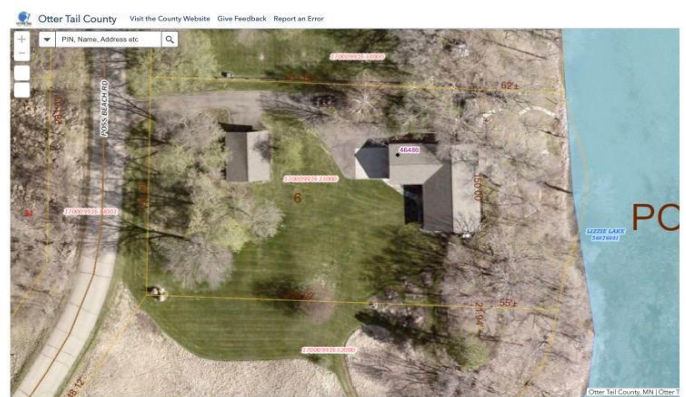


website: [www.AffinityRealEstate.com](http://www.AffinityRealEstate.com) | email: [info@affinityrealestate.com](mailto:info@affinityrealestate.com) | office: 218-237-3333 | fax: 218-237-3377

**Affinity**  
REAL ESTATE INC

**\$725,000**  
MLS 6679313 Lake Home  
46486 Poss Beach Road  
Pelican Rapids MN 56572





website: [www.AffinityRealEstate.com](http://www.AffinityRealEstate.com) | email: [info@affinityrealestate.com](mailto:info@affinityrealestate.com) | office: 218-237-3333 | fax: 218-237-3377

**Affinity**  
REAL ESTATE INC

**\$725,000**  
MLS 6679313 Lake Home  
46486 Poss Beach Road  
Pelican Rapids MN 56572